



Open fields within the park are separated by existing hedgerows of mature trees.



A future path along the gas line will connect the park to the future north/south trail along Collins Creek.



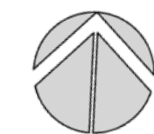
Where possible, vegetation within the park will be preserved.



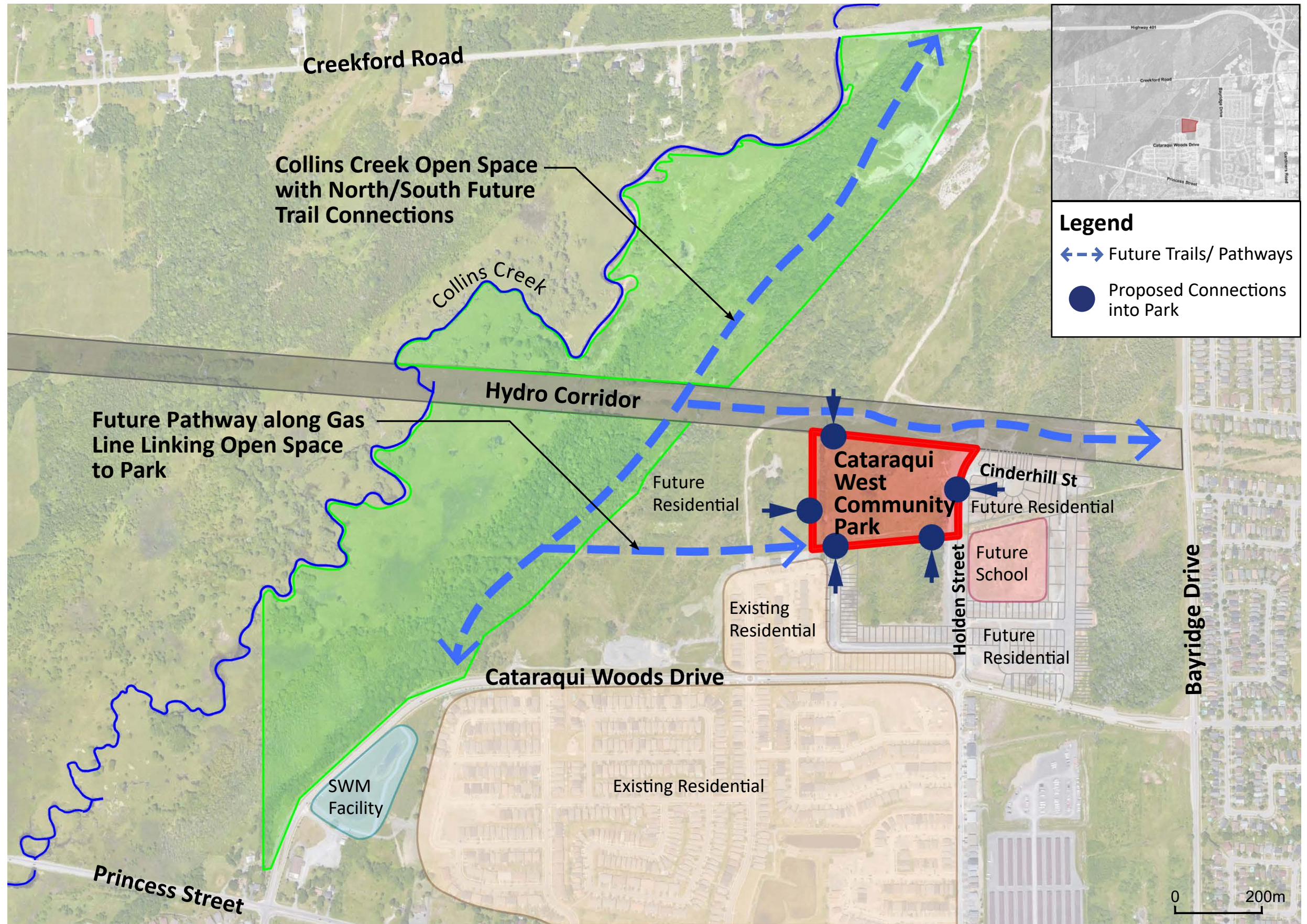
Existing condition of the hydro corridor to the north of the park.



Character of proposed trails in the Collins Creek Open Space. Surfacing to be low impact, compacted granular.



July 2022



City of Kingston

Site Context and Trail Opportunities

the mbtw group





Rectangular Play Field



Softball Diamond



Pickleball Courts



Tennis Courts



Cataraqui West Community Park

City of Kingston

Community Park Concept A



July 2022

the mbtw group





Playground



Splash Pad



Shade Structure



Basketball Court



Cataraqui West Community Park

City of Kingston

Community Park Concept B



July 2022

the mbtw group

