



Rudd Avenue to Serpentine Lane Path Improvements

November 24, 2020

City of Kingston:

Neal Unsworth, Parks Development Manager, Engineering Services

Chanda Sames, Parks and Open Space Coordinator, Engineering Services

Derek Holota, Communications Officer, Communications and Customer Experience

Jen Pinarski, Communications Officer, Communications and Customer Experience

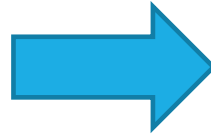
Tara Galpin, Wentworth Landscapes

Danielle Dibbits, Wentworth Landscapes

Rudd – Serpentine pathway improvement project originated as part of the City's Waterfront Master Plan

Initial community consultation

- Postcard surveys at various summer festivals, City facilities and website
- Rural surveys
- User and interest group interviews (25)
- Stakeholder meetings (47)
- Working group meetings (7)



Top community desires:

- #1 Access to nature
- #2 More trails
- #3 Access to the water

Council approved the master plan March 22, 2016.

Master plan vision - 3 Core Mandates: Connections, Access, Enhancement



2014



2015



2016

In depth community consultation

- Local focus area meetings – details on key topics (6) – Eastview subdivision is in Focus Area #6
- Online Chats (6), Open Houses (3)
- Workshops on concepts proposed (6)
- Working group meetings (6)
- Meeting with First Peoples
- Media releases, webpage, social media, posters, letters

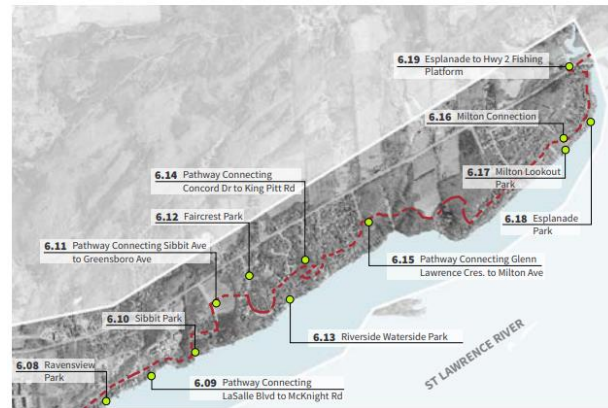
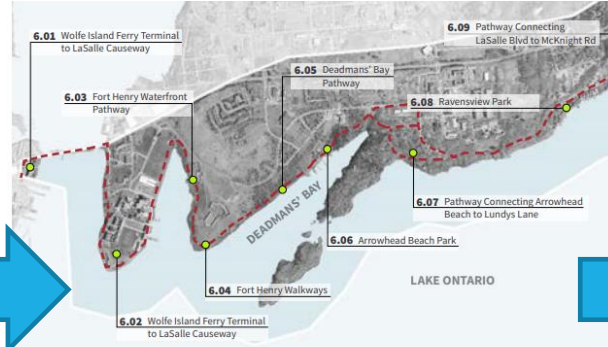
Waterfront Master Plan

Kingston's Waterfront is approximately **280km** long. Study area was divided into **6 focus areas**.



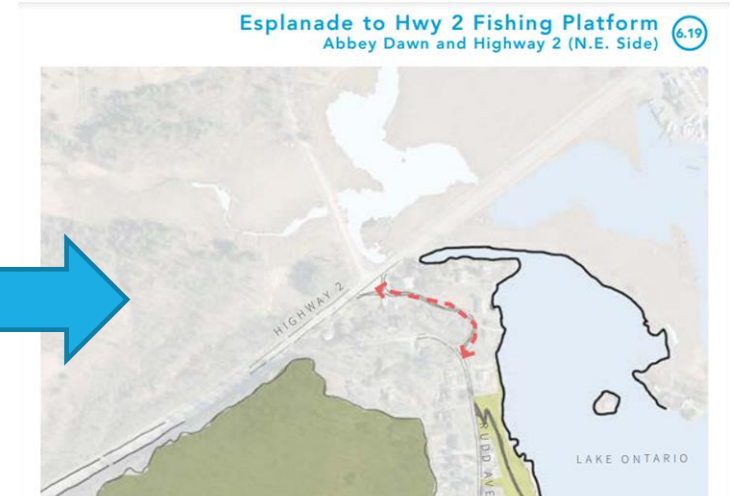
Focus Area 6 study area (St. Lawrence River):

- Public feedback
- Review of opportunities
- May include enhancements, improved waterfront access, a waterfront trail and trail in waterfront communities, picnicking areas and waterfront viewing opportunities



Focus Area 6 projects are based on a plan for a connected system:

- Pathway connections linking existing neighbourhoods are key initiatives of this Focus Area



Description

A pathway would follow an unused roadway allowance to connect from Rudd Ave (Esplanade Park) to Highway 2. Across Highway 2 would be a fishing platform.

Recommended improvements:

- ▷ Signage and wayfinding
- ▷ Fishing platform
- ▷ On or off road parking to be explored

Project Risks and Challenges:

- ▷ Coordination with Engineering (MTO)
- ▷ Coordination with community and stakeholders

Details

size / area
0.05 ha

ownership
City of Kingston

project partners
Adjacent Land-Owners
CRCA

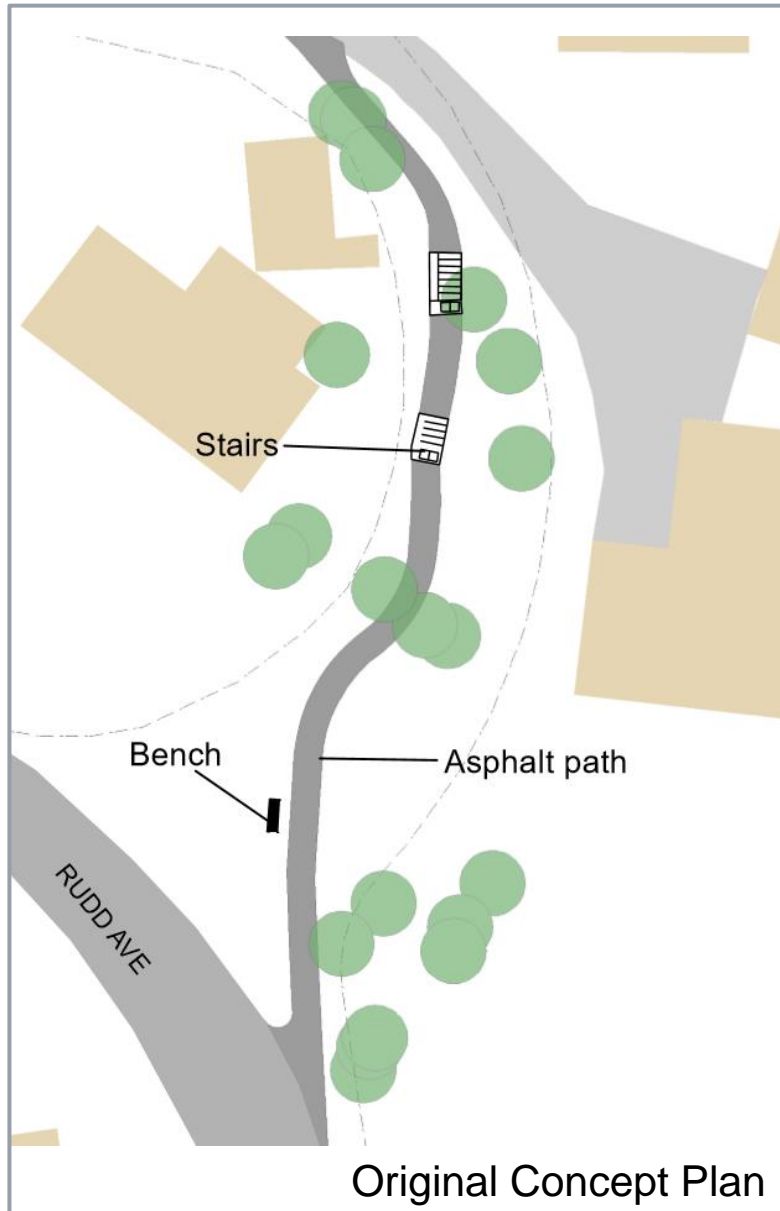
estimated budget
\$ 150,000

priority ranking
62/137

associated initiatives
Stand Alone

Implementation:

New projects were prioritized in the master plan and Rudd – Serpentine was approved in the annual City budget process



Feedback/questions received on project and original concept plan:

- The footpath has been regularly used by residents to go to the school bus, mailboxes, to visit friends and for walks out on to Abbey Dawn Rd. and Highway #2.
- The pathway improvement is much needed and important.
- Kids ride their bicycles on the existing foot path.
- The path connection at the top on the Rudd Avenue corner has limited visibility.
- Steep slope at the bottom of hill currently a challenge to users
- The aesthetic of the space is important (currently natural)
- A better integration of the pathway into the natural space is preferred.
- Less change and disruption to the site is preferred
- Naturalization and habitat for wildlife is important
- Some felt bench was unnecessary
- Concerns over privacy and increased usage by people from outside the neighbourhood
- Pathway is a little close to neighbouring residents.

Current Pathway Design - Changes

Less change of grades and more mature trees to be retained

Narrower path surface

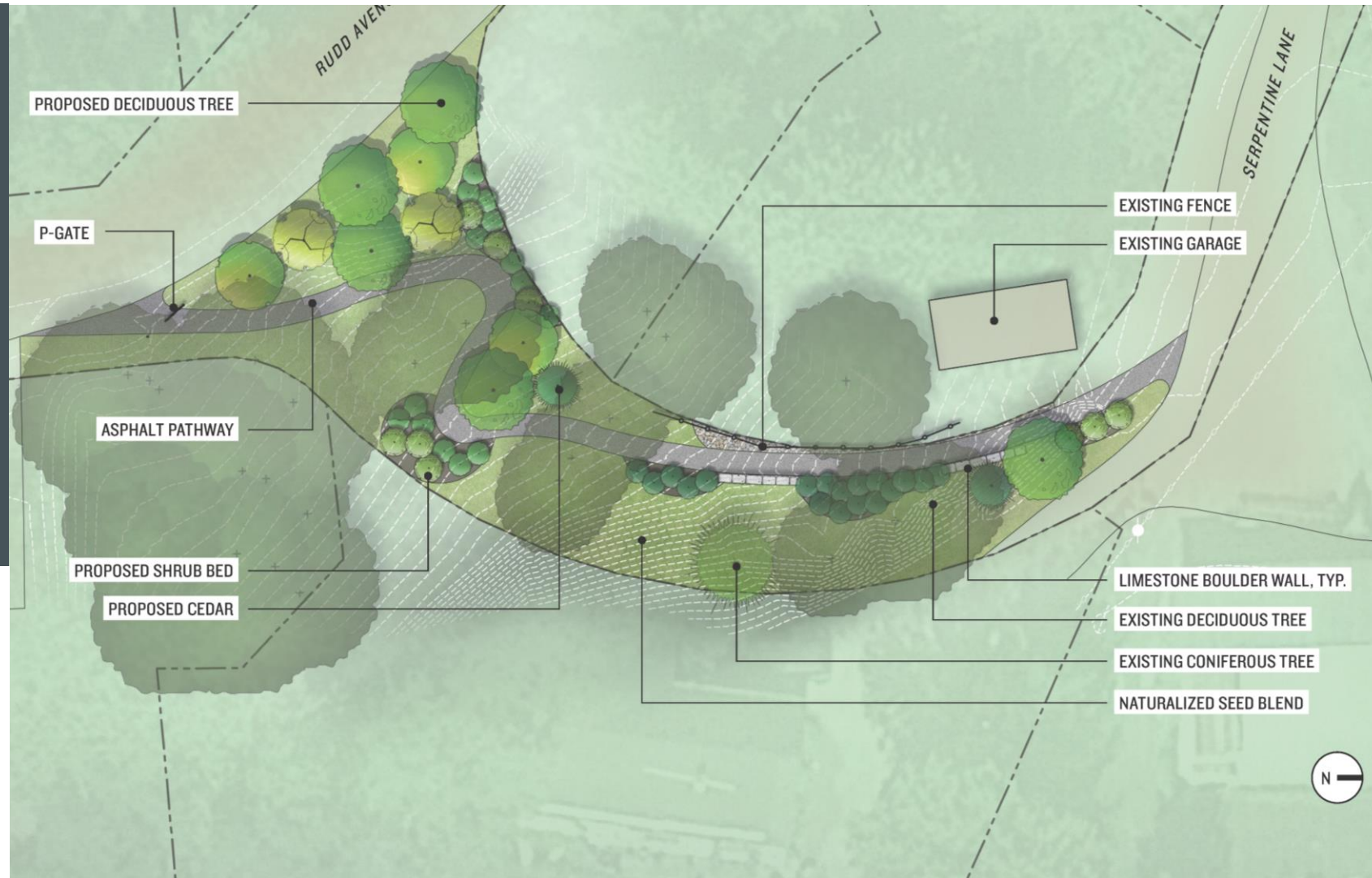
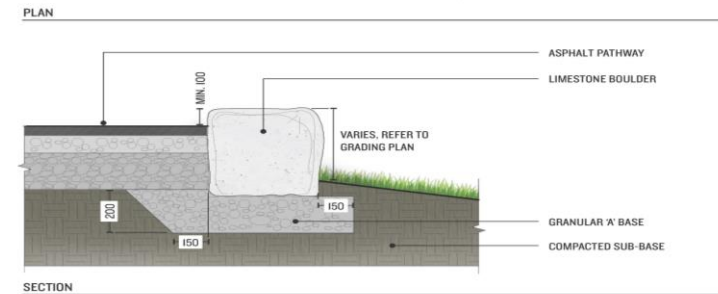
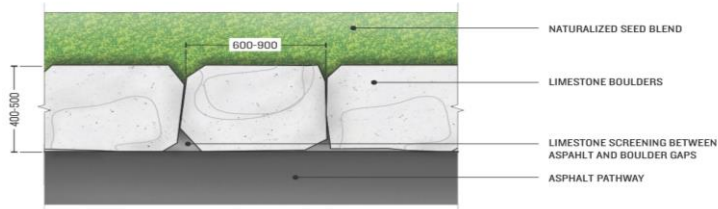
Smaller retaining walls

No stairs or bench

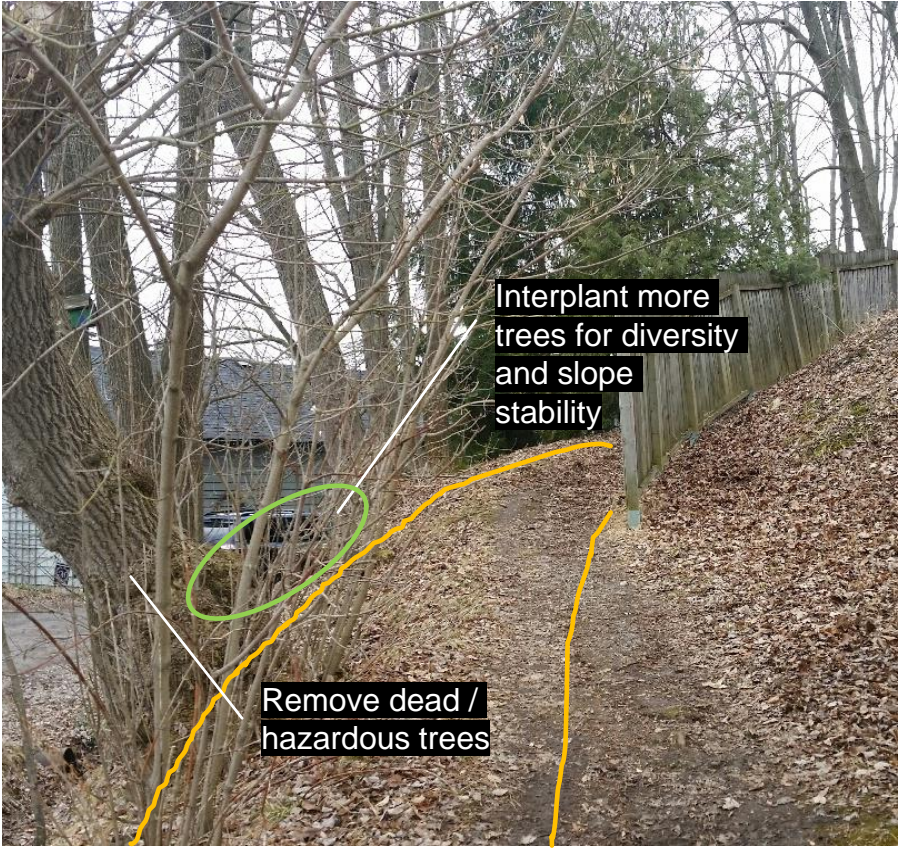
More new trees & woody shrubs added for diversity, habitat and aesthetics

Pedestrian gate added at Rudd Avenue

Ecological assessment underway



SITE PHOTOS





Next Steps:

Finalize design

Complete ecological due diligence – consider seasonal change, construction best practices, etc.

Hire contractor

Construction spring 2021 (2-3 months)



Questions?