



Priority Matrix

appendix C

Priority Matrix

To evaluate each of the projects, a matrix has been developed to help prioritize them. The matrix uses thirty-eight criteria organized under 13 topics which are further organized under five topic groups. These five groups fall into one of two categories:

1. Technical Analysis; and,
2. Public Opinion.

The technical analysis consists of criteria that consider best practices in waterfront planning. These criteria are worth 65% of the total score. The public opinion category considers input provided by the community. It constitutes 35% of the total score.

Each criteria (question) is applied to each of the 138 projects. A score of 1, 3 or 5 is applied to the project depending on how it is assessed against the question/criteria. Based on the total score, each project is weighted out of 100.

The following provides a more detailed description of the criteria groups, weighting and criteria used to assess the projects, followed by the complete matrix and scores applied to each of the 137 projects.

Technical Analysis (65%)

The Technical Analysis consists of twenty five questions derived from best practices in waterfront planning. These questions are organized under three Criteria Groups:

1. Criteria Group #1: City Wide Benefit
2. Criteria Group #2: Alignment with Plan's Mandate

3. Criteria Group #3: Related Opportunities and Constraints

Each criteria group is organized into topics which are further organized into the specific evaluation criteria questions and scoring.

Criteria Group #1: City Wide Benefit – 40%

These criteria address the extent to which projects serve the community as a whole in the areas of walkable access, visitor potential, creating a competitive edge over other cities and improving the City's image to residents and people outside of Kingston.

This group is organized into four topic headings:

1. Residents;
2. Visitors;
3. Competitive Edge; and,
4. City Image.

Residents

Six criteria are used to evaluate each project. These criteria consider a project's benefit to Kingston residents and in regards to proximity to where the majority of people live, work, and recreate during lunch, after work or on weekends. For example projects closer to concentrations of works/high employment areas scored higher, while projects further away received a lower score. Refer to the map on the following page used to assess Criteria 1A and 1B.

Visitors

Two criteria are used to evaluate the impact of a project on visitors to Kingston: Visitor Attraction

Waterfront Master Plan

The map displays the waterfront area with various zones and distances from the waterbody. The zones are color-coded and labeled with numbers: 3 (orange), 4A (green), and 4B (dark green). The map also shows distances from the waterbody: 500 metres (green dashed line), 2 kilometres (purple dashed line), and 2 kilometres from the waterbody (purple dashed line). The map includes a legend for the zones and distances, and a source note at the bottom: Source: Geographic Attribute File, 2011 Census. Statistics Canada Catalogue no. 92-151-X.

Source: Geographic Attribute File, 2011 Census. Statistics Canada Catalogue no. 92-151-X

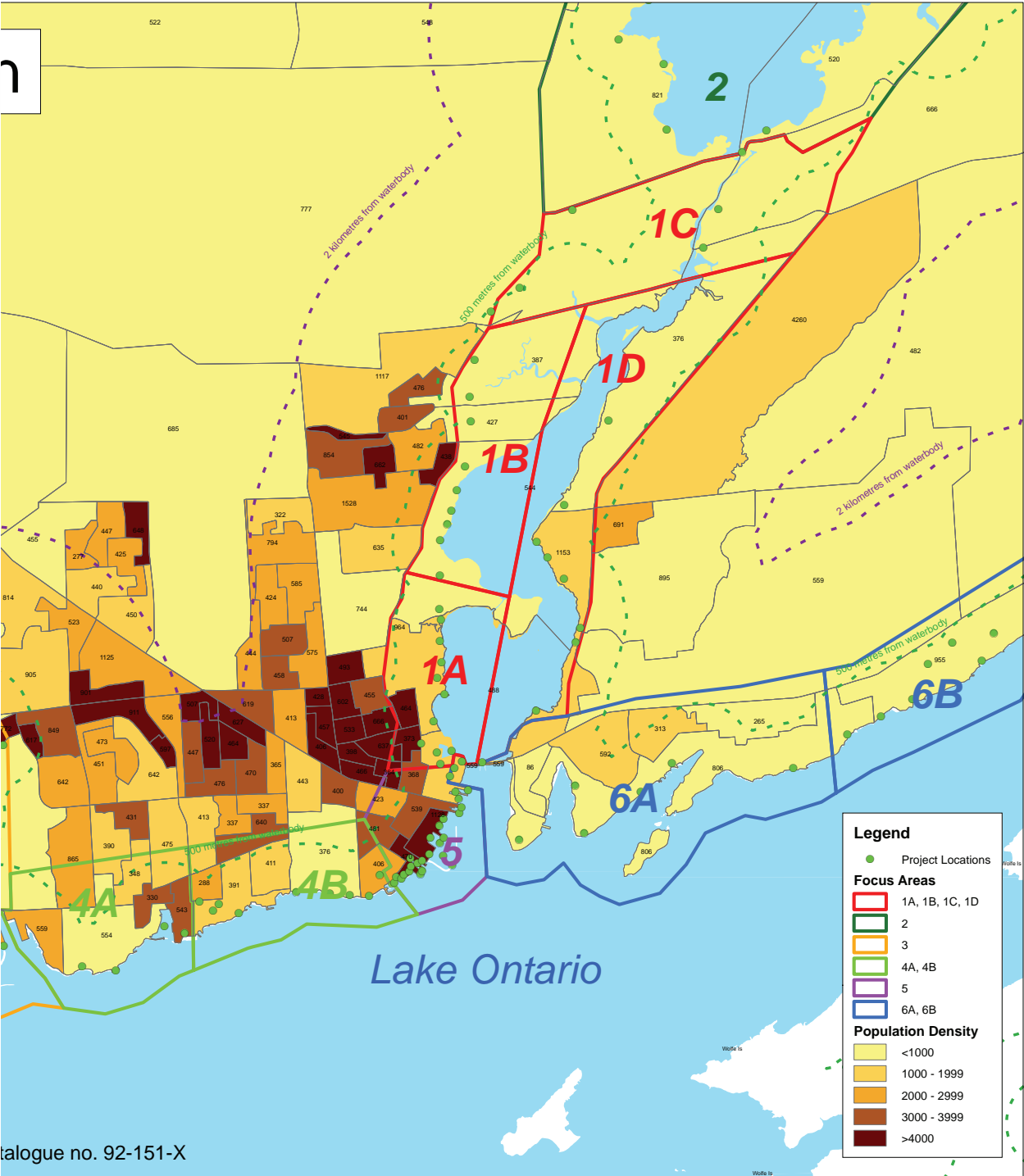


Figure 195: Population Density
Information used to score criteria 1A and 1B.

Criteria Group #1: City Wide Benefit – 40%

Criteria	Question	Scoring
Residents		
1A: Proximity to Population	Is the project located near large population base?	1 - Is over 2 km away 3 - Is within 2 km 5 - Is within or immediately abuts
1B: Proximity to Locations of Dense Population	Is the project located near an area with residents in dense living conditions?	1 - Is over 2 km away 3 - Is within 2 km 5 - Is within or immediately abuts
1C: Proximity to New Growth Areas	Is the project located near areas of medium term (20 years) residential growth?	1 - Is over 2 km away 3 - Is within 2 km 5 - Is within or immediately abuts
1D: Weekday Attraction	Is the project located near existing concentrations of employment and will be a mid day attraction?	1 - Is over 0.5 km away 3 - Is within 0.5 km 5 - Is within or immediately abuts
1E: After Work and Weekend Attraction	To what extent will the project provide or enhance a destination for residents on weekends and after work?	1 - Limited extent 3 - Moderate extent 5 - High extent
1F: Outdoor Physical Activity	To what extent will the project be attractive to residents from a health and fitness perspective? (walking, cycling, jogging, swimming, etc.)	1 - Limited extent 3 - Moderate extent 5 - High extent
Visitors		
1G: Visitor Attraction	To what extent will the project attract visitors and tourists to Kingston? (e.g. hotels, restaurants, events, uniqueness)	1- Limited visitor attraction potential 3 -Potentially a new key visitor attraction 5 - Potentially enhanced attraction of existing visitor destination
1H: Visitor Experience	Will the project enhance visitor waterfront experiences? (e.g., waterfront events, on-water activities, proximity to water's edge, unique environments/experiences, local history/heritage)	1- Does not provide/enhance visitor waterfront experience 3 - Provides/enhances several visitor waterfront experiences 5 - Provides/enhances many visitor waterfront experiences

Criteria	Question	Scoring
Competitive Edge		
1I: Attracting Residents	To what extent will the project attract new residents (permanent and temporary) to Kingston?	1 - Limited extent 3 - Moderate extent 5 - High extent
1J: Retaining Residents	To what extent will the project serve to retain residents in Kingston? (by increasing their waterfront experience, improved lifestyle, etc.)	1 - Limited extent 3 - Moderate extent 5 - High extent
City Image		
1K: City Image (outside)	To what extent will the project enhance and build image and impression for those outside of the City of Kingston?	1 - Limited extent 3 - Moderate extent 5 - High extent
1L: City Image (inside)	To what extent will the project enhance Kingston's image and pride within the City?	1 - Limited extent 3 - Moderate extent 5 - High extent

*Table 48: Criteria Group #1 – City Wide Benefit
Criteria, Questions and Scoring*

and Visitor Experience. These consider a project's benefit in attracting visitors and tourists to Kingston and consider the extent to which the project will enhance their waterfront experience.

Competitive Edge

Two criteria are used to score a project's ability to give Kingston a competitive edge over other communities by looking at the project's ability to attract new residents and the project's ability to retain residents. Projects which were believed to give Kingston a competitive edge were award higher scores.

City Image

Two criteria are used to score a project's affect on the City's image to Kingston's residents as well as to those outside of Kingston. Projects that would likely have minimal impact on the City's image were awarded lower scores than those that would enhance Kingston's image.

Criteria Group #2: Alignment with Plan's Mandate – 15%

These criteria address the extent to which projects further the triple mandate of the Master Plan, which is to achieve connectivity (full along the urban waterfront and nodal in rural areas), enhance overall access to waterfront, and enhance existing waterfront spaces.

This group is organized into three topic headings:

1. Connectivity;
2. Access; and,
3. Enhancements.

Connectivity

Two criteria are used to evaluate a project's ability to address achieving connectivity along the waterfront. Projects with minimal connective potential were awarded lower scores than projects that would extend or improve a connection.

Access

Three criteria are used to evaluate a project's ability to address improving access to the waterfront. Projects that would not result in improved access were given a score of 1 while projects that would improve access were awarded a score of 5.

Enhancements

Three criteria are used to evaluate how important enhancements are to addressing the anticipated level of use, user needs and aging infrastructure. Projects which will benefit greatly from enhancements were awarded higher scores than those that would see less of a benefit from improvements.

Criteria Group #3: Related Opportunities and Constraints – 10%

These criteria incorporate other factors that will influence the potential to implement projects in the short or long-term.

This group is organized into three topic headings:

1. Implementation Constraints;
2. Dependences; and,
3. Financial Opportunity.

Implementation Constraints

Two criteria are used to evaluate the ease of implementing the project given the need for partnerships and/or approvals. Projects which have few or no partners were scored higher. Similarly, projects requiring minimal approvals were awarded higher scores.

Dependences

Two criteria have been used to assess the impact of any inter-relationship between projects. A higher score was applied to projects that would see a benefit from being implemented in conjunction with other planned or anticipated capital works. Similarly, projects that are stand alone and not impacted by other projects were given higher scores, while projects that are reliant on one or more other projects to be implemented were assigned lower scores.

Financial Opportunity

Projects were evaluated based on their potential for being financed through non-tax revenue sources. Those which could be partially or fully funding through alternative sources of funding were assigned a higher score.

Criteria Group #2: Alignment with Plan's Mandate – 15%

Criteria	Question	Scoring
Connectivity		
2A: Existing Connectivity	To what extent does the project improve an existing connection?	1 - Is not a connector 3 - Enhances an existing connection, but does not extend 5 - Extends an existing connection
2B: Proposed Connectivity	To what extent does the project provide a new connection?	1 - Is not a connector 3 - Enhances an existing connection, but does not extend 5 - Extends an existing connection
Access		
2C: Improved Access	Will the project provide improved access to waterfront places/spaces where there is no or poor access?	1 - No 5 - Yes
2D: Attractiveness	Will improved access generate/stimulate use through greater awareness, positive perception, increased attractiveness?	1 - No 5 - Yes
2E: Universal Accessibility	To what extent will the project improve universal accessibility (AODA, FADS, inclusive design)?	1 - No 5 - Yes
Enhancements		
2F: Expected Level of Use	Will enhancements be expected to receive heavy use?	1 - No 3 - Maybe 5 - Yes
2G: Expected Impact	How critical is the enhancement to the potential function and use of the space? (to what degree will the improvement impact the function of the space)	1 - Currently not required; site already functions and meets current user needs 3 - Would be nice 5 - Critical need to enhance to function properly
2H: Aging Infrastructure	Will the project include upgrades to/ replacement of aging infrastructure that presents operational, safety or environmental concerns?	1 - No 3 - Yes 5 - Urgent

Table 49: Criteria Group #2 – Alignment with Plan's Mandate
Criteria, Questions and Scoring

Criteria Group #3: Related Opportunities & Constraints – 10%

Criteria	Question	Scoring
Implementation Constraints		
3A: Partnerships	Ease of partnerships in achieving land access?	1 -Dependent on partners not expected to participate soon. 3 - Participation between partners expected 5 - Primarily City Controlled
3B: Approvals	How extensive will the approvals process for implementation be?	1 - Extensive approvals required 3 - May have some challenges 5 - Minor
Dependences		
3C: Efficiencies	Will the project be triggered and efficiencies gained by other capital works?	1 -No 5 - Yes
3D: Linked Projects	Can the project proceed without the initiation or completion of other projects?	1 - Contingent on initiation of multiple other projects 3 - Contingent on completion of one other project 5 - Stands alone
Financial Opportunity		
3E: Financing	Will the project be financed through non-tax revenues?	1 - No non-tax revenues available 3 - Partially financed through non-tax revenues 5 - Fully financed through non-tax revenues

*Table 50: Criteria Group #3 – Related Opportunities and Constraints
Criteria, Questions and Scoring*

Public Opinion (35%)

The evaluation of projects based on public input consists of thirteen tests derived from the various sources of public input received during the waterfront master plan consultation process. These thirteen questions or tests are organized under two Criteria Groups:

1. Criteria Group #4: Community Preference
2. Criteria Group #5: Community Generated Themes

Each criteria group is organized into topics which are further organized into the specific evaluation criteria questions and scoring.

Criteria Group #4: Community Preference – 17.5%

This criterion incorporates the community's priority assignment to the projects presented at the June 24, 2015 Open House. Points applied are proportional based on a top score of 80 dots. Therefore the project's score increases according to its level of public favour.

Criteria Group #5: Community Generated Themes – 17.5%

These criteria address the extent to which projects reflect the dominant themes that emerged in public consultation activities (documented from Focus Area sessions, on comment sheets and on-line chats).

This group is organized into two topic headings:

1. Post Card Generated Themes; and,
2. Other Popular Themes.

Post Card Generated Themes

Criteria used are based on the most common responses to the post card survey.

Other Popular Themes

Criteria used are based on the themes from the public consultation activities including the public workshops for each focus areas, comment sheets, and on-line chat session.

Criteria Groups #4: Community Preference – 17.5%

Criteria	Question	Scoring
3A: Partnerships	What was the priority assigned to the project by the community (June 24th Open House)?	Group weight (17.5%) x project's score / Top Score (80)

Table 51: Criteria Group #4 – Community Preference
Criteria, Question and Scoring

Criteria Groups #5: Community Generated Themes – 17.5%

Criteria	Question	Scoring
Post Card Generated Themes		
5A: Access to Nature	Does the project respond to the community's desire for access to nature?	1 -No 5 - Yes
5B: More Trails	Does the project respond to the community's desire for more trails?	1 -No 5 - Yes
5C: Places to Relax	Does the project respond to the community's desire for more or improved places to relax?	1 -No 5 - Yes
5D: Access to Swimming	Does the project respond to the community's desire for access to swimming?	1 -No 5 - Yes
5E: Connections Along the Water	Does the project respond to the community's desire for connections along the water?	1 -No 5 - Yes
Other Popular Themes		
5F: Improved Land Access	Does the project improve access to land-based activities?	1 - No change 5 - Improves/provides access to land-based activities
5G: Improved Water Access	Does the project improve access to water-based activities?	1 - No change 5 - Improves/provides access to water-based activities
5H: Variety of Interests	Does the project accommodate a variety of interests (physical, cultural and social)?	1 - Intends to accommodate physical or cultural or social activity/interests 3 - Intends to accommodate two of the three types of activities /interests 5 - Intends to accommodate all three (physical, cultural, and social activity/interests)

*Table 52: Criteria Group #5 – Community Generate Themes
Criteria, Question and Scoring*

Criteria	Question	Scoring
5I: Variety of Users	To what extent will the project accommodate a variety of users?	1 - Accommodates a single type of user/ user group (e.g., power boaters) 3 - Accommodates a number of different users/use groups (e.g., several age groups) 5 - Accommodates wide variety of users/ user groups (e.g., different age groups, singles, families, clubs, walkers, cyclists, etc.)
5J: Environmental Stewardship	To what extent does the project steward the natural environment and/or ecosystems?	1 - Limited natural environment improvement 3 - Restores deteriorated natural environment/ecosystems 5 - Restores and enhances natural environment/ecosystems
5K: All Season	To what extent will the project facilitate/encourage multi-season use of the waterfront?	1 - Limited to single season use/activity 3 - Facilitates/encourages 2 or 3 season use/activity 5 - Facilitates/encourages year-round use/ activity
5L: Built Heritage	Will the project showcase/complement the City's built heritage?	1 – No 3 – Somewhat 5 - Yes

Table 53: Criteria Group #5 – Community Generate Themes (continued)
Criteria, Question and Scoring

Matrix Scoring

The following tables outline the scores applied to each project based on the preceding criteria, questions and scoring. The scoring tables are organized by Focus Area.

Priority Matrix Scoring: Focus Area #1

		Residents	
		1A	1B
		Proximity to Population	Proximity to Locations of Dense Population
		Score	Score
#	Project Name		
1.01	LaSalle Causeway - enhanced pedestrian access / crossing	5	5
1.02	Create Connection from causeway to Anglin Lot (@ DND Lands)	5	5
1.03	Sidewalk from LaSalle Causeway to King St.	5	5
1.04	Enhanced Connection from Armes Square to Anglin Bay	5	5
1.05	Anglin Parking Lot Connection (buffered pedestrian route - shore edge)	5	5
1.06	Wellington Street Sidewalk (both sides Bay Street to DFP)	5	5
1.07	Anglin Bay Bridge (From Frontenac Village to Douglas R. Fluhrer Park)	5	5
1.08	Douglas R. Fluhrer Park	5	5
1.09	Molly Brant Park (From north end of DFP to Molly Brant Point)	5	5
1.10	Emma Martin Park	5	5
1.11	Public Works Lands Connection Lookout (by River St. Pumping Station)	5	5
1.12	Tannery Lands (River Edge)	5	5
1.13	Land Bridge connection from Tannery to Belle Park	5	5
1.14	Belle Park Pathway Improvements (periphery)	3	5
1.15	Belle Park Lookout	3	5
1.16	Village Apartments Pathway Improvements (waterside path)	3	5
1.17	Third Crossing Landscape Improvements (at future bridge abutments)	3	5
1.18	Newmarket Lane Pathway Improvements (connect to outer station lookout)	3	5
1.19	Railway Underpass Pathway Connection	3	5
1.20	Create Connection (East of Montreal) from Underpass to Greer (below escarpment)	3	5
1.21	On Street Connection from Greer to Sutherland Dr. Park	3	5
1.22	Sutherland Drive Park	3	5
1.23	Pathway Connecting Sutherland Dr. Park to Highway 401 Crossing	3	5
1.24	West 401 Crossing (at Montreal Street)	1	1
1.25	Carpool Lot to Battersea South Pathway (Montreal / 401)	1	1
1.26	On Road link via Kingston Mills Rd. to Locks	1	1
1.27	Kingston Mills Locks Improvements	1	1
1.28	Pathway connection south of Kingston Mills Road to 401 (East side canal)	1	1
1.29	East 401 Crossing	1	1
1.30	Pathway Connections south of 401 (east side to quarry)	1	1
1.31	MacLean Trails Park	3	3
1.32	Lilla Burke Park	3	3
1.33	Former Rideau Marina Redevelopment	3	3
1.34	100 Foot Park	3	3
1.35	Highway 15 Onroad Link from 100 Foot Park to Craftsman Blvd	3	3
1.36	Highway 15 Roadside Lookout (north of Barriefield) on west side @Craftsman	3	3
1.37	Green Bay Open Space (North of James St. at point)	3	3

Residents				Visitors	
1C	1D	1E	1F	1G	1H
Proximity to New Growth Areas	Weekday Attraction	After Work and Weekend Attraction	Outdoor Physical Activity	Visitor Attraction	Visitor Experience
Score	Score	Score	Score	Score	Score
3	5	1	1	1	1
3	5	3	3	1	1
3	5	1	1	1	1
3	5	1	1	1	1
3	5	1	1	1	1
3	5	1	1	1	1
3	5	3	5	1	3
3	5	5	5	3	5
3	5	5	5	3	3
3	5	3	5	1	3
3	5	1	1	1	1
3	5	5	5	3	5
3	5	3	3	1	3
3	1	5	5	3	3
3	1	3	3	3	3
3	1	1	1	1	1
3	1	1	3	1	3
3	1	1	1	1	1
3	1	1	1	1	1
3	1	1	1	1	1
3	1	1	1	1	1
3	1	1	3	1	1
3	1	1	1	1	1
3	1	1	1	1	1
3	1	1	1	1	1
3	1	1	1	1	1
3	1	3	1	3	5
3	1	3	3	1	3
3	1	1	1	1	3
3	1	5	5	1	1
5	3	3	5	3	3
5	3	3	1	1	3
5	3	1	1	1	3
5	3	1	1	1	1
5	3	1	1	1	1
5	3	1	1	1	1
5	3	1	1	1	1
5	3	1	1	1	1

Table 54: Focus Area #1 Priority Matrix
Criteria 1A to 1H

Priority Matrix Scoring: Focus Area #1

		Competitive Edge	
		1I	1J
		Attracting Residents	Retaining Residents
		Score	Score
#	Project Name		
1.01	LaSalle Causeway - enhanced pedestrian access / crossing	1	1
1.02	Create Connection from causeway to Anglin Lot (@ DND Lands)	1	1
1.03	Sidewalk from LaSalle Causeway to King St.	1	1
1.04	Enhanced Connection from Armes Square to Anglin Bay	1	1
1.05	Anglin Parking Lot Connection (buffered pedestrian route - shore edge)	1	1
1.06	Wellington Street Sidewalk (both sides Bay Street to DFP)	1	1
1.07	Anglin Bay Bridge (From Frontenac Village to Douglas R. Fluhrer Park)	1	1
1.08	Douglas R. Fluhrer Park	3	5
1.09	Molly Brant Park (From north end of DFP to Molly Brant Point)	1	3
1.10	Emma Martin Park	1	1
1.11	Public Works Lands Connection Lookout (by River St. Pumping Station)	1	1
1.12	Tannery Lands (River Edge)	3	3
1.13	Land Bridge connection from Tannery to Belle Park	1	1
1.14	Belle Park Pathway Improvements (periphery)	3	3
1.15	Belle Park Lookout	1	1
1.16	Village Apartments Pathway Improvements (waterside path)	1	1
1.17	Third Crossing Landscape Improvements (at future bridge abutments)	1	1
1.18	Newmarket Lane Pathway Improvements (connect to outer station lookout)	1	1
1.19	Railway Underpass Pathway Connection	1	1
1.20	Create Connection (East of Montreal) from Underpass to Greer (below escarpment)	1	1
1.21	On Street Connection from Greer to Sutherland Dr. Park	1	1
1.22	Sutherland Drive Park	1	1
1.23	Pathway Connecting Sutherland Dr. Park to Highway 401 Crossing	1	1
1.24	West 401 Crossing (at Montreal Street)	1	1
1.25	Carpool Lot to Battersea South Pathway (Montreal / 401)	1	1
1.26	On Road link via Kingston Mills Rd. to Locks	1	1
1.27	Kingston Mills Locks Improvements	3	3
1.28	Pathway connection south of Kingston Mills Road to 401 (East side canal)	3	3
1.29	East 401 Crossing	1	1
1.30	Pathway Connections south of 401 (east side to quarry)	3	5
1.31	MacLean Trails Park	3	3
1.32	Lilla Burke Park	1	1
1.33	Former Rideau Marina Redevelopment	3	3
1.34	100 Foot Park	1	1
1.35	Highway 15 Onroad Link from 100 Foot Park to Craftsman Blvd	1	1
1.36	Highway 15 Roadside Lookout (north of Barriefield) on west side @Craftsman	1	1
1.37	Green Bay Open Space (North of James St. at point)	1	1

City Image		Connectivity			Access	
1K	1L	2A	2B	2C		
City Image (outside)	City Image (inside)	Existing Connectivity	Proposed Connectivity	Improved Access		
Score	Score	Total Score (out of 60)	%	Criteria Group #1: City Wide Benefit	Score	Score
3	3	30	55%	21.82	3	0
1	1	30	55%	21.82	0	3
1	1	26	47%	18.91	3	0
1	1	26	47%	18.91	3	0
1	1	26	47%	18.91	3	0
1	1	26	47%	18.91	3	0
1	1	26	47%	18.91	3	0
1	1	34	62%	24.73	5	5
3	3	50	91%	36.36	3	3
3	3	44	80%	32.00	3	3
1	3	36	65%	26.18	3	0
1	1	26	47%	18.91	3	0
3	3	48	87%	34.91	5	3
1	1	32	58%	23.27	5	5
3	3	40	73%	29.09	3	3
1	3	30	55%	21.82	1	1
1	1	20	36%	14.55	3	5
1	3	26	47%	18.91	5	5
1	1	20	36%	14.55	5	3
1	1	20	36%	14.55	5	3
1	1	20	36%	14.55	5	3
1	1	20	36%	14.55	3	0
1	1	22	40%	16.00	3	0
1	1	20	36%	14.55	5	3
1	1	14	25%	10.18	5	3
1	1	14	25%	10.18	5	3
1	1	14	25%	10.18	3	3
1	1	14	25%	10.18	3	3
3	3	30	55%	21.82	3	3
3	3	28	51%	20.36	5	5
1	1	16	29%	11.64	5	3
3	3	32	58%	23.27	5	5
1	1	36	65%	26.18	3	3
1	1	26	47%	18.91	1	1
3	1	30	55%	21.82	1	3
1	1	22	40%	16.00	3	1
3	3	26	47%	18.91	3	1
3	3	26	47%	18.91	1	1
1	1	22	40%	16.00	3	3

Table 55: Focus Area #1 Priority Matrix
Criteria 1I to 2C

Priority Matrix Scoring: Focus Area #1

		Access	
		2D	2E
		Universal	
		Attractiveness	Accessibility
		Score	Score
#	Project Name		
1.01	LaSalle Causeway - enhanced pedestrian access / crossing	5	1
1.02	Create Connection from causeway to Anglin Lot (@ DND Lands)	1	1
1.03	Sidewalk from LaSalle Causeway to King St.	1	1
1.04	Enhanced Connection from Armes Square to Anglin Bay	1	1
1.05	Anglin Parking Lot Connection (buffered pedestrian route - shore edge)	1	1
1.06	Wellington Street Sidewalk (both sides Bay Street to DFP)	5	3
1.07	Anglin Bay Bridge (From Frontenac Village to Douglas R. Fluhrer Park)	5	3
1.08	Douglas R. Fluhrer Park	5	5
1.09	Molly Brant Park (From north end of DFP to Molly Brant Point)	5	5
1.10	Emma Martin Park	5	5
1.11	Public Works Lands Connection Lookout (by River St. Pumping Station)	1	1
1.12	Tannery Lands (River Edge)	5	5
1.13	Land Bridge connection from Tannery to Belle Park	5	5
1.14	Belle Park Pathway Improvements (periphery)	5	3
1.15	Belle Park Lookout	5	3
1.16	Village Apartments Pathway Improvements (waterside path)	5	3
1.17	Third Crossing Landscape Improvements (at future bridge abutments)	5	3
1.18	Newmarket Lane Pathway Improvements (connect to outer station lookout)	5	3
1.19	Railway Underpass Pathway Connection	5	3
1.20	Create Connection (East of Montreal) from Underpass to Greer (below escarpment)	5	3
1.21	On Street Connection from Greer to Sutherland Dr. Park	5	1
1.22	Sutherland Drive Park	5	3
1.23	Pathway Connecting Sutherland Dr. Park to Highway 401 Crossing	5	3
1.24	West 401 Crossing (at Montreal Street)	5	3
1.25	Carpool Lot to Battersea South Pathway (Montreal / 401)	5	3
1.26	On Road link via Kingston Mills Rd. to Locks	5	3
1.27	Kingston Mills Locks Improvements	5	3
1.28	Pathway connection south of Kingston Mills Road to 401 (East side canal)	5	1
1.29	East 401 Crossing	5	1
1.30	Pathway Connections south of 401 (east side to quarry)	5	1
1.31	MacLean Trails Park	5	1
1.32	Lilla Burke Park	5	1
1.33	Former Rideau Marina Redevelopment	5	3
1.34	100 Foot Park	5	3
1.35	Highway 15 Onroad Link from 100 Foot Park to Craftsman Blvd	5	3
1.36	Highway 15 Roadside Lookout (north of Barriefield) on west side @Craftsman	5	3
1.37	Green Bay Open Space (North of James St. at point)	5	3

Enhancements			Implementation Constraints	
2F	2G	2H	3A	3B

Expected Level of Use	Expected Impact	Aging Infrastructure	Partnerships	Approvals
Score	Score	Score	Score	Score
Total Score (out of 40)				
21	3	3	3	3
19	3	3	3	3
15	5	5	5	5
9	5	5	5	5
13	5	3	5	3
21	5	5	5	5
26	3	3	3	3
30	5	5	5	5
24	5	5	5	5
21	5	5	5	5
9	5	5	5	5
36	3	3	3	3
34	3	3	3	3
24	5	5	5	5
24	5	5	5	5
20	3	5	3	5
30	5	5	5	5
28	5	5	5	5
30	3	3	3	3
28	5	3	5	3
13	5	5	5	5
15	5	5	5	5
26	3	3	3	3
28	3	3	3	3
28	3	3	3	3
18	3	3	3	3
22	3	3	3	3
32	1	1	1	1
28	3	3	3	3
32	1	1	1	1
16	5	5	5	5
12	5	5	5	5
26	3	5	5	5
16	5	5	5	5
20	3	3	3	3
18	3	3	3	3
26	5	3	5	3

Table 56: Focus Area #1 Priority Matrix
Criteria 2D to 3B

Priority Matrix Scoring: Focus Area #1

Dependencies	
3C	3D

Efficiencies Linked Projects

#	Project Name	Score	Score
1.01	LaSalle Causeway - enhanced pedestrian access / crossing	1	5
1.02	Create Connection from causeway to Anglin Lot (@ DND Lands)	1	3
1.03	Sidewalk from LaSalle Causeway to King St.	1	5
1.04	Enhanced Connection from Armes Square to Anglin Bay	1	5
1.05	Anglin Parking Lot Connection (buffered pedestrian route - shore edge)	1	3
1.06	Wellington Street Sidewalk (both sides Bay Street to DFP)	1	5
1.07	Anglin Bay Bridge (From Frontenac Village to Douglas R. Fluhrer Park)	1	1
1.08	Douglas R. Fluhrer Park	1	5
1.09	Molly Brant Park (From north end of DFP to Molly Brant Point)	1	5
1.10	Emma Martin Park	1	5
1.11	Public Works Lands Connection Lookout (by River St. Pumping Station)	1	5
1.12	Tannery Lands (River Edge)	1	1
1.13	Land Bridge connection from Tannery to Belle Park	1	1
1.14	Belle Park Pathway Improvements (periphery)	1	5
1.15	Belle Park Lookout	1	5
1.16	Village Apartments Pathway Improvements (waterside path)	1	5
1.17	Third Crossing Landscape Improvements (at future bridge abutments)	1	3
1.18	Newmarket Lane Pathway Improvements (connect to outer station lookout)	1	1
1.19	Railway Underpass Pathway Connection	1	1
1.20	Create Connection (East of Montreal) from Underpass to Greer (below escarpment)	1	1
1.21	On Street Connection from Greer to Sutherland Dr. Park	1	1
1.22	Sutherland Drive Park	1	5
1.23	Pathway Connecting Sutherland Dr. Park to Highway 401 Crossing	1	1
1.24	West 401 Crossing (at Montreal Street)	1	1
1.25	Carpool Lot to Battersea South Pathway (Montreal / 401)	1	1
1.26	On Road link via Kingston Mills Rd. to Locks	1	1
1.27	Kingston Mills Locks Improvements	1	5
1.28	Pathway connection south of Kingston Mills Road to 401 (East side canal)	1	1
1.29	East 401 Crossing	1	1
1.30	Pathway Connections south of 401 (east side to quarry)	1	1
1.31	MacLean Trails Park	1	5
1.32	Lilla Burke Park	1	5
1.33	Former Rideau Marina Redevelopment	1	3
1.34	100 Foot Park	1	5
1.35	Highway 15 Onroad Link from 100 Foot Park to Craftsman Blvd	1	5
1.36	Highway 15 Roadside Lookout (north of Barriefield) on west side @Craftsman	1	3
1.37	Green Bay Open Space (North of James St. at point)	1	5

Financial Opportunity			Public Input		Post Card Themes
3E			4A		5A
Financing			Public Support		Access to Nature
Score	Total Score (out of 25)	Best Practices Total Score (out of 65)	Total # of Dots	Group #4: Community Preference (out of 25)	Score
1	13	34.89	16	4	1
1	11	33.34	13	3	1
1	17	31.33	18	4	1
1	17	29.08	8	2	1
1	13	28.98	3	1	1
1	17	33.58	17	4	1
1	9	38.08	4	1	1
1	17	54.41	32	7	5
1	17	47.80	14	3	5
1	17	40.86	14	3	5
1	17	29.08	10	2	1
1	9	52.01	21	5	5
1	9	39.62	20	4	5
1	17	44.89	22	5	5
1	17	37.62	13	3	1
1	15	28.05	6	1	1
1	15	36.16	22	5	1
1	13	30.25	5	1	5
1	9	29.40	0	0	5
1	11	29.45	2	0	5
1	13	24.62	0	0	1
1	17	28.43	0	0	1
1	9	27.90	8	2	1
1	9	24.28	1	0	1
1	9	24.28	2	0	1
1	9	20.53	2	0	1
1	13	35.27	7	2	1
1	5	34.36	12	3	5
1	9	25.74	4	1	1
1	5	37.27	12	3	5
1	17	38.98	13	3	5
1	17	30.21	3	1	1
1	13	36.77	0	0	1
1	17	28.80	3	1	5
1	13	31.61	6	1	1
1	11	30.06	2	0	1
1	15	31.75	7	2	1

Table 57: Focus Area #1 Priority Matrix
Criteria 3C to 5A

Priority Matrix Scoring: Focus Area #1

Post Card Generated	
5B	5C

More Trails Places to Relax

#	Project Name	Score	Score
1.01	LaSalle Causeway - enhanced pedestrian access / crossing	1	1
1.02	Create Connection from causeway to Anglin Lot (@ DND Lands)	5	1
1.03	Sidewalk from LaSalle Causeway to King St.	1	1
1.04	Enhanced Connection from Armes Square to Anglin Bay	1	1
1.05	Anglin Parking Lot Connection (buffered pedestrian route - shore edge)	1	1
1.06	Wellington Street Sidewalk (both sides Bay Street to DFP)	1	1
1.07	Anglin Bay Bridge (From Frontenac Village to Douglas R. Fluhrer Park)	5	1
1.08	Douglas R. Fluhrer Park	5	5
1.09	Molly Brant Park (From north end of DFP to Molly Brant Point)	5	5
1.10	Emma Martin Park	1	5
1.11	Public Works Lands Connection Lookout (by River St. Pumping Station)	5	1
1.12	Tannery Lands (River Edge)	5	5
1.13	Land Bridge connection from Tannery to Belle Park	5	5
1.14	Belle Park Pathway Improvements (periphery)	5	5
1.15	Belle Park Lookout	5	5
1.16	Village Apartments Pathway Improvements (waterside path)	5	1
1.17	Third Crossing Landscape Improvements (at future bridge abutments)	1	5
1.18	Newmarket Lane Pathway Improvements (connect to outer station lookout)	5	5
1.19	Railway Underpass Pathway Connection	5	1
1.20	Create Connection (East of Montreal) from Underpass to Greer (below escarpment)	5	1
1.21	On Street Connection from Greer to Sutherland Dr. Park	1	1
1.22	Sutherland Drive Park	1	5
1.23	Pathway Connecting Sutherland Dr. Park to Highway 401 Crossing	5	1
1.24	West 401 Crossing (at Montreal Street)	1	1
1.25	Carpool Lot to Battersea South Pathway (Montreal / 401)	1	1
1.26	On Road link via Kingston Mills Rd. to Locks	1	1
1.27	Kingston Mills Locks Improvements	1	5
1.28	Pathway connection south of Kingston Mills Road to 401 (East side canal)	5	1
1.29	East 401 Crossing	1	1
1.30	Pathway Connections south of 401 (east side to quarry)	5	1
1.31	MacLean Trails Park	5	5
1.32	Lilla Burke Park	1	5
1.33	Former Rideau Marina Redevelopment	1	3
1.34	100 Foot Park	5	5
1.35	Highway 15 Onroad Link from 100 Foot Park to Craftsman Blvd	1	1
1.36	Highway 15 Roadside Lookout (north of Barriefield) on west side @Craftsman	1	5
1.37	Green Bay Open Space (North of James St. at point)	1	5

Themes		Other Popular Themes				
5D	5E	5F	5G	5H	5I	5J
Access to Swimming	Connections Along the Water	Improved Land Access	Improved Water Access	Variety of Interests	Variety of Users	Environmental Stewardship
Score	Score	Score	Score	Score	Score	Score
1	1	5	1	1	5	1
1	5	5	1	1	5	1
1	1	5	1	1	5	1
1	5	5	1	1	5	1
1	1	5	1	1	5	1
1	1	3	1	1	5	1
1	5	5	1	1	5	1
1	5	5	5	5	5	3
1	5	5	5	3	5	3
1	5	5	5	5	5	3
1	1	5	1	1	5	1
1	5	5	1	3	5	3
1	5	5	1	1	5	3
1	5	5	1	1	5	3
1	1	5	1	3	5	3
1	5	5	1	1	5	3
1	5	5	1	3	5	3
1	1	5	1	1	5	3
1	1	5	1	1	5	3
1	1	5	1	1	5	1
1	1	5	1	3	5	5
1	1	5	1	1	5	1
1	1	5	1	1	5	1
1	1	5	1	1	5	1
1	5	5	5	5	5	3
1	5	5	1	3	5	5
1	1	5	1	1	5	1
1	5	5	1	3	5	5
1	5	5	1	5	5	3
1	1	5	5	1	5	1
1	5	5	5	5	5	3
1	5	5	5	3	5	3
1	1	5	1	5	5	3
1	1	5	1	3	5	1
1	5	5	5	3	5	3

Table 58: Focus Area #1 Priority Matrix
Criteria 5B to 5J

Priority Matrix Scoring: Focus Area #1

Other Popular Themes	
5K	5L

#	Project Name	All Season	Built Heritage
		Score	Score
1.01	LaSalle Causeway - enhanced pedestrian access / crossing	5	1
1.02	Create Connection from causeway to Anglin Lot (@ DND Lands)	5	1
1.03	Sidewalk from LaSalle Causeway to King St.	5	1
1.04	Enhanced Connection from Armes Square to Anglin Bay	5	1
1.05	Anglin Parking Lot Connection (buffered pedestrian route - shore edge)	5	1
1.06	Wellington Street Sidewalk (both sides Bay Street to DFP)	5	1
1.07	Anglin Bay Bridge (From Frontenac Village to Douglas R. Fluhrer Park)	5	1
1.08	Douglas R. Fluhrer Park	5	5
1.09	Molly Brant Park (From north end of DFP to Molly Brant Point)	5	5
1.10	Emma Martin Park	5	5
1.11	Public Works Lands Connection Lookout (by River St. Pumping Station)	5	1
1.12	Tannery Lands (River Edge)	5	1
1.13	Land Bridge connection from Tannery to Belle Park	5	1
1.14	Belle Park Pathway Improvements (periphery)	5	1
1.15	Belle Park Lookout	5	5
1.16	Village Apartments Pathway Improvements (waterside path)	5	1
1.17	Third Crossing Landscape Improvements (at future bridge abutments)	5	1
1.18	Newmarket Lane Pathway Improvements (connect to outer station lookout)	5	1
1.19	Railway Underpass Pathway Connection	5	1
1.20	Create Connection (East of Montreal) from Underpass to Greer (below escarpment)	5	1
1.21	On Street Connection from Greer to Sutherland Dr. Park	5	1
1.22	Sutherland Drive Park	5	1
1.23	Pathway Connecting Sutherland Dr. Park to Highway 401 Crossing	5	1
1.24	West 401 Crossing (at Montreal Street)	5	1
1.25	Carpool Lot to Battersea South Pathway (Montreal / 401)	5	1
1.26	On Road link via Kingston Mills Rd. to Locks	5	1
1.27	Kingston Mills Locks Improvements	3	1
1.28	Pathway connection south of Kingston Mills Road to 401 (East side canal)	3	1
1.29	East 401 Crossing	5	1
1.30	Pathway Connections south of 401 (east side to quarry)	2	1
1.31	MacLean Trails Park	5	1
1.32	Lilla Burke Park	5	5
1.33	Former Rideau Marina Redevelopment	5	1
1.34	100 Foot Park	5	1
1.35	Highway 15 Onroad Link from 100 Foot Park to Craftsman Blvd	5	1
1.36	Highway 15 Roadside Lookout (north of Barriefield) on west side @Craftsman	5	1
1.37	Green Bay Open Space (North of James St. at point)	5	1

Total Score (out of 60)	Public Opinion Total Score	TOTAL SCORE (out of 100)
24	11	45.39
32	12	45.52
24	11	42.27
28	10	39.00
24	8	36.64
22	10	43.72
32	10	48.29
54	23	77.16
52	18	66.03
50	18	58.50
28	10	39.44
44	17	69.44
42	17	56.25
42	17	61.95
40	15	52.13
34	11	39.27
36	15	51.47
44	14	44.17
34	10	39.31
34	10	39.80
24	7	31.62
34	10	38.34
28	10	37.81
24	7	31.50
24	7	31.72
24	7	27.97
40	13	48.47
40	14	48.66
24	8	33.61
39	14	51.27
46	16	55.24
36	11	41.37
40	12	48.43
48	15	43.46
30	10	41.67
30	9	39.25
40	13	44.95

*Table 59: Focus Area #1 Priority Matrix
Criteria 5K to 5L and total score*

Priority Matrix Scoring: Focus Area #2

#	Project Name
2.01	Kingston Mills Locks North Dock
2.02	Southern Colonel By Lake Waterfront Path (east of Eden Valley Open Space)
2.03	Northern Colonel By Lake Waterfront Path (south of Edenwood Park)
2.04	Edenwood Park
2.05	Aragon Road Boat Launch (roadside at Colonel By Lake)
2.06	Cecil & Wilma Graham Park (Aragon Rd)
2.07	Jarvis Open Space (end of Jarvis Road)
2.08	Colonel By Park
2.09	Lookout on Treasure Island Causeway (at causeway)
2.10	Madoma Community Centre
2.11	Channel View Park
2.12	English Landing Park
2.13	Grass Creek Park
2.14	Rawsons Point
2.15	Riverwood Park
2.16	Little Collins Lake Small Craft Access (east side - Perth Rd)
2.17	Loughborough Lake Boat Launch (winter fishing access + snowmobile access)

Residents	
1A	1B
Proximity to Population	Proximity to Locations of Dense Population
Score	Score
1	1
1	1
1	1
1	1
1	1
1	1
1	1
1	1
1	1
1	1
1	1
1	1
1	1
1	1
1	1
1	1

Residents				Visitors	
1C	1D	1E	1F	1G	1H
Proximity to New Growth Areas	Weekday Attraction	After Work and Weekend Attraction	Outdoor Physical Activity	Visitor Attraction	Visitor Experience
Score	Score	Score	Score	Score	Score
1	1	5	1	3	3
1	1	3	3	1	3
1	1	3	3	1	3
1	1	3	3	1	1
1	1	5	3	1	3
1	1	5	5	3	5
1	1	5	3	1	3
1	1	5	3	1	3
1	1	1	1	1	1
1	1	5	5	1	3
1	1	3	3	1	3
1	1	5	3	1	3
1	1	5	5	5	5
1	1	5	1	1	3
1	1	1	3	1	1
1	1	3	1	3	3
1	1	5	1	3	5

Table 60: Focus Area #2 Priority Matrix
Criteria 1A to 1H

Priority Matrix Scoring: Focus Area #2

		Competitive Edge	
		1I	1J
		Attracting Residents	Retaining Residents
		Score	Score
#	Project Name		
2.01	Kingston Mills Locks North Dock	1	1
2.02	Southern Colonel By Lake Waterfront Path (east of Eden Valley Open Space)	1	3
2.03	Northern Colonel By Lake Waterfront Path (south of Edenwood Park)	1	3
2.04	Edenwood Park	1	1
2.05	Aragon Road Boat Launch (roadside at Colonel By Lake)	1	3
2.06	Cecil & Wilma Graham Park (Aragon Rd)	3	5
2.07	Jarvis Open Space (end of Jarvis Road)	3	3
2.08	Colonel By Park	3	3
2.09	Lookout on Treasure Island Causeway (at causeway)	1	1
2.10	Madoma Community Centre	1	1
2.11	Channel View Park	1	3
2.12	English Landing Park	1	1
2.13	Grass Creek Park	5	5
2.14	Rawsons Point	3	1
2.15	Riverwood Park	3	3
2.16	Little Collins Lake Small Craft Access (east side - Perth Rd)	3	3
2.17	Loughborough Lake Boat Launch (winter fishing access + snowmobile access)	3	3

City Image		Connectivity			Access		
1K	1L	2A	2B	2C			
City Image (outside)	City Image (inside)	Existing Connectivity	Proposed Connectivity	Improved Access			
Score	Score	Score	Score	Score	Total Score (out of 60)	%	Criteria Group #1: City Wide Benefit
1	1	1	1	1	20	36%	14.55
1	1	3	1	1	20	36%	14.55
1	1	5	3	5	20	36%	14.55
1	1	1	1	1	16	29%	11.64
1	3	1	1	5	24	44%	17.45
3	5	1	1	5	38	69%	27.64
1	1	1	1	5	24	44%	17.45
1	1	1	1	5	24	44%	17.45
1	1	1	1	5	12	22%	8.73
1	1	1	1	1	22	40%	16.00
1	1	1	1	5	20	36%	14.55
1	1	1	1	5	20	36%	14.55
5	5	1	1	1	44	80%	32.00
1	1	1	1	5	20	36%	14.55
1	1	1	1	5	18	33%	13.09
1	1	1	1	1	22	40%	16.00
1	1	1	1	1	26	47%	18.91

Table 61: Focus Area #2 Priority Matrix
Criteria 1I to 2C

Priority Matrix Scoring: Focus Area #2

		Access	
		2D	2E
		Attractiveness	Universal Accessibility
		Score	Score
#	Project Name		
2.01	Kingston Mills Locks North Dock	5	1
2.02	Southern Colonel By Lake Waterfront Path (east of Eden Valley Open Space)	5	1
2.03	Northern Colonel By Lake Waterfront Path (south of Edenwood Park)	5	1
2.04	Edenwood Park	5	1
2.05	Aragon Road Boat Launch (roadside at Colonel By Lake)	5	1
2.06	Cecil & Wilma Graham Park (Aragon Rd)	5	3
2.07	Jarvis Open Space (end of Jarvis Road)	5	3
2.08	Colonel By Park	5	3
2.09	Lookout on Treasure Island Causeway (at causeway)	5	3
2.10	Madoma Community Centre	5	3
2.11	Channel View Park	5	3
2.12	English Landing Park	5	3
2.13	Grass Creek Park	5	5
2.14	Rawsons Point	5	3
2.15	Riverwood Park	5	3
2.16	Little Collins Lake Small Craft Access (east side - Perth Rd)	5	3
2.17	Loughborough Lake Boat Launch (winter fishing access + snowmobile access)	5	3

Enhancements				Implementation Constraints	
2F	2G	2H		3A	3B
Expected Level of Use	Expected Impact	Aging Infrastructure		Partnerships	Approvals
Score	Score	Score	Total Score (out of 40)	Score	Score
3	3	3	18	3	3
3	3	1	18	5	5
3	3	1	26	1	5
3	1	1	14	5	5
3	5	1	22	3	5
5	5	1	26	3	5
3	3	1	22	5	5
1	3	1	20	5	5
1	3	1	20	5	5
1	3	1	16	5	5
3	3	1	22	5	5
1	3	1	20	5	5
5	5	1	24	5	5
5	3	1	24	1	5
3	1	1	20	5	5
3	3	1	18	5	5
3	5	3	22	1	5

Table 62: Focus Area #2 Priority Matrix
Criteria 2D to 3B

Priority Matrix Scoring: Focus Area #2

Dependencies	
3C	3D

Efficiencies Linked Projects

#	Project Name	Score	Score
2.01	Kingston Mills Locks North Dock	1	5
2.02	Southern Colonel By Lake Waterfront Path (east of Eden Valley Open Space)	1	5
2.03	Northern Colonel By Lake Waterfront Path (south of Edenwood Park)	1	5
2.04	Edenwood Park	1	5
2.05	Aragon Road Boat Launch (roadside at Colonel By Lake)	1	5
2.06	Cecil & Wilma Graham Park (Aragon Rd)	1	5
2.07	Jarvis Open Space (end of Jarvis Road)	1	5
2.08	Colonel By Park	1	5
2.09	Lookout on Treasure Island Causeway (at causeway)	1	5
2.10	Madoma Community Centre	1	5
2.11	Channel View Park	1	5
2.12	English Landing Park	1	5
2.13	Grass Creek Park	1	5
2.14	Rawsons Point	1	5
2.15	Riverwood Park	1	5
2.16	Little Collins Lake Small Craft Access (east side - Perth Rd)	1	5
2.17	Loughborough Lake Boat Launch (winter fishing access + snowmobile access)	1	5

Financial Opportunity				Public Input		Post Card Themes
3E				4A		5A
Financing				Public Support		Access to Nature
Score	Total Score (out of 25)	Best Practices Total Score (out of 65)		Total # of Dots	Group #4: Community Preference (out of 25)	Score
1	13	26.50	5	1	1	
1	17	28.10	1	0	5	
1	13	29.50	1	0	5	
1	17	23.69	3	1	1	
1	15	31.70	5	1	1	
1	15	43.39	18	4	5	
1	17	32.50	1	0	1	
1	17	31.75	2	0	1	
1	17	23.03	1	0	1	
1	17	28.80	2	0	1	
1	17	29.60	8	2	1	
1	17	28.85	2	0	1	
1	17	47.80	23	5	5	
1	13	28.75			5	
1	17	27.39	0	0	1	
1	17	29.55	0	0	1	
1	13	32.36	2	0	1	

Table 63: Focus Area #2 Priority Matrix
Criteria 3C to 5A

Priority Matrix Scoring: Focus Area #2

Post Card Generated	
5B	5C

More Trails **Places to Relax**

		Score	Score
#	Project Name		
2.01	Kingston Mills Locks North Dock	1	5
2.02	Southern Colonel By Lake Waterfront Path (east of Eden Valley Open Space)	5	5
2.03	Northern Colonel By Lake Waterfront Path (south of Edenwood Park)	5	5
2.04	Edenwood Park	1	5
2.05	Aragon Road Boat Launch (roadside at Colonel By Lake)	1	1
2.06	Cecil & Wilma Graham Park (Aragon Rd)	5	5
2.07	Jarvis Open Space (end of Jarvis Road)	1	5
2.08	Colonel By Park	1	5
2.09	Lookout on Treasure Island Causeway (at causeway)	1	5
2.10	Madoma Community Centre	1	5
2.11	Channel View Park	1	5
2.12	English Landing Park	1	5
2.13	Grass Creek Park	1	5
2.14	Rawsons Point	5	5
2.15	Riverwood Park	1	5
2.16	Little Collins Lake Small Craft Access (east side - Perth Rd)	1	1
2.17	Loughborough Lake Boat Launch (winter fishing access + snowmobile access)	1	1

Themes		Other Popular Themes				
5D	5E	5F	5G	5H	5I	5J
Access to Swimming	Connections Along the Water	Improved Land Access	Improved Water Access	Variety of Interests	Variety of Users	Environmental Stewardship
	Score	Score	Score	Score	Score	Score
1	1	1	5	3	5	1
1	5	1	1	3	5	1
1	5	1	1	3	5	1
1	1	5	5	3	5	1
1	1	1	5	3	1	1
5	5	5	5	5	5	5
1	1	5	5	3	5	1
1	1	5	5	3	5	1
1	1	1	1	3	5	1
1	1	1	1	3	5	1
1	1	5	5	3	5	1
1	1	5	5	3	5	1
5	1	5	5	5	5	5
1	1	1	5	3	5	1
1	1	5	5	3	5	1
1	1	1	5	3	1	1
1	1	1	5	3	1	1

Table 64: Focus Area #2 Priority Matrix
Criteria 5B to 5J

Priority Matrix Scoring: Focus Area #2

Other Popular Themes	
5K	5L

#	Project Name	All Season	Built Heritage
2.01	Kingston Mills Locks North Dock	3	1
2.02	Southern Colonel By Lake Waterfront Path (east of Eden Valley Open Space)	3	1
2.03	Northern Colonel By Lake Waterfront Path (south of Edenwood Park)	3	1
2.04	Edenwood Park	3	1
2.05	Aragon Road Boat Launch (roadside at Colonel By Lake)	3	1
2.06	Cecil & Wilma Graham Park (Aragon Rd)	5	1
2.07	Jarvis Open Space (end of Jarvis Road)	3	1
2.08	Colonel By Park	3	1
2.09	Lookout on Treasure Island Causeway (at causeway)	3	1
2.10	Madoma Community Centre	3	1
2.11	Channel View Park	3	1
2.12	English Landing Park	3	1
2.13	Grass Creek Park	5	5
2.14	Rawsons Point	3	1
2.15	Riverwood Park	3	1
2.16	Little Collins Lake Small Craft Access (east side - Perth Rd)	3	1
2.17	Loughborough Lake Boat Launch (winter fishing access + snowmobile access)	3	1

Total Score (out of 60)	Public Opinion Total Score	TOTAL SCORE (out of 100)
28	9	35.76
36	11	38.81
36	11	40.21
32	10	33.68
20	7	38.63
56	20	63.66
32	10	42.06
32	10	41.53
24	7	30.25
24	7	36.24
32	11	40.68
32	10	38.62
52	20	68.00
36	11	39.25
32	9	36.72
20	6	35.38
20	6	38.63

*Table 65: Focus Area #2 Priority Matrix
Criteria 5K to 5L and total score*

Priority Matrix Scoring: Focus Area #3

		Residents	
		1A	1B
		Proximity to Population	Proximity to Locations of Dense Population
		Score	Score
#	Project Name		
3.01	Arthur Lower Park (at Homeward Ave and Bath Rd)	3	1
3.02	Collins Bay Open Space (at Rankin Cres and Bath Rd.)	3	1
3.03	Collins Bay Boat Launch (Phase 2)	3	1
3.04	Collins Bay Road Right of Way Waterfront Access	3	1
3.05	Bath Road Bridge Connection (Bayridge Drive)	3	1
3.06	Coverdale Drive On Street Pathway (Southside)	3	1
3.07	Rotary Park	3	1
3.08	Lemoine Point Conservation Area	3	1
3.09	Waterfront Pathway Connection -From Lemoine Point to Front Rd.	3	1
3.10	Front Rd Path on Street Pathway (Lemoine to Smugglers Cove)	3	1
3.11	Smugglers Cove (Old Front Rd. and Front Rd - west end)	3	1
3.12	Old Front Rd Path on Street Pathway	3	1
3.13	Horse Bay Parkette (at Bayridge and Front Rd.)	3	1
3.14	Lakeland Point Drive on Street Pathway	3	1
3.15	Reddendale On Road Path (Front Rd to Patterson Park)	3	1
3.16	Private Park (need address)	3	1
3.17	Everitt Park	3	1
3.18	Private Park (18 Lakeshore Blvd) "No Dog" Park	3	1
3.19	Crerar Park	3	1
3.20	Patterson Park	3	1
3.21	Sand Bay (behind Invista)	3	1
3.22	Cataraqui Bay Breakwater	3	1
3.23	Front Road Causeway (west end by Invista)	3	1
3.24	Little Cataraqui Marsh Pathway West (CSC Lands)	3	1
3.25	Greenview Drive Pathway Connection (By apartments)	3	1
3.26	Rideau Trail: Little Cataraqui Marsh Pathway (east)	3	1
3.27	Elevator Bay Pier (south end)	3	1

Residents				Visitors	
1C	1D	1E	1F	1G	1H
Proximity to New Growth Areas	Weekday Attraction	After Work and Weekend Attraction	Outdoor Physical Activity	Visitor Attraction	Visitor Experience
Score	Score	Score	Score	Score	Score
3	3	3	1	1	1
3	3	3	1	1	3
3	3	5	1	5	5
3	3	1	1	1	3
3	3	1	1	1	3
3	3	1	1	1	1
3	3	5	5	3	3
3	3	5	5	3	3
3	3	3	5	3	3
3	3	1	1	1	1
3	3	1	1	1	1
3	3	1	1	1	1
3	3	3	1	1	3
3	3	1	1	1	3
3	3	1	1	1	1
3	3	1	1	1	3
3	3	3	1	1	3
3	3	1	1	1	3
3	3	3	1	1	3
3	3	5	1	1	5
3	3	5	5	5	5
3	3	1	1	1	3
3	3	3	1	1	3
3	3	3	3	1	3
3	3	3	3	1	3
3	3	3	3	1	3
3	3	5	1	1	3

Table 66: Focus Area #3 Priority Matrix
Criteria 1A to 1H

Priority Matrix Scoring: Focus Area #3

		Competitive Edge	
		1I	1J
		Attracting Residents	Retaining Residents
		Score	Score
#	Project Name		
3.01	Arthur Lower Park (at Homeward Ave and Bath Rd)	1	1
3.02	Collins Bay Open Space (at Rankin Cres and Bath Rd.)	1	1
3.03	Collins Bay Boat Launch (Phase 2)	3	5
3.04	Collins Bay Road Right of Way Waterfront Access	1	1
3.05	Bath Road Bridge Connection (Bayridge Drive)	1	1
3.06	Coverdale Drive On Street Pathway (Southside)	1	1
3.07	Rotary Park	3	5
3.08	Lemoine Point Conservation Area	3	5
3.09	Waterfront Pathway Connection -From Lemoine Point to Front Rd.	5	1
3.10	Front Rd Path on Street Pathway (Lemoine to Smugglers Cove)	1	1
3.11	Smugglers Cove (Old Front Rd. and Front Rd - west end)	1	1
3.12	Old Front Rd Path on Street Pathway	1	1
3.13	Horsley Bay Parkette (at Bayridge and Front Rd.)	1	1
3.14	Lakeland Point Drive on Street Pathway	1	1
3.15	Reddendale On Road Path (Front Rd to Patterson Park)	1	1
3.16	Private Park (need address)	1	1
3.17	Everitt Park	3	3
3.18	Private Park (18 Lakeshore Blvd) "No Dog" Park	1	1
3.19	Crerar Park	3	3
3.20	Patterson Park	3	5
3.21	Sand Bay (behind Invista)	5	5
3.22	Cataraqui Bay Breakwater	1	1
3.23	Front Road Causeway (west end by Invista)	1	1
3.24	Little Cataraqui Marsh Pathway West (CSC Lands)	1	1
3.25	Greenview Drive Pathway Connection (By apartments)	1	1
3.26	Rideau Trail: Little Cataraqui Marsh Pathway (east)	1	1
3.27	Elevator Bay Pier (south end)	1	1

City Image		Connectivity			Access	
1K	1L	2A	2B	2C		
City Image (outside)	City Image (inside)	Existing Connectivity	Proposed Connectivity	Improved Access		
Score	Score	Total Score (out of 60)	%	Criteria Group #1: City Wide Benefit	Score	Score
1	1	20	36%	14.55	1	1
1	1	22	40%	16.00	1	1
3	3	40	73%	29.09	1	1
1	1	20	36%	14.55	1	1
1	1	20	36%	14.55	1	3
1	1	18	33%	13.09	1	3
1	3	38	69%	27.64	3	1
5	5	44	80%	32.00	3	1
5	5	40	73%	29.09	5	3
1	1	18	33%	13.09	1	3
1	1	18	33%	13.09	1	1
1	1	18	33%	13.09	3	3
3	1	24	44%	17.45	1	1
1	1	20	36%	14.55	1	3
1	1	18	33%	13.09	3	3
1	1	20	36%	14.55	1	1
1	3	28	51%	20.36	1	1
1	1	20	36%	14.55	1	1
1	3	28	51%	20.36	1	1
3	5	38	69%	27.64	1	1
5	5	50	91%	36.36	5	3
1	1	20	36%	14.55	1	1
1	1	22	40%	16.00	1	3
1	1	24	44%	17.45	3	3
1	1	24	44%	17.45	3	3
1	1	24	44%	17.45	3	3
1	3	26	47%	18.91	1	1

Table 67: Focus Area #3 Priority Matrix
Criteria 1I to 2C

Priority Matrix Scoring: Focus Area #3

		Access	
		2D	2E
		Attractiveness	Universal Accessibility
		Score	Score
#	Project Name		
3.01	Arthur Lower Park (at Homeward Ave and Bath Rd)	5	1
3.02	Collins Bay Open Space (at Rankin Cres and Bath Rd.)	5	1
3.03	Collins Bay Boat Launch (Phase 2)	5	3
3.04	Collins Bay Road Right of Way Waterfront Access	5	1
3.05	Bath Road Bridge Connection (Bayridge Drive)	5	1
3.06	Coverdale Drive On Street Pathway (Southside)	5	1
3.07	Rotary Park	5	1
3.08	Lemoine Point Conservation Area	5	3
3.09	Waterfront Pathway Connection -From Lemoine Point to Front Rd.	5	3
3.10	Front Rd Path on Street Pathway (Lemoine to Smugglers Cove)	5	3
3.11	Smugglers Cove (Old Front Rd. and Front Rd - west end)	5	3
3.12	Old Front Rd Path on Street Pathway	5	1
3.13	Horse Bay Parkette (at Bayridge and Front Rd.)	5	3
3.14	Lakeland Point Drive on Street Pathway	5	1
3.15	Reddendale On Road Path (Front Rd to Patterson Park)	5	1
3.16	Private Park (need address)	5	3
3.17	Everitt Park	5	3
3.18	Private Park (18 Lakeshore Blvd) "No Dog" Park	5	3
3.19	Crerar Park	5	3
3.20	Patterson Park	5	3
3.21	Sand Bay (behind Invista)	5	5
3.22	Cataraqui Bay Breakwater	1	0
3.23	Front Road Causeway (west end by Invista)	5	3
3.24	Little Cataraqui Marsh Pathway West (CSC Lands)	5	1
3.25	Greenview Drive Pathway Connection (By apartments)	5	1
3.26	Rideau Trail: Little Cataraqui Marsh Pathway (east)	5	1
3.27	Elevator Bay Pier (south end)	5	3

Enhancements				Implementation Constraints	
2F	2G	2H		3A	3B
Expected Level of Use	Expected Impact	Aging Infrastructure		Partnerships	Approvals
Score	Score	Score	Total Score (out of 40)	Score	Score
1	3	3	20	5	5
3	3	1	20	5	5
5	5	3	24	5	5
3	3	1	16	5	5
3	3	1	18	5	5
3	3	1	18	5	5
3	3	3	20	5	5
3	3	3	22	3	3
5	3	1	30	1	5
3	3	1	20	5	5
3	3	1	18	3	3
1	3	1	18	5	5
3	3	1	18	5	5
1	3	1	16	5	5
1	3	1	18	5	5
1	3	1	20	1	5
3	3	1	18	5	5
3	3	1	22	1	5
3	3	1	18	5	5
5	5	1	22	5	5
5	5	1	34	1	5
1	1	5	11	3	5
3	3	1	20	5	5
3	3	1	24	3	3
3	3	1	24	5	5
3	3	1	20	5	5
3	5	1	24	3	5

Table 68: Focus Area #3 Priority Matrix
Criteria 2D to 3B

Priority Matrix Scoring: Focus Area #3

Dependencies	
3C	3D

Efficiencies Linked Projects

#	Project Name	Score	Score
3.01	Arthur Lower Park (at Homeward Ave and Bath Rd)	1	5
3.02	Collins Bay Open Space (at Rankin Cres and Bath Rd.)	1	5
3.03	Collins Bay Boat Launch (Phase 2)	1	5
3.04	Collins Bay Road Right of Way Waterfront Access	1	5
3.05	Bath Road Bridge Connection (Bayridge Drive)	1	5
3.06	Coverdale Drive On Street Pathway (Southside)	1	5
3.07	Rotary Park	1	5
3.08	Lemoine Point Conservation Area	1	5
3.09	Waterfront Pathway Connection -From Lemoine Point to Front Rd.	1	5
3.10	Front Rd Path on Street Pathway (Lemoine to Smugglers Cove)	1	5
3.11	Smugglers Cove (Old Front Rd. and Front Rd - west end)	1	5
3.12	Old Front Rd Path on Street Pathway	1	5
3.13	Horse Bay Parkette (at Bayridge and Front Rd.)	1	5
3.14	Lakeland Point Drive on Street Pathway	1	5
3.15	Reddendale On Road Path (Front Rd to Patterson Park)	1	5
3.16	Private Park (need address)	1	5
3.17	Everitt Park	1	5
3.18	Private Park (18 Lakeshore Blvd) "No Dog" Park	1	5
3.19	Crerar Park	1	5
3.20	Patterson Park	1	5
3.21	Sand Bay (behind Invista)	1	5
3.22	Cataraqui Bay Breakwater	1	5
3.23	Front Road Causeway (west end by Invista)	1	5
3.24	Little Cataraqui Marsh Pathway West (CSC Lands)	1	5
3.25	Greenview Drive Pathway Connection (By apartments)	1	5
3.26	Rideau Trail: Little Cataraqui Marsh Pathway (east)	1	5
3.27	Elevator Bay Pier (south end)	1	5

Financial Opportunity 3E			Public Input 4A		Post Card Themes 5A
Financing			Public Support		Access to Nature
Score	Total Score (out of 25)	Best Practices Total Score (out of 65)	Total # of Dots	Group #4: Community Preference (out of 25)	Score
1	17	28.85	5	1	1
1	17	30.30	4	1	1
1	17	44.89	9	2	1
1	17	27.35	1	0	1
1	17	28.10	3	1	1
1	17	26.64	3	1	1
1	17	41.94	15	3	1
1	13	45.45	7	2	5
1	13	45.54	18	4	5
1	17	27.39	4	1	1
1	13	25.04	2	0	1
1	17	26.64	4	1	1
1	17	31.00	3	1	1
1	17	27.35	7	2	1
1	17	26.64	8	2	1
1	13	27.25	1	0	1
1	17	33.91	2	0	1
1	13	28.00	0	0	1
1	17	33.91	8	2	1
1	17	42.69	6	1	1
1	13	54.31	14	3	1
1	15	24.67	8	2	1
1	17	30.30	22	5	1
1	13	31.65	20	4	5
1	17	33.25	0	0	5
1	17	31.75	14	3	5
1	15	33.91	19	4	1

Table 69: Focus Area #3 Priority Matrix
Criteria 3C to 5A

Priority Matrix Scoring: Focus Area #3

Post Card Generated	
5B	5C

More Trails Places to Relax

#	Project Name	Score	Score
3.01	Arthur Lower Park (at Homeward Ave and Bath Rd)	1	5
3.02	Collins Bay Open Space (at Rankin Cres and Bath Rd.)	1	5
3.03	Collins Bay Boat Launch (Phase 2)	1	1
3.04	Collins Bay Road Right of Way Waterfront Access	1	1
3.05	Bath Road Bridge Connection (Bayridge Drive)	1	1
3.06	Coverdale Drive On Street Pathway (Southside)	1	1
3.07	Rotary Park	1	5
3.08	Lemoine Point Conservation Area	5	5
3.09	Waterfront Pathway Connection -From Lemoine Point to Front Rd.	5	5
3.10	Front Rd Path on Street Pathway (Lemoine to Smugglers Cove)	1	5
3.11	Smugglers Cove (Old Front Rd. and Front Rd - west end)	1	1
3.12	Old Front Rd Path on Street Pathway	1	1
3.13	Horse Bay Parkette (at Bayridge and Front Rd.)	1	5
3.14	Lakeland Point Drive on Street Pathway	1	1
3.15	Reddendale On Road Path (Front Rd to Patterson Park)	1	1
3.16	Private Park (need address)	1	5
3.17	Everitt Park	1	5
3.18	Private Park (18 Lakeshore Blvd) "No Dog" Park	1	5
3.19	Crerar Park	1	5
3.20	Patterson Park	1	5
3.21	Sand Bay (behind Invista)	5	1
3.22	Cataraqui Bay Breakwater	1	1
3.23	Front Road Causeway (west end by Invista)	1	1
3.24	Little Cataraqui Marsh Pathway West (CSC Lands)	5	1
3.25	Greenview Drive Pathway Connection (By apartments)	5	1
3.26	Rideau Trail: Little Cataraqui Marsh Pathway (east)	5	1
3.27	Elevator Bay Pier (south end)	1	5

Themes		Other Popular Themes				
5D	5E	5F	5G	5H	5I	5J
Access to Swimming	Connections Along the Water	Improved Land Access	Improved Water Access	Variety of Interests	Variety of Users	Environmental Stewardship
Score	Score	Score	Score	Score	Score	Score
1	5	5	1	5	1	3
1	5	1	1	5	1	3
1	1	5	1	3	1	3
1	5	1	1	5	1	3
5	5	1	1	5	1	3
5	5	1	1	5	1	3
1	5	5	5	5	3	5
1	5	5	5	5	3	5
5	5	1	1	5	3	5
5	5	1	1	5	1	3
1	5	1	1	5	1	3
5	5	1	1	5	1	3
5	5	1	1	5	3	5
5	5	1	1	5	1	3
5	5	1	1	5	1	3
1	5	1	1	5	1	5
1	5	1	5	5	3	5
1	5	1	5	5	1	5
1	5	5	5	5	3	5
1	5	5	5	5	3	5
5	5	5	5	5	3	5
1	1	1	1	5	5	5
5	5	1	1	5	1	3
5	5	1	1	5	3	5
5	5	1	1	5	3	5
5	5	1	1	5	3	5
1	5	1	1	5	1	3

Table 70: Focus Area #3 Priority Matrix
Criteria 5B to 5J

Priority Matrix Scoring: Focus Area #3

Other Popular Themes	
5K	5L

All Season	Built Heritage
------------	----------------

#	Project Name	Score	Score
3.01	Arthur Lower Park (at Homeward Ave and Bath Rd)	3	1
3.02	Collins Bay Open Space (at Rankin Cres and Bath Rd.)	3	1
3.03	Collins Bay Boat Launch (Phase 2)	3	1
3.04	Collins Bay Road Right of Way Waterfront Access	3	1
3.05	Bath Road Bridge Connection (Bayridge Drive)	3	1
3.06	Coverdale Drive On Street Pathway (Southside)	3	1
3.07	Rotary Park	5	1
3.08	Lemoine Point Conservation Area	5	1
3.09	Waterfront Pathway Connection -From Lemoine Point to Front Rd.	5	1
3.10	Front Rd Path on Street Pathway (Lemoine to Smugglers Cove)	3	1
3.11	Smugglers Cove (Old Front Rd. and Front Rd - west end)	3	1
3.12	Old Front Rd Path on Street Pathway	3	1
3.13	Horse Bay Parkette (at Bayridge and Front Rd.)	5	1
3.14	Lakeland Point Drive on Street Pathway	3	1
3.15	Reddendale On Road Path (Front Rd to Patterson Park)	3	1
3.16	Private Park (need address)	5	1
3.17	Everitt Park	5	1
3.18	Private Park (18 Lakeshore Blvd) "No Dog" Park	5	1
3.19	Crerar Park	5	1
3.20	Patterson Park	5	5
3.21	Sand Bay (behind Invista)	5	1
3.22	Cataraqui Bay Breakwater	5	1
3.23	Front Road Causeway (west end by Invista)	3	1
3.24	Little Cataraqui Marsh Pathway West (CSC Lands)	5	1
3.25	Greenview Drive Pathway Connection (By apartments)	5	1
3.26	Rideau Trail: Little Cataraqui Marsh Pathway (east)	5	1
3.27	Elevator Bay Pier (south end)	3	1

Total Score (out of 60)	Public Opinion Total Score	TOTAL SCORE (out of 100)
30	10	38.69
26	8	38.76
20	8	52.69
22	7	33.98
26	8	36.34
26	8	34.88
38	14	56.30
50	16	61.56
42	16	61.73
30	10	37.02
22	7	31.90
26	8	35.10
38	12	42.74
26	9	36.46
26	9	35.97
28	8	35.63
38	12	45.43
32	9	37.33
42	14	47.91
46	15	57.42
46	16	70.79
24	9	33.42
26	12	42.70
38	15	47.11
38	11	44.34
38	14	45.90
26	12	45.65

*Table 71: Focus Area #3 Priority Matrix
Criteria 5K to 5L and total score*

Priority Matrix Scoring: Focus Area #4

		Residents	
		1A	1B
		Proximity to Population	Proximity to Locations of Dense Population
		Score	Score
#	Project Name		
4.01	Improved Connection through Providence Continuing Care Centre	3	3
4.02	Transport Canada Coal Dock (at Lakewatch Lane)	3	3
4.03	Portsmouth Olympic Harbour	3	3
4.04	Kingston Penitentiary (Foot of Sir John A. Macdonald Blvd)	3	3
4.05	King Street West Sidewalk (South Side from Penitentiary to Breakwater Park)	5	5
4.06	Sidewalk in Alwington Place King St. to CSC St. Helens)	5	5
4.07	Correction Canada Property - Pathway link Alwington to Tett (through St. Helens)	5	5
4.08	J.K. Tett Centre Pathway link	5	5
4.09	Breakwater Park (2013 Master Plan)	5	5
4.10	Kingston Central Heating Plant (south side)	5	5
4.11	Macdonald Park	5	5
4.12	Richardson Beach	5	5
4.13	On Road Pathway - Emily St. to Simcoe Street via King	5	5

Residents				Visitors	
1C	1D	1E	1F	1G	1H
Proximity to New Growth Areas	Weekday Attraction	After Work and Weekend Attraction	Outdoor Physical Activity	Visitor Attraction	Visitor Experience
Score	Score	Score	Score	Score	Score
1	3	5	5	5	5
1	3	3	5	1	3
1	3	5	5	5	5
1	3	5	1	5	5
3	5	5	5	3	3
3	5	1	5	1	1
3	5	3	5	3	3
3	5	3	5	3	3
3	5	5	5	5	5
3	5	3	5	1	5
3	5	5	5	5	5
3	5	5	5	5	5
3	5	5	5	3	3

Table 72: Focus Area #4 Priority Matrix
Criteria 1A to 1H

Priority Matrix Scoring: Focus Area #4

		Competitive Edge	
		1I	1J
		Attracting Residents	Retaining Residents
		Score	Score
#	Project Name		
4.01	Improved Connection through Providence Continuing Care Centre	3	5
4.02	Transport Canada Coal Dock (at Lakewatch Lane)	1	1
4.03	Portsmouth Olympic Harbour	5	5
4.04	Kingston Penitentiary (Foot of Sir John A. Macdonald Blvd)	3	3
4.05	King Street West Sidewalk (South Side from Penitentiary to Breakwater Park)	3	3
4.06	Sidewalk in Alwington Place King St. to CSC St. Helens)	1	1
4.07	Correction Canada Property - Pathway link Alwington to Tett (through St. Helens)	3	3
4.08	J.K. Tett Centre Pathway link	5	3
4.09	Breakwater Park (2013 Master Plan)	5	5
4.10	Kingston Central Heating Plant (south side)	1	1
4.11	Macdonald Park	5	5
4.12	Richardson Beach	5	5
4.13	On Road Pathway - Emily St. to Simcoe Street via King	3	1

City Image		Connectivity			Access	
1K	IL	2A	2B	2C		
City Image (outside)	City Image (inside)	Existing Connectivity	Proposed Connectivity	Improved Access		
Score	Score	Score	Score	Score		
		Total Score (out of 60)	%	Criteria Group #1: City Wide Benefit		
3	3	44	80%	32.00	3	1
3	3	30	55%	21.82	3	1
5	5	50	91%	36.36	5	3
3	5	40	73%	29.09	5	3
3	3	46	84%	33.45	3	3
1	1	30	55%	21.82	3	1
3	3	44	80%	32.00	5	3
3	3	46	84%	33.45	3	3
5	5	58	105%	42.18	3	1
3	5	42	76%	30.55	3	1
3	5	56	102%	40.73	3	1
5	5	58	105%	42.18	1	1
1	3	42	76%	30.55	3	3

Table 73: Focus Area #4 Priority Matrix
Criteria 1I to 2C

Priority Matrix Scoring: Focus Area #4

Access	
2D	2E

Attractiveness	Universal Accessibility
----------------	-------------------------

#	Project Name	Score	Score
4.01	Improved Connection through Providence Continuing Care Centre	5	5
4.02	Transport Canada Coal Dock (at Lakewatch Lane)	5	3
4.03	Portsmouth Olympic Harbour	5	3
4.04	Kingston Penitentiary (Foot of Sir John A. Macdonald Blvd)	5	3
4.05	King Street West Sidewalk (South Side from Penitentiary to Breakwater Park)	5	5
4.06	Sidewalk in Alwington Place King St. to CSC St. Helens)	5	5
4.07	Correction Canada Property - Pathway link Alwington to Tett (through St. Helens)	5	5
4.08	J.K. Tett Centre Pathway link	5	5
4.09	Breakwater Park (2013 Master Plan)	5	5
4.10	Kingston Central Heating Plant (south side)	5	5
4.11	Macdonald Park	5	3
4.12	Richardson Beach	5	5
4.13	On Road Pathway - Emily St. to Simcoe Street via King	5	5

Enhancements			Implementation Constraints	
2F	2G	2H	3A	3B
Expected Level of Use	Expected Impact	Aging Infrastructure	Partnerships	Approvals
Score	Score	Score	Score	Score
Total Score (out of 40)				
5	3	3	3	3
5	3	3	3	3
5	3	3	3	3
5	3	3	1	3
5	3	3	5	5
1	3	3	5	5
3	3	3	3	3
3	3	3	3	3
5	3	3	5	5
5	3	3	3	3
5	3	3	5	5
5	3	3	5	5
5	3	3	5	5
3	3	3	5	5

Table 74: Focus Area #4 Priority Matrix
Criteria 2D to 3B

Priority Matrix Scoring: Focus Area #4

Dependencies	
3C	3D

Efficiencies Linked Projects

#	Project Name	Score	Score
4.01	Improved Connection through Providence Continuing Care Centre	1	5
4.02	Transport Canada Coal Dock (at Lakewatch Lane)	1	5
4.03	Portsmouth Olympic Harbour	1	5
4.04	Kingston Penitentiary (Foot of Sir John A. Macdonald Blvd)	1	1
4.05	King Street West Sidewalk (South Side from Penitentiary to Breakwater Park)	5	5
4.06	Sidewalk in Alwington Place King St. to CSC St. Helens)	1	5
4.07	Correction Canada Property - Pathway link Alwington to Tett (through St. Helens)	1	5
4.08	J.K. Tett Centre Pathway link	1	5
4.09	Breakwater Park (2013 Master Plan)	1	5
4.10	Kingston Central Heating Plant (south side)	1	5
4.11	Macdonald Park	1	5
4.12	Richardson Beach	1	5
4.13	On Road Pathway - Emily St. to Simcoe Street via King	5	5

Financial Opportunity				Public Input		Post Card Themes
3E				4A		5A
Financing				Public Support		Access to Nature
Score	Total Score (out of 25)	Best Practices Total Score (out of 65)		Total # of Dots	Group #4: Community Preference (out of 25)	Score
1	13	46.95		16	4	5
1	13	36.02		19	4	1
1	13	53.56		24	5	1
1	7	43.89		59	13	1
1	21	52.35		53	12	1
1	17	36.87		26	6	1
1	13	47.70		12	3	1
1	13	48.40		25	5	1
1	17	58.73		71	16	1
1	13	45.50		6	1	1
1	17	56.53		43	9	1
1	17	57.98		80	18	1
1	21	48.70		12	3	1

Table 75: Focus Area #4 Priority Matrix
Criteria 3C to 5A

Priority Matrix Scoring: Focus Area #4

Post Card Generated	
5B	5C

More Trails **Places to Relax**

#	Project Name	Score	Score
4.01	Improved Connection through Providence Continuing Care Centre	5	5
4.02	Transport Canada Coal Dock (at Lakewatch Lane)	1	1
4.03	Portsmouth Olympic Harbour	1	5
4.04	Kingston Penitentiary (Foot of Sir John A. Macdonald Blvd)	1	5
4.05	King Street West Sidewalk (South Side from Penitentiary to Breakwater Park)	1	1
4.06	Sidewalk in Alwington Place King St. to CSC St. Helens)	1	1
4.07	Correction Canada Property - Pathway link Alwington to Tett (through St. Helens)	1	1
4.08	J.K. Tett Centre Pathway link	1	1
4.09	Breakwater Park (2013 Master Plan)	1	5
4.10	Kingston Central Heating Plant (south side)	1	5
4.11	Macdonald Park	1	5
4.12	Richardson Beach	1	5
4.13	On Road Pathway - Emily St. to Simcoe Street via King	1	1

Themes		Other Popular Themes				
5D	5E	5F	5G	5H	5I	5J
Access to Swimming	Connections Along the Water	Improved Land Access	Improved Water Access	Variety of Interests	Variety of Users	Environmental Stewardship
Score	Score	Score	Score	Score	Score	Score
1	5	5	1	3	5	3
5	1	1	5	1	5	5
1	1	1	5	5	5	3
1	5	5	1	3	5	3
1	5	5	1	1	5	1
1	5	5	1	1	5	1
1	5	5	1	1	5	1
1	5	5	1	1	5	1
5	5	5	5	5	5	3
1	5	5	1	5	5	3
1	5	5	1	5	5	1
5	5	1	5	5	5	3
1	5	5	1	1	5	1

Table 76: Focus Area #4 Priority Matrix
Criteria 5B to 5J

Priority Matrix Scoring: Focus Area #4

Other Popular Themes	
5K	5L

#	Project Name	All Season	Built Heritage
		Score	Score
4.01	Improved Connection through Providence Continuing Care Centre	5	1
4.02	Transport Canada Coal Dock (at Lakewatch Lane)	3	1
4.03	Portsmouth Olympic Harbour	5	1
4.04	Kingston Penitentiary (Foot of Sir John A. Macdonald Blvd)	3	5
4.05	King Street West Sidewalk (South Side from Penitentiary to Breakwater Park)	5	1
4.06	Sidewalk in Alwington Place King St. to CSC St. Helens)	5	1
4.07	Correction Canada Property - Pathway link Alwington to Tett (through St. Helens)	5	5
4.08	J.K. Tett Centre Pathway link	5	1
4.09	Breakwater Park (2013 Master Plan)	5	1
4.10	Kingston Central Heating Plant (south side)	5	1
4.11	Macdonald Park	5	1
4.12	Richardson Beach	3	5
4.13	On Road Pathway - Emily St. to Simcoe Street via King	5	1

Total Score (out of 60)	Public Opinion Total Score	TOTAL SCORE (out of 100)
44	16	63.28
30	13	48.92
34	15	68.73
38	24	67.88
28	20	72.11
28	14	50.72
32	12	59.66
28	14	62.04
46	29	87.68
38	12	57.89
36	20	76.43
44	30	88.32
28	11	59.49

*Table 77: Focus Area #4 Priority Matrix
Criteria 5K to 5L and total score*

Priority Matrix Scoring: Focus Area #5

		Residents	
		1A	1B
		Proximity to Population	Proximity to Locations of Dense Population
		Score	Score
#	Project Name		
5.01	Waterfront Pathway Connection Simcoe St. to West St.	5	5
5.02	West Street Boat Launch	5	5
5.03	An Gorta Mor Park	5	5
5.04	Pump House Steam Museum Pathway Improvements	5	5
5.05	Pathway connecting Pump House Museum to Lower Union (Shipyards Apt)	5	5
5.06	Lower Union Parking Reconfiguration (Marine Museum Ontario St.)	5	5
5.07	Lower Union Pier Enhancements (vacant)	5	5
5.08	Navy Memorial Park	5	5
5.09	Pedestrian Feature Bridge (Lower Union Pier to Marine Museum)	5	5
5.10	Marine Museum Promenade and Park (south of Marine Museum)	5	5
5.11	Gore Street Enhancement and Lookout (foot of Gore St. at Battery)	5	5
5.12	Battery Park	5	5
5.13	Confederation Basin Breakwater	5	5
5.14	Confederation Basin Marina	5	5
5.15	Waterfront Promenade Improvements (William St to Johnson St. behind Landmark)	5	5
5.16	Pedestrian Feature Bridge (Battery Park to Delta Hotel)	5	5
5.17	Delta Hotel Perimeter Walkway Enhancements	5	5
5.18	Clarence Street Enhancements (parking and sidewalk enhancements)	5	5
5.19	Confederation Park	5	5
5.20	Crawford Wharf (Tour Boat Area)	5	5
5.21	Holiday Inn	5	5
5.22	Waterfront Promenade (Princess Street to Queen Street Pier / Parking Lot at Holiday Inn)	5	5
5.23	Queen Street Pier Promenade	5	5
5.24	Wolfe Island Ferry Terminal	5	5

Residents				Visitors	
1C	1D	1E	1F	1G	1H
Proximity to New Growth Areas	Weekday Attraction	After Work and Weekend Attraction	Outdoor Physical Activity	Visitor Attraction	Visitor Experience
Score	Score	Score	Score	Score	Score
3	5	3	5	3	3
3	5	5	1	3	5
3	5	5	5	3	3
3	5	5	5	5	3
3	5	3	5	1	3
3	5	3	1	1	3
3	5	5	1	5	5
3	5	3	1	1	3
3	5	3	1	3	3
3	5	5	1	3	3
3	5	3	5	1	3
3	5	5	5	3	3
3	5	5	5	5	5
3	5	5	5	5	5
3	5	5	5	3	3
3	5	5	1	3	3
3	5	5	5	5	5
3	5	5	1	3	3
3	5	5	1	5	5
3	5	5	1	5	5
3	5	3	5	5	3
3	5	3	5	3	3
3	5	3	1	3	3
3	5	3	1	3	3

Table 78: Focus Area #5 Priority Matrix
Criteria 1A to 1H

Priority Matrix Scoring: Focus Area #5

		Competitive Edge	
		1I	1J
		Attracting Residents	Retaining Residents
		Score	Score
#	Project Name		
5.01	Waterfront Pathway Connection Simcoe St. to West St.	1	3
5.02	West Street Boat Launch	3	5
5.03	An Gorta Mor Park	1	3
5.04	Pump House Steam Museum Pathway Improvements	1	3
5.05	Pathway connecting Pump House Museum to Lower Union (Shipyards Apt)	1	3
5.06	Lower Union Parking Reconfiguration (Marine Museum Ontario St.)	1	1
5.07	Lower Union Pier Enhancements (vacant)	3	1
5.08	Navy Memorial Park	1	1
5.09	Pedestrian Feature Bridge (Lower Union Pier to Marine Museum)	1	1
5.10	Marine Museum Promenade and Park (south of Marine Museum)	1	1
5.11	Gore Street Enhancement and Lookout (foot of Gore St. at Battery)	1	5
5.12	Battery Park	1	1
5.13	Confederation Basin Breakwater	5	5
5.14	Confederation Basin Marina	5	5
5.15	Waterfront Promenade Improvements (William St to Johnson St. behind Landmark)	1	3
5.16	Pedestrian Feature Bridge (Battery Park to Delta Hotel)	1	3
5.17	Delta Hotel Perimeter Walkway Enhancements	1	5
5.18	Clarence Street Enhancements (parking and sidewalk enhancements)	1	3
5.19	Confederation Park	5	5
5.20	Crawford Wharf (Tour Boat Area)	3	3
5.21	Holiday Inn	1	3
5.22	Waterfront Promenade (Princess Street to Queen Street Pier / Parking Lot at Holiday Inn)	1	3
5.23	Queen Street Pier Promenade	1	3
5.24	Wolfe Island Ferry Terminal	3	3

City Image		Connectivity			Access	
1K	1L	2A	2B	2C		
City Image (outside)	City Image (inside)	Existing Connectivity	Proposed Connectivity	Improved Access		
Score	Score	Score	Score	Score	Total Score (out of 60)	%
Criteria Group #1: City Wide Benefit						
1	1	3	1	1	38	69%
3	3	1	1	1	46	84%
1	3	1	1	1	42	76%
5	3	1	1	1	48	87%
1	1	3	1	1	36	65%
1	1	1	1	1	30	55%
5	5	1	1	1	48	87%
1	1	1	1	1	30	55%
1	5	5	5	5	36	65%
1	5	3	1	1	38	69%
1	3	3	1	1	40	73%
1	1	3	1	1	38	69%
5	5	3	5	5	58	105%
5	5	3	1	1	58	105%
1	3	3	1	1	42	76%
5	3	5	5	5	42	76%
5	5	3	1	1	54	98%
5	5	3	1	1	44	80%
5	5	3	1	1	54	98%
3	3	3	1	1	46	84%
5	5	3	1	1	48	87%
3	5	1	1	1	44	80%
3	5	1	1	1	40	73%
5	5	1	1	1	44	80%

Table 79: Focus Area #5 Priority Matrix
Criteria 1I to 2C

Priority Matrix Scoring: Focus Area #5

		Access	
		2D	2E
		Attractiveness	Universal Accessibility
		Score	Score
#	Project Name		
5.01	Waterfront Pathway Connection Simcoe St. to West St.	5	1
5.02	West Street Boat Launch	5	1
5.03	An Gorta Mor Park	5	3
5.04	Pump House Steam Museum Pathway Improvements	5	3
5.05	Pathway connecting Pump House Museum to Lower Union (Shipyards Apt)	5	3
5.06	Lower Union Parking Reconfiguration (Marine Museum Ontario St.)	5	3
5.07	Lower Union Pier Enhancements (vacant)	5	3
5.08	Navy Memorial Park	5	3
5.09	Pedestrian Feature Bridge (Lower Union Pier to Marine Museum)	5	3
5.10	Marine Museum Promenade and Park (south of Marine Museum)	5	3
5.11	Gore Street Enhancement and Lookout (foot of Gore St. at Battery)	5	3
5.12	Battery Park	5	3
5.13	Confederation Basin Breakwater	5	5
5.14	Confederation Basin Marina	5	5
5.15	Waterfront Promenade Improvements (William St to Johnson St. behind Landmark)	5	3
5.16	Pedestrian Feature Bridge (Battery Park to Delta Hotel)	5	3
5.17	Delta Hotel Perimeter Walkway Enhancements	5	3
5.18	Clarence Street Enhancements (parking and sidewalk enhancements)	5	3
5.19	Confederation Park	5	5
5.20	Crawford Wharf (Tour Boat Area)	5	3
5.21	Holiday Inn	5	3
5.22	Waterfront Promenade (Princess Street to Queen Street Pier / Parking Lot at Holiday Inn)	5	3
5.23	Queen Street Pier Promenade	5	3
5.24	Wolfe Island Ferry Terminal	5	3

Enhancements			Implementation Constraints	
2F	2G	2H	3A	3B
Expected Level of Use	Expected Impact	Aging Infrastructure	Partnerships	Approvals
Score	Score	Score	Score	Score
Total Score (out of 40)				
3	3	1	5	5
5	3	1	5	5
3	3	1	5	5
5	3	1	5	5
5	3	1	5	5
5	3	1	5	5
5	5	1	1	3
5	3	1	5	5
5	5	1	3	3
5	5	1	1	3
5	5	1	5	5
3	3	1	5	5
5	5	1	3	3
5	3	1	1	3
5	3	1	5	5
5	3	1	3	3
5	3	1	3	3
5	3	1	5	5
5	3	1	5	5
5	3	1	3	3
5	3	1	3	5
5	3	1	1	3
3	5	1	1	3
3	5	1	3	3

Table 80: Focus Area #5 Priority Matrix
Criteria 2D to 3B

Priority Matrix Scoring: Focus Area #5

Dependencies	
3C	3D

Efficiencies Linked Projects

#	Project Name	Score	Score
5.01	Waterfront Pathway Connection Simcoe St. to West St.	1	5
5.02	West Street Boat Launch	1	5
5.03	An Gorta Mor Park	1	5
5.04	Pump House Steam Museum Pathway Improvements	1	5
5.05	Pathway connecting Pump House Museum to Lower Union (Shipyards Apt)	1	5
5.06	Lower Union Parking Reconfiguration (Marine Museum Ontario St.)	1	5
5.07	Lower Union Pier Enhancements (vacant)	1	5
5.08	Navy Memorial Park	1	5
5.09	Pedestrian Feature Bridge (Lower Union Pier to Marine Museum)	1	5
5.10	Marine Museum Promenade and Park (south of Marine Museum)	1	5
5.11	Gore Street Enhancement and Lookout (foot of Gore St. at Battery)	1	5
5.12	Battery Park	1	5
5.13	Confederation Basin Breakwater	1	5
5.14	Confederation Basin Marina	1	5
5.15	Waterfront Promenade Improvements (William St to Johnson St. behind Landmark)	1	5
5.16	Pedestrian Feature Bridge (Battery Park to Delta Hotel)	1	5
5.17	Delta Hotel Perimeter Walkway Enhancements	1	5
5.18	Clarence Street Enhancements (parking and sidewalk enhancements)	1	5
5.19	Confederation Park	1	5
5.20	Crawford Wharf (Tour Boat Area)	1	5
5.21	Holiday Inn	1	5
5.22	Waterfront Promenade (Princess Street to Queen Street Pier / Parking Lot at Holiday Inn)	1	5
5.23	Queen Street Pier Promenade	1	5
5.24	Wolfe Island Ferry Terminal	1	5

Financial Opportunity				Public Input		Post Card Themes
3E				4A		5A
Financing				Public Support		Access to Nature
Score	Total Score (out of 25)	Best Practices Total Score (out of 65)		Total # of Dots	Group #4: Community Preference (out of 25)	Score
1	17	41.19	18	4	1	
1	17	47.00	17	4	1	
1	17	44.10	31	7	1	
1	17	49.21	14	3	1	
1	17	41.23	7	2	1	
1	17	36.12	35	8	1	
1	11	47.56	8	2	1	
1	17	36.12	25	5	1	
1	13	44.13	8	2	1	
1	11	41.04	7	2	1	
1	17	44.89	16	4	1	
1	17	41.94	17	4	1	
1	13	60.13	25	5	1	
1	11	55.58	36	8	1	
1	17	45.60	5	1	1	
1	13	47.75	34	7	1	
1	13	52.72	18	4	1	
1	17	47.05	28	6	1	
1	17	55.07	18	4	1	
1	13	46.90	64	14	1	
1	15	49.16	22	5	1	
1	11	43.90	12	3	1	
1	11	40.99	6	1	1	
1	13	44.70	1	0	1	

Table 81: Focus Area #5 Priority Matrix
Criteria 3C to 5A

Priority Matrix Scoring: Focus Area #5

Post Card Generated	
5B	5C

More Trails **Places to Relax**

#	Project Name	Score	Score
5.01	Waterfront Pathway Connection Simcoe St. to West St.	1	1
5.02	West Street Boat Launch	1	1
5.03	An Gorta Mor Park	5	1
5.04	Pump House Steam Museum Pathway Improvements	5	1
5.05	Pathway connecting Pump House Museum to Lower Union (Shipyards Apt)	1	1
5.06	Lower Union Parking Reconfiguration (Marine Museum Ontario St.)	1	1
5.07	Lower Union Pier Enhancements (vacant)	1	1
5.08	Navy Memorial Park	5	1
5.09	Pedestrian Feature Bridge (Lower Union Pier to Marine Museum)	1	1
5.10	Marine Museum Promenade and Park (south of Marine Museum)	5	1
5.11	Gore Street Enhancement and Lookout (foot of Gore St. at Battery)	5	1
5.12	Battery Park	5	1
5.13	Confederation Basin Breakwater	5	1
5.14	Confederation Basin Marina	5	1
5.15	Waterfront Promenade Improvements (William St to Johnson St. behind Landmark)	5	1
5.16	Pedestrian Feature Bridge (Battery Park to Delta Hotel)	1	1
5.17	Delta Hotel Perimeter Walkway Enhancements	1	1
5.18	Clarence Street Enhancements (parking and sidewalk enhancements)	1	1
5.19	Confederation Park	5	1
5.20	Crawford Wharf (Tour Boat Area)	1	1
5.21	Holiday Inn	1	1
5.22	Waterfront Promenade (Princess Street to Queen Street Pier / Parking Lot at Holiday Inn)	1	1
5.23	Queen Street Pier Promenade	1	1
5.24	Wolfe Island Ferry Terminal	1	1

[illegible]

Table 82: Focus Area #5 Priority Matrix
Criteria 5B to 5J

Priority Matrix Scoring: Focus Area #5

		Other Popular Themes	
		5K	5L
		All Season	Built Heritage
#	Project Name	Score	Score
5.01	Waterfront Pathway Connection Simcoe St. to West St.	5	1
5.02	West Street Boat Launch	3	1
5.03	An Gorta Mor Park	5	1
5.04	Pump House Steam Museum Pathway Improvements	5	5
5.05	Pathway connecting Pump House Museum to Lower Union (Shipyards Apt)	5	1
5.06	Lower Union Parking Reconfiguration (Marine Museum Ontario St.)	5	1
5.07	Lower Union Pier Enhancements (vacant)	5	1
5.08	Navy Memorial Park	5	1
5.09	Pedestrian Feature Bridge (Lower Union Pier to Marine Museum)	5	1
5.10	Marine Museum Promenade and Park (south of Marine Museum)	5	5
5.11	Gore Street Enhancement and Lookout (foot of Gore St. at Battery)	5	1
5.12	Battery Park	5	1
5.13	Confederation Basin Breakwater	5	1
5.14	Confederation Basin Marina	5	1
5.15	Waterfront Promenade Improvements (William St to Johnson St. behind Landmark)	5	1
5.16	Pedestrian Feature Bridge (Battery Park to Delta Hotel)	5	1
5.17	Delta Hotel Perimeter Walkway Enhancements	5	1
5.18	Clarence Street Enhancements (parking and sidewalk enhancements)	5	1
5.19	Confederation Park	5	1
5.20	Crawford Wharf (Tour Boat Area)	5	1
5.21	Holiday Inn	5	1
5.22	Waterfront Promenade (Princess Street to Queen Street Pier / Parking Lot at Holiday Inn)	5	1
5.23	Queen Street Pier Promenade	5	1
5.24	Wolfe Island Ferry Terminal	5	1

Total Score (out of 60)	Public Opinion Total Score	TOTAL SCORE (out of 100)
32	13	54.46
34	14	60.64
40	18	62.54
40	15	63.94
32	11	52.10
32	17	53.11
32	11	58.64
36	16	52.09
32	11	55.22
40	13	54.23
36	14	58.89
36	14	56.16
36	16	76.10
40	20	75.12
36	12	57.19
32	17	64.52
32	13	65.99
32	15	62.51
36	14	69.51
32	23	70.24
32	14	63.30
32	12	55.86
32	11	51.64
32	10	54.25

*Table 83: Focus Area #5 Priority Matrix
Criteria 5K to 5L and total score*

Priority Matrix Scoring: Focus Area #6

Residents	
1A	1B
Proximity to Population	Proximity to Locations of Dense Population

#	Project Name	Score	Score
6.01	Wolfe Island Ferry to LaSalle Causeway (sidewalk improvements)	3	3
6.02	RMC Waterfront Promenade (around edge of RMC)	3	3
6.03	Fort Henry Waterfront Pathway (around Navy Bay)	3	3
6.04	Fort Henry Walkways (by Fort on point)	3	3
6.05	Deadmans' Bay Pathway Martello to DND lands)	3	3
6.06	Arrowhead Beach Park	3	3
6.07	Pathway connecting Arrowhead Beach to LaSalle Blvd	3	3
6.08	Ravensview Park	1	1
6.09	Pathway connecting LaSalle Blvd to McKnight Rd	1	1
6.10	Sibbit Park	1	1
6.11	Pathway connecting Sibbit Ave to Greensboro Ave	1	1
6.12	Faircrest Park	1	1
6.13	Riverside Waterside Park	1	1
6.14	Pathway connecting Concord Dr. to King Pitt Rd	1	1
6.15	Pathway connecting Glenn Lawrence Cres. to Milton Ave (through woodlot)	1	1
6.16	Milton Connection (vacant subdivision lot / woodlot)	1	1
6.17	Milton Lookout Park	1	1
6.18	Esplanade Park	1	1
6.19	Fishing dock - Abbey Dawn and Highway 2 (north east side)	1	1

Residents				Visitors	
1C	1D	1E	1F	1G	1H
Proximity to New Growth Areas	Weekday Attraction	After Work and Weekend Attraction	Outdoor Physical Activity	Visitor Attraction	Visitor Experience
Score	Score	Score	Score	Score	Score
5	5	1	5	1	1
5	5	5	5	5	5
5	5	5	5	5	5
5	5	5	5	5	5
5	5	3	5	5	5
5	5	3	5	3	3
5	5	1	5	1	1
5	1	3	5	1	3
5	1	1	5	1	1
5	1	3	5	1	3
5	1	1	5	1	1
5	1	3	5	1	3
5	1	3	5	1	3
5	1	1	5	1	3
5	1	1	5	1	3
5	1	3	5	1	3
5	1	3	5	1	3
5	1	3	5	1	3

Table 84: Focus Area #6 Priority Matrix
Criteria 1A to 1H

Priority Matrix Scoring: Focus Area #6

		Competitive Edge	
		1I	1J
		Attracting Residents	Retaining Residents
		Score	Score
#	Project Name		
6.01	Wolfe Island Ferry to LaSalle Causeway (sidewalk improvements)	1	1
6.02	RMC Waterfront Promenade (around edge of RMC)	3	5
6.03	Fort Henry Waterfront Pathway (around Navy Bay)	3	5
6.04	Fort Henry Walkways (by Fort on point)	3	5
6.05	Deadmans' Bay Pathway Martello to DND lands)	3	5
6.06	Arrowhead Beach Park	3	3
6.07	Pathway connecting Arrowhead Beach to LaSalle Blvd	1	3
6.08	Ravensview Park	1	3
6.09	Pathway connecting LaSalle Blvd to McKnight Rd	1	3
6.10	Sibbit Park	1	1
6.11	Pathway connecting Sibbit Ave to Greensboro Ave	1	3
6.12	Faircrest Park	1	1
6.13	Riverside Waterside Park	1	3
6.14	Pathway connecting Concord Dr. to King Pitt Rd	1	3
6.15	Pathway connecting Glenn Lawrence Cres. to Milton Ave (through woodlot)	1	3
6.16	Milton Connection (vacant subdivision lot / woodlot)	1	3
6.17	Milton Lookout Park	1	3
6.18	Esplanade Park	1	3
6.19	Fishing dock - Abbey Dawn and Highway 2 (north east side)	3	3

City Image		Connectivity			Access	
1K	1L	2A	2B	2C		
City Image (outside)	City Image (inside)	Existing Connectivity	Proposed Connectivity	Improved Access		
Score	Score	Score	Score	Score	Total Score (out of 60)	%
Criteria Group #1: City Wide Benefit						
1	3	30	55%	21.82	3	1
5	5	54	98%	39.27	3	1
5	5	54	98%	39.27	3	1
5	5	54	98%	39.27	3	1
5	3	50	91%	36.36	3	1
1	1	38	69%	27.64	3	1
1	1	30	55%	21.82	1	5
1	1	26	47%	18.91	3	1
1	1	22	40%	16.00	1	5
1	1	24	44%	17.45	3	1
1	1	22	40%	16.00	1	5
1	1	24	44%	17.45	3	1
1	1	26	47%	18.91	3	1
1	1	24	44%	17.45	1	5
1	1	24	44%	17.45	1	5
1	1	24	44%	17.45	1	5
1	1	26	47%	18.91	3	1
1	1	26	47%	18.91	3	1
3	1	30	55%	21.82	3	1

Table 85: Focus Area #6 Priority Matrix
Criteria 1I to 2C

Priority Matrix Scoring: Focus Area #6

Access	
2D	2E

Attractiveness	Universal Accessibility
----------------	-------------------------

#	Project Name	Score	Score
6.01	Wolfe Island Ferry to LaSalle Causeway (sidewalk improvements)	5	3
6.02	RMC Waterfront Promenade (around edge of RMC)	5	3
6.03	Fort Henry Waterfront Pathway (around Navy Bay)	5	3
6.04	Fort Henry Walkways (by Fort on point)	5	3
6.05	Deadmans' Bay Pathway Martello to DND lands)	5	3
6.06	Arrowhead Beach Park	5	3
6.07	Pathway connecting Arrowhead Beach to LaSalle Blvd	5	3
6.08	Ravensview Park	5	3
6.09	Pathway connecting LaSalle Blvd to McKnight Rd	5	3
6.10	Sibbit Park	5	3
6.11	Pathway connecting Sibbit Ave to Greensboro Ave	5	3
6.12	Faircrest Park	5	3
6.13	Riverside Waterside Park	5	3
6.14	Pathway connecting Concord Dr. to King Pitt Rd	5	3
6.15	Pathway connecting Glenn Lawrence Cres. to Milton Ave (through woodlot)	5	3
6.16	Milton Connection (vacant subdivision lot / woodlot)	5	3
6.17	Milton Lookout Park	5	3
6.18	Esplanade Park	5	3
6.19	Fishing dock - Abbey Dawn and Highway 2 (north east side)	5	3

Enhancements			Implementation Constraints	
2F	2G	2H	3A	3B
Expected Level of Use	Expected Impact	Aging Infrastructure	Partnerships	Approvals
Score	Score	Score	Score	Score
3	3	1	20	3
5	5	1	24	3
5	5	1	24	3
5	5	1	24	3
3	3	1	20	3
3	3	1	20	3
3	3	1	26	3
3	3	1	20	5
3	3	1	26	1
3	3	1	20	5
3	3	1	26	1
3	3	1	20	5
3	3	1	20	5
3	3	1	26	1
3	3	1	26	1
3	3	1	20	5
3	3	1	24	5
3	5	1	22	5

Table 86: Focus Area #6 Priority Matrix
Criteria 2D to 3B

Priority Matrix Scoring: Focus Area #6

Dependencies	
3C	3D

Efficiencies Linked Projects

#	Project Name	Score	Score
6.01	Wolfe Island Ferry to LaSalle Causeway (sidewalk improvements)	1	5
6.02	RMC Waterfront Promenade (around edge of RMC)	1	5
6.03	Fort Henry Waterfront Pathway (around Navy Bay)	1	5
6.04	Fort Henry Walkways (by Fort on point)	1	5
6.05	Deadmans' Bay Pathway Martello to DND lands)	1	5
6.06	Arrowhead Beach Park	1	5
6.07	Pathway connecting Arrowhead Beach to LaSalle Blvd	1	5
6.08	Ravensview Park	1	5
6.09	Pathway connecting LaSalle Blvd to McKnight Rd	1	5
6.10	Sibbit Park	1	5
6.11	Pathway connecting Sibbit Ave to Greensboro Ave	1	5
6.12	Faircrest Park	1	5
6.13	Riverside Waterside Park	1	5
6.14	Pathway connecting Concord Dr. to King Pitt Rd	1	5
6.15	Pathway connecting Glenn Lawrence Cres. to Milton Ave (through woodlot)	1	5
6.16	Milton Connection (vacant subdivision lot / woodlot)	1	5
6.17	Milton Lookout Park	1	5
6.18	Esplanade Park	1	5
6.19	Fishing dock - Abbey Dawn and Highway 2 (north east side)	1	5

Financial Opportunity				Public Input		Post Card Themes
3E				4A		5A
Financing				Public Support		Access to Nature
Score	Total Score (out of 25)	Best Practices Total Score (out of 65)		Total # of Dots	Group #4: Community Preference (out of 25)	Score
1	13	34.52	1	0	1	
1	13	53.47	6	1	1	
1	13	53.47	22	5	1	
1	13	53.47	18	4	1	
1	13	49.06	11	2	5	
1	13	40.34	0	0	5	
1	13	36.77	6	1	5	
1	17	33.21	5	1	1	
1	9	29.35	8	2	5	
1	17	31.75	4	1	1	
1	11	30.15	4	1	5	
1	17	31.75	6	1	1	
1	17	33.21	12	3	1	
1	11	31.60	6	1	5	
1	11	31.60	7	2	5	
1	11	31.60	7	2	1	
1	17	33.21	14	3	1	
1	17	34.71	10	2	1	
1	17	36.87	8	2	1	

Table 87: Focus Area #6 Priority Matrix
Criteria 3C to 5A

Priority Matrix: Focus Area #6

Post Card Generated	
5B	5C

More Trails **Places to Relax**

#	Project Name	Score	Score
6.01	Wolfe Island Ferry to LaSalle Causeway (sidewalk improvements)	1	5
6.02	RMC Waterfront Promenade (around edge of RMC)	1	5
6.03	Fort Henry Waterfront Pathway (around Navy Bay)	1	5
6.04	Fort Henry Walkways (by Fort on point)	1	5
6.05	Deadmans' Bay Pathway Martello to DND lands)	1	5
6.06	Arrowhead Beach Park	5	5
6.07	Pathway connecting Arrowhead Beach to LaSalle Blvd	1	5
6.08	Ravensview Park	1	5
6.09	Pathway connecting LaSalle Blvd to McKnight Rd	1	5
6.10	Sibbit Park	1	5
6.11	Pathway connecting Sibbit Ave to Greensboro Ave	1	5
6.12	Faircrest Park	1	5
6.13	Riverside Waterside Park	1	5
6.14	Pathway connecting Concord Dr. to King Pitt Rd	1	5
6.15	Pathway connecting Glenn Lawrence Cres. to Milton Ave (through woodlot)	1	5
6.16	Milton Connection (vacant subdivision lot / woodlot)	1	5
6.17	Milton Lookout Park	1	5
6.18	Esplanade Park	1	5
6.19	Fishing dock - Abbey Dawn and Highway 2 (north east side)	1	5

Themes		Other Popular Themes				
5D	5E	5F	5G	5H	5I	5J
Access to Swimming	Connections Along the Water	Improved Land Access	Improved Water Access	Variety of Interests	Variety of Users	Environmental Stewardship
Score	Score	Score	Score	Score	Score	Score
1	5	5	1	1	5	1
1	5	5	1	5	5	3
1	5	5	1	5	5	3
1	5	5	1	5	5	3
1	5	5	5	5	5	3
5	5	5	1	5	5	3
1	5	5	1	5	5	3
1	5	5	1	5	5	3
1	5	5	1	5	5	3
1	5	5	5	5	5	3
1	5	5	1	5	5	3
1	5	5	1	5	5	3
1	5	5	1	5	5	3
1	5	5	5	5	5	3
1	5	5	1	5	5	3
1	5	5	1	5	5	3
1	5	5	1	5	5	3
1	5	5	5	5	5	3
1	5	5	5	5	3	3

Table 88: Focus Area #6 Priority Matrix
Criteria 5B to 5J

Priority Matrix Scoring: Focus Area #6

Other Popular Themes	
5K	5L

#	Project Name	All Season	Built Heritage
		Score	Score
6.01	Wolfe Island Ferry to LaSalle Causeway (sidewalk improvements)	5	3
6.02	RMC Waterfront Promenade (around edge of RMC)	5	3
6.03	Fort Henry Waterfront Pathway (around Navy Bay)	5	3
6.04	Fort Henry Walkways (by Fort on point)	5	3
6.05	Deadmans' Bay Pathway Martello to DND lands)	5	3
6.06	Arrowhead Beach Park	5	3
6.07	Pathway connecting Arrowhead Beach to LaSalle Blvd	5	3
6.08	Ravensview Park	5	3
6.09	Pathway connecting LaSalle Blvd to McKnight Rd	5	3
6.10	Sibbit Park	5	3
6.11	Pathway connecting Sibbit Ave to Greensboro Ave	5	3
6.12	Faircrest Park	5	3
6.13	Riverside Waterside Park	5	3
6.14	Pathway connecting Concord Dr. to King Pitt Rd	5	3
6.15	Pathway connecting Glenn Lawrence Cres. to Milton Ave (through woodlot)	5	3
6.16	Milton Connection (vacant subdivision lot / woodlot)	5	3
6.17	Milton Lookout Park	5	3
6.18	Esplanade Park	5	3
6.19	Fishing dock - Abbey Dawn and Highway 2 (north east side)	3	3

Total Score (out of 60)	Public Opinion Total Score	TOTAL SCORE (out of 100)
34	10	44.65
40	13	66.45
40	16	69.95
40	16	69.08
48	16	65.47
52	15	55.50
44	14	50.91
44	14	47.14
44	15	43.93
48	15	46.63
44	14	43.86
44	14	45.90
48	17	49.83
44	14	45.75
44	14	45.97
44	14	45.97
44	16	49.10
48	16	50.90
40	13	50.28

*Table 89: Focus Area #6 Priority Matrix
Criteria 5K to 5L and total score*

Priority Matrix Results: Focus Area #1

#	Project
1.01	LaSalle Causeway - enhanced pedestrian access / crossing
1.02	Create connection from Causeway to Anglin Lot (@ DND Lands)
1.03	Sidewalk from LaSalle Causeway to King St.
1.04	Enhanced Connection from Armes Square to Anglin Bay
1.05	Anglin Parking Lot Connection (buffered pedestrian route - shore edge)
1.06	Wellington Street Sidewalk (both sides Bay Street to Douglas R. Fluhrer Park)
1.07	Anglin Bay Bridge (From Frontenac Village to Douglas Fluhrer R. Park)
1.08	Douglas R. Fluhrer Park
1.09	Molly Brant Park (From north end of Douglas R. Fluhrer Park to Molly Brant Point)
1.10	Emma Martin Park
1.11	Public Works Lands Connection Lookout (By River St. pumping station)
1.12	Tannery Lands (River Edge)
1.13	Land Bridge connection from Tannery to Belle Park
1.14	Belle Park Pathway Improvements (periphery)
1.15	Belle Park Lookout
1.16	Village Apartments Pathway Improvements (waterside path)
1.17	Third Crossing Landscape Improvements (at future bridge abutments)
1.18	Newmarket Lane Pathway Improvements (connect to outer station lookout)
1.19	Railway Underpass Pathway Connection
1.20	Create Connection (East of Montreal) from Underpass to Greer (below escarpment west of CN tracks)
1.21	On Street Connection from Greer to Sutherland Dr. Park
1.22	Sutherland Drive Park
1.23	Pathway Connecting Sutherland Dr. Park to Highway 401 Crossing (edge of escarpment)

Technical 65%		Public Opinion 35%		Total 100%	
Technical (Out of 65%)	Priority Ranking	Public Opinion (Out of 35%)	Priority Ranking	TOTAL SCORE (Out of 100)	Priority Ranking
35	66	11	94	45	82
33	74	12	73	46	80
31	92	11	87	42	93
29	106	10	102	39	106
29	108	8	126	37	118
34	73	10	98	44	89
38	54	10	97	48	69
54	7	23	5	77	3
48	21	18	12	66	18
41	50	18	13	59	37
29	106	10	95	39	101
52	15	17	14	69	12
40	52	17	18	56	42
45	34	17	15	62	29
38	55	15	42	52	53
28	117	11	81	39	103
36	61	15	34	51	57
30	96	14	57	44	86
29	104	10	102	39	102
29	103	10	95	40	100
25	132	7	132	32	134
28	114	10	102	38	113
28	119	10	102	38	114

Table 90: Priority Matrix Results Summary for Focus Area #1

#	Project
1.24	West 401 Crossing (at Montreal Street)
1.25	Carpool Lot to Battersea South Pathway (Montreal / 401)
1.26	On Road link via Kingston Mills Rd. to Locks
1.27	Kingston Mills Locks Improvements
1.28	Pathway connection south of Kingston Mills Road to 401 (east side canal)
1.29	East 401 Crossing
1.30	Pathway Connections south of 401 (east side to quarry)
1.31	MacLean Trails Park
1.32	Lilla Burke Park
1.33	Former Rideau Marina Redevelopment
1.34	100 Foot Park
1.35	Highway 15 Onroad Link from 100 Foot Park to Craftsman Blvd
1.36	Highway 15 Roadside Lookout (north of Barriefield) on west side @Craftsman
1.37	Green Bay Open Space (north of James St. at point)

Technical 65%		Public Opinion 35%		Total 100%	
Technical (Out of 65%)	Priority Ranking	Public Opinion (Out of 35%)	Priority Ranking	TOTAL SCORE (Out of 100)	Priority Ranking
24	133	7	130	32	135
24	133	7	127	32	133
21	137	7	127	28	137
35	65	13	66	48	67
34	69	14	47	49	66
26	129	8	124	34	130
37	56	14	55	51	58
39	53	16	24	55	46
30	97	11	82	41	97
37	59	12	78	48	68
29	111	15	40	43	90
32	88	10	100	42	95
30	99	9	116	39	104
32	85	13	66	45	83

Table 91: Priority Matrix Results Summary for Focus Area #1
(continued)

Priority Matrix Results: Focus Area #2

#	Project
2.01	Kingston Mills Locks North Dock
2.02	Southern Colonel By Lake Waterfront Path (east of Eden Valley Open Space)
2.03	Northern Colonel By Lake Waterfront Path (south of Edenwood Park)
2.04	Edenwood Park
2.05	Aragon Road Boat Launch (roadside at Colonel By Lake)
2.06	Cecil & Wilma Graham Park (Aragon Rd)
2.07	Jarvis Open Space (end of Jarvis Road)
2.08	Colonel By Park
2.09	Lookout on Treasure Island Causeway (at causeway)
2.10	Madoma Community Centre
2.11	Channel View Park
2.12	English Landing Park
2.13	Grass Creek Park
2.14	Rawsons Point
2.15	Riverwood Park
2.16	Little Collins Lake Small Craft Access (east side - Perth Rd)
2.17	Loughborough Lake Boat Launch (winter fishing access + snowmobile access)

Technical 65%		Public Opinion 35%		Total 100%	
Technical (Out of 65%)	Priority Ranking	Public Opinion (Out of 35%)	Priority Ranking	TOTAL SCORE (Out of 100)	Priority Ranking
26	128	9	115	36	123
28	115	11	90	39	107
29	102	11	90	40	99
24	135	10	101	34	129
32	86	7	133	39	110
43	42	20	6	64	23
33	79	10	110	42	94
32	81	10	107	42	96
23	136	7	130	30	136
29	111	7	127	36	121
30	100	11	83	41	98
29	109	10	107	39	112
48	21	20	7	68	15
29	113	11	93	39	105
27	120	9	113	37	117
30	101	6	137	35	125
32	80	6	136	39	111

Table 92: Priority Matrix Results Summary for Focus Area #2

Priority Matrix Results: Focus Area #3

#	Project
3.01	Arthur Lower Park (at Homeward Ave and Bath Rd)
3.02	Collins Bay Open Space (at Rankin Cres and Bath Rd.)
3.03	Collins Bay Boat Launch (Phase 2)
3.04	Collins Bay Road Right of Way Waterfront Access
3.05	Bath Road Bridge Connection (Bayridge Drive)
3.06	Coverdale Drive On Street Pathway (south side)
3.07	Rotary Park
3.08	Lemoine Conservation Area
3.09	Waterfront Pathway Connection -From Lemoine Point to Front Rd.
3.10	Front Rd Path on Street Pathway (Lemoine to Smugglers Cove)
3.11	Smugglers Cove (Old Front Rd. and Front Rd - west end)
3.12	Old Front Rd Path on Street Pathway
3.13	Horse Bay Parkette (at Bayridge and Front Rd.)
3.14	Lakeland Point Drive on Street Pathway
3.15	Reddendale On Road Path (Front Rd to Patterson Park)
3.16	Private Park (Between 39 and 41 Lakeland Point Drive)
3.17	Everitt Park
3.18	Private Park (18 Lakeshore Blvd) "No Dog" Park
3.19	Crerar Park
3.20	Patterson Park
3.21	Sand Bay (Behind Invista)
3.22	Cataraqui Bay Breakwater
3.23	Front Road Causeway (west end by Invista)
3.24	Little Cataraqui Marsh Pathway West (CSC Lands)
3.25	Greenview Drive Pathway Connection (By apartments)
3.26	Rideau Trail: Little Cataraqui Marsh Pathway (east)
3.27	Elevator Bay Pier (south end)

Technical 65%		Public Opinion 35%		Total 100%	
Technical (Out of 65%)	Priority Ranking	Public Opinion (Out of 35%)	Priority Ranking	TOTAL SCORE (Out of 100)	Priority Ranking
29	109	10	106	39	109
30	94	8	119	39	108
45	34	8	125	53	52
27	122	7	135	34	128
28	115	8	122	36	120
27	125	8	122	35	127
42	44	14	44	56	41
45	33	16	27	62	31
46	31	16	25	62	30
27	120	10	109	37	116
25	130	7	134	32	132
27	125	8	119	35	126
31	93	12	76	43	91
27	122	9	117	36	119
27	125	9	112	36	122
27	124	8	121	36	124
34	70	12	80	45	81
28	118	9	113	37	115
34	70	14	55	48	70
43	43	15	38	57	39
54	8	16	20	71	8
25	131	9	118	33	131
30	94	12	71	43	92
32	87	15	32	47	72
33	75	11	83	44	85
32	81	14	49	46	76
34	72	12	76	46	79

Table 93: Priority Matrix Results Summary for Focus Area #3

Priority Matrix Results: Focus Area #4

#	Project
4.01	Improved Connection through Providence Continuing Care Centre (Behind Hospital)
4.02	Transport Canada Coal Dock (at Lakewatch Lane)
4.03	Portsmouth Olympic Harbour
4.04	Kingston Penitentiary (Foot of Sir John A. Macdonald Blvd)
4.05	King Street West Sidewalk (South Side from Penitentiary to Breakwater Park)
4.06	Sidewalk in Alwington Place King St. to CSC St. Helens)
4.07	Correction Canada Property - Pathway link Alwington to Tett (through St. Helens)
4.08	J.K. Tett Centre Pathway link
4.09	Breakwater Park (2013 Master Plan)
4.10	Kingston Central Heating Plant (south side)
4.11	Macdonald Park
4.12	Richardson Beach
4.13	On Road Pathway - Emily St. to Simcoe Street via King

Technical 65%		Public Opinion 35%		Total 100%	
Technical (Out of 65%)	Priority Ranking	Public Opinion (Out of 35%)	Priority Ranking	TOTAL SCORE (Out of 100)	Priority Ranking
47	28	16	23	63	25
36	64	13	70	49	65
54	9	15	36	69	14
44	41	24	3	68	16
52	14	20	9	72	7
37	57	14	59	51	61
48	24	12	74	60	33
48	20	14	61	62	28
59	2	29	2	88	2
45	32	12	72	58	38
57	4	20	8	76	4
58	3	30	1	88	1
49	19	11	89	59	34

Table 94: Priority Matrix Results Summary for Focus Area #4

Priority Matrix Results: Focus Area #5

#	Project
5.01	Waterfront Pathway Connection Simcoe St. to West St.
5.02	West Street Boat Launch
5.03	An Gorta Mor Park
5.04	Pump House Steam Museum Pathway Improvements
5.05	Pathway connecting Pump House Museum to Lower Union (Shipyards Apt)
5.06	Lower Union Parking Reconfiguration (Marine Museum Ontario St.)
5.07	Lower Union Pier Enhancements (vacant)
5.08	Navy Memorial Park
5.09	Pedestrian Feature Bridge (Lower Union Pier to Marine Museum)
5.10	Marine Museum Promenade and Park (south of Marine Museum)
5.11	Gore Street Enhancement and Lookout (foot of Gore St. at Battery)
5.12	Battery Park
5.13	Confederation Basin Breakwater
5.14	Confederation Basin Marina
5.15	Waterfront Promenade Improvements (William St to Johnson St. behind Landmark)
5.16	Pedestrian Feature Bridge (Battery Park to Delta Hotel)
5.17	Delta Hotel Perimeter Walkway Enhancements
5.18	Clarence Street Enhancements (parking and sidewalk enhancements)
5.19	Confederation Park
5.20	Crawford Wharf (Tour Boat Area)
5.21	Holiday Inn
5.22	Waterfront Promenade (Princess Street to Queen Street Pier / Parking Lot at Holiday Inn)
5.23	Queen Street Pier Promenade
5.24	Wolfe Island Ferry Terminal

Technical 65%		Public Opinion 35%		Total 100%	
Technical (Out of 65%)	Priority Ranking	Public Opinion (Out of 35%)	Priority Ranking	TOTAL SCORE (Out of 100)	Priority Ranking
41	47	13	64	54	48
47	27	14	61	61	32
44	39	18	11	63	26
49	16	15	38	64	22
41	46	11	88	52	54
36	62	17	16	53	51
48	25	11	83	59	36
36	62	16	28	52	55
44	38	11	83	55	47
41	48	13	66	54	50
45	34	14	54	59	35
42	44	14	48	56	43
60	1	16	28	76	5
56	5	20	10	75	6
46	30	12	79	57	40
48	23	17	17	65	21
53	13	13	64	66	19
47	26	15	32	63	27
55	6	14	43	70	11
47	29	23	4	70	9
49	17	14	49	63	24
44	40	12	74	56	44
41	49	11	92	52	56
45	37	10	110	54	49

Table 95: Priority Matrix Results Summary for Focus Area #5

Priority Matrix Results: Focus Area #6

#	Project
6.01	Wolfe Island Ferry to LaSalle Causeway (sidewalk improvements)
6.02	RMC Waterfront Promenade (around edge of RMC)
6.03	Fort Henry Waterfront Pathway (around Navy Bay)
6.04	Fort Henry Walkways (by Fort on point)
6.05	Deadmans' Bay Pathway Martello to DND lands)
6.06	Arrowhead Beach Park
6.07	Pathway connecting Arrowhead Beach to LaSalle Blvd
6.08	Ravensview Park
6.09	Pathway connecting LaSalle Blvd to McKnight Rd
6.10	Sibbit Park
6.11	Pathway connecting Sibbit Ave to Greensboro Ave
6.12	Faircrest Park
6.13	Riverside Waterside Park
6.14	Pathway connecting Concord Dr. to King Pitt Rd
6.15	Pathway connecting Glenn Lawrence Cres. to Milton Ave (through woodlot)
6.16	Milton Connection (vacant subdivision lot / woodlot)
6.17	Milton Lookout Park
6.18	Esplanade Park
6.19	Fishing dock - Abbey Dawn and Highway 2 (north east Side)

Technical 65%		Public Opinion 35%		Total 100%	
Technical (Out of 65%)	Priority Ranking	Public Opinion (Out of 35%)	Priority Ranking	TOTAL SCORE (Out of 100)	Priority Ranking
35	68	10	98	45	84
53	10	13	69	66	17
53	10	16	20	70	10
53	10	16	31	69	13
49	18	16	22	65	20
40	51	15	35	56	45
37	59	14	49	51	59
33	76	14	57	47	71
29	105	15	41	44	87
32	81	15	37	47	73
30	98	14	60	44	88
32	81	14	49	46	76
33	76	17	18	50	63
32	89	14	49	46	78
32	89	14	44	46	74
32	89	14	44	46	74
33	76	16	30	49	64
35	67	16	25	51	60
37	57	13	63	50	62

Table 96: Priority Matrix Results Summary for Focus Area #6

