

# WELCOME



## PUBLIC OPEN HOUSE, SPEAKER AND WORKSHOP

November 2, 2016 - 6:00-9:00pm

- |           |  |
|-----------|--|
| 6:00-7:00 | Drop-In Open House                                   |
| 7:00-7:45 | Speaker - Johan Diepens,<br>Founder and CEO, Mobycon |
| 7:45-9:00 | Workshop Discussions                                 |





# What is the Study About



## About

The City is developing its first Active Transportation Master Plan (ATMP) called Walk 'n' Roll Kingston to address the active transportation needs of the community. The plan will be aimed at achieving the target of a 20 per cent active transportation mode share for peak travel times by 2034 as directed by Council.

## What is Active Transportation?

Active transportation refers to any human powered mode of travel including walking, cycling, in-line skating, skateboarding, running and getting around by wheelchair.

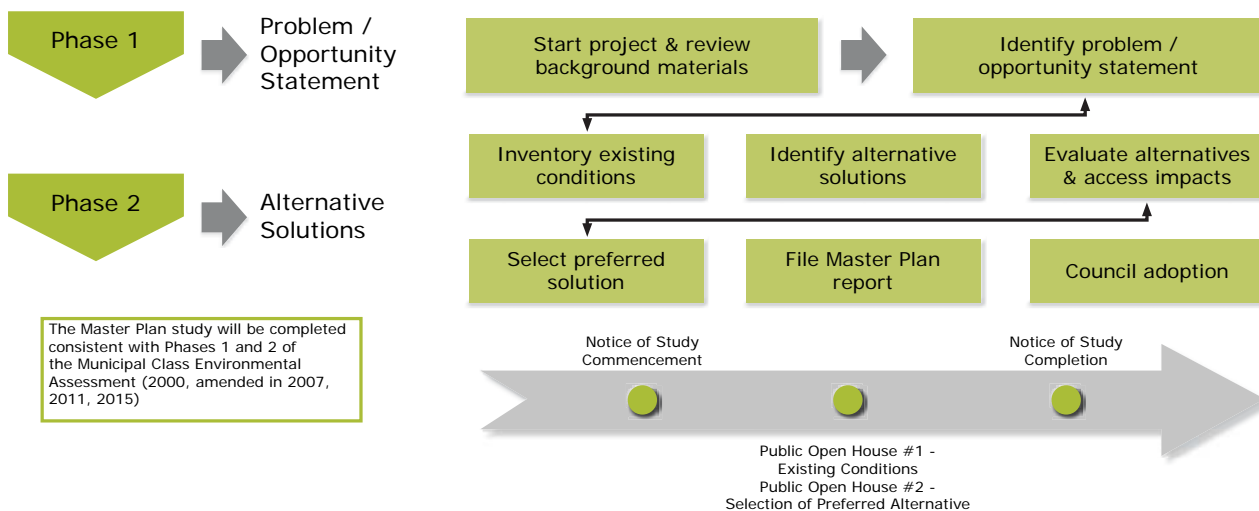


## Plan Objectives

- A comprehensive network
- Corridors that encourage the use of walking and cycling
- Networks that integrate walking and cycling with transit and carpooling
- Facilities that encourage recreational trips and tourism
- Programs that reflect the objectives of the plan and the City

## Municipal Class EA Process

The ATMP is being development in accordance with the Maser Plans section of the requirements within the Municipal Class EA. The process to be undertaken is shown below.



## Planning Context

The City has a number of policies in place that support active transportation. Highlights from these policies include:

- Active transportation facilities and access to be included in all development
- Improved connectivity, enhanced pedestrian - friendly streetscapes, and facilities / road cross sections to support cycling
- Promote active living
- Create a sustainable community



## Best Practices

A review of best practices found **six key themes** to consider in the development of Walk 'n' Roll Kingston:

- Design for Users
- Connected Network
- Documented Decision Making
- Complete Streets
- Sound Engineering
- Integration and Coordination

Walk 'n' Roll Kingston will incorporate technical guidelines including:





# What are your ideas for helping get Kingston on the move



Please place a check mark next to the word(s) you feel are important. If there are other key words you think should be considered please include them at the bottom of the list.

<b>Accessible</b>		<b>Continuous</b>	
<b>Fun</b>		<b>Diversity</b>	
<b>Easy Choice</b>		<b>Equitable</b>	
<b>Inclusive</b>		<b>Convenient</b>	
<b>Safe</b>		<b>Comfortable</b>	
<b>Functional for Work</b>		<b>All Ages</b>	
<b>Connected</b>		<b>Variety</b>	
<b>All Seasons</b>		<b>Inspiration</b>	

Others:



# What are your ideas for helping get Kingston on the move



## How can we get Kingston on the move?

Please share your thoughts and ideas here:



# Marketing, Promotion & Outreach of Active Transportation



Please share your ideas for getting Kingston on the Move. Many of these are underway. What ideas do you have?

## Marketing

1. Explore incentives to encourage parents to walk / bike with children to school

## Promotion

1. Implement regulatory and wayfinding signs on all bike routes

## Outreach

1. Work with school boards to develop an Active and Safe Routes to School program

2. Develop information targeted to school age children and seniors and distribute at key locations

2. Explore bike share options

2. "Profile raising" walking and cycling events

3. Work with police to improve enforcement and education

3. Develop and maintain an online hub for walking and cycling information

3. Develop Kingston specific AT applications

Other ideas:



# How will Kingston's future network be developed



Kingston's active transportation network is a system of connected routes that enables residents to travel around Kingston by active and accessible modes.

To develop this network, this project established a ten step network development process. The process is outlined below.

## Network Development Process

- 1 Map Existing and Previously Proposed Routes
- 2 Determine Route Selection Criteria
- 3 Conduct Initial Field Review
- 4 Identify Additional Network Gaps
- 5 Prepare Draft Network "Concept"
- 6 Review Network Concept with City / Stakeholders / Public
- 7 Refine and Confirm Network Concept through Field Investigations
- 8 Select and Map Preferred Facility Types by Route Segment
- 9 Prepare Pedestrian Network Concept / Identify Missing Sidewalk Links
- 10 Network Phasing (Cycling / Trails / Missing Sidewalk Links) & Costing by Phase



We are here



## Route Selection Criteria

The draft route selection criteria have been developed for the Kingston ATMP through the review of criteria used in other ATMPs as well as by the criteria outlined in Ontario Traffic Manual (OTM) Book 18: Cycling Facilities. The criteria include the following:

Accessible (All Ages)	Connected & Direct	Safety & Comfort
Complete Streets	Increased Travel by AT Modes	Cost Effective
Supports Local Business / Tourism	Safer Routes to School	Diverse Network (On and Off Road)

Are there other criteria you believe should be considered?



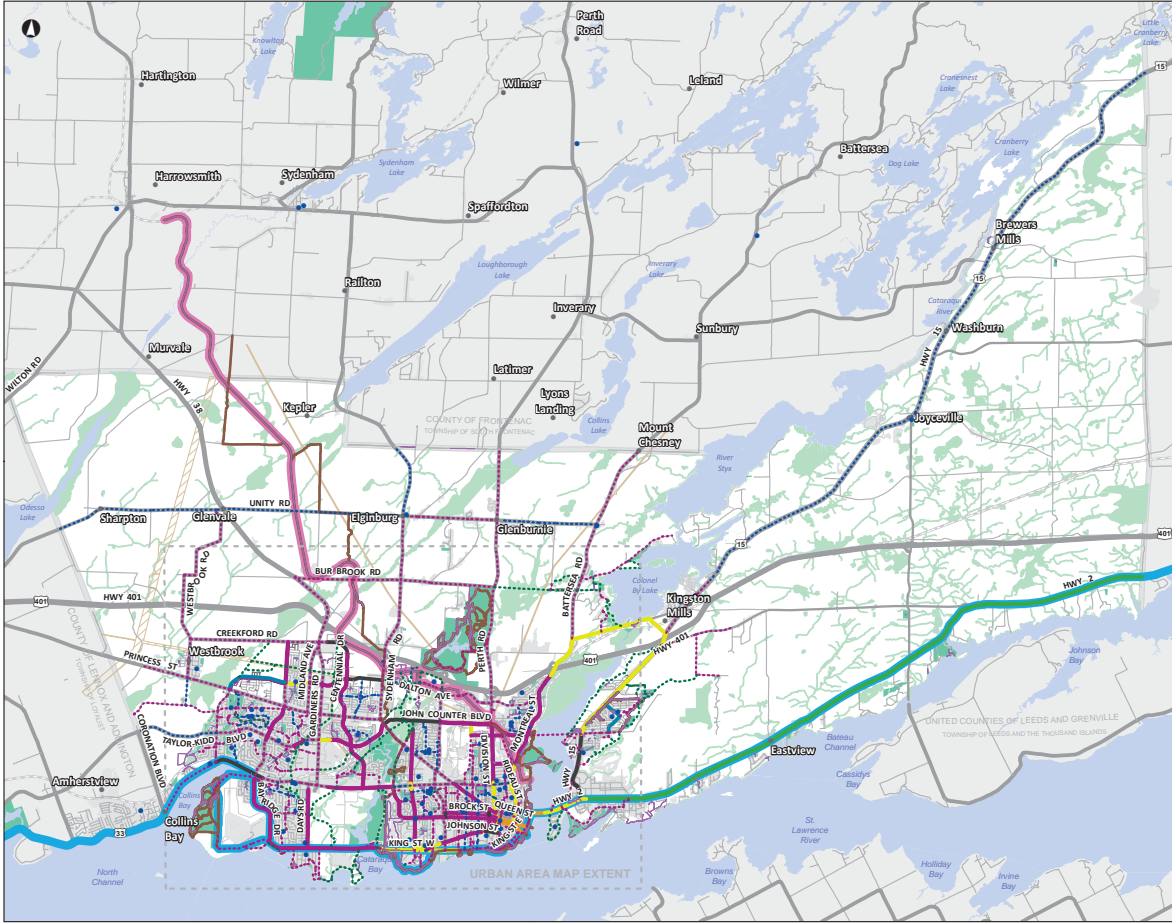
## Facility Types

The following are four groups of facilities that will be considered when selecting the appropriate facility type for each route:



Would you like to see Kingston implement more of these facilities?

YES	YES	YES	YES
NO	NO	NO	NO



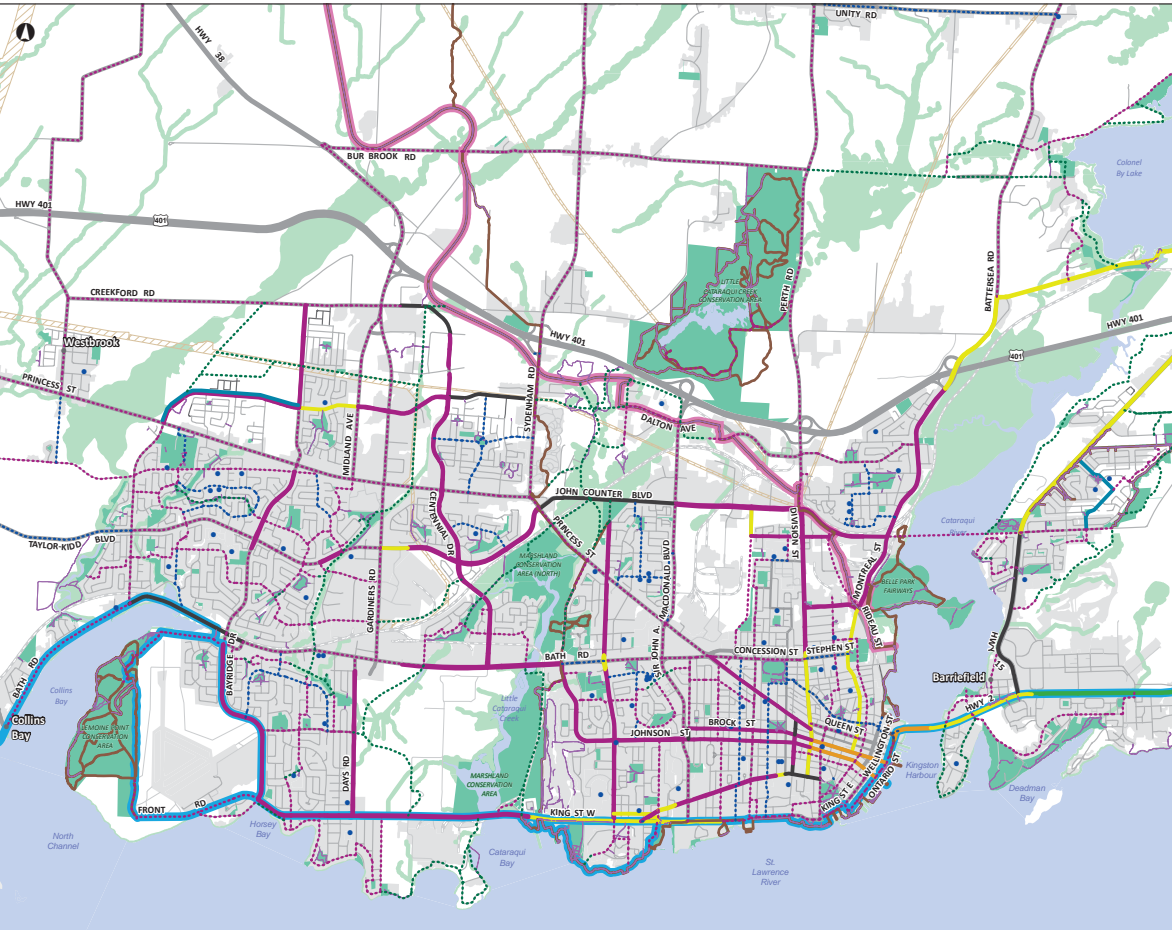
**MAP 3A: EXISTING & CANDIDATE ROUTE ALTERNATIVES - CYCLING & TRAILS (RURAL AREA)**

CITY OF KINGSTON ACTIVE TRANSPORTATION PLAN

Walk 'n' Roll Kingston

- Existing Cycling Network**
  - In-Boulevard Trail
  - Bicycle Lane
  - Paved Shoulder
  - Signed Route with Sharrows
  - Signed Route
  - Planned Facility
- Previously Proposed Cycling Network**
  - On-Road Cycling Network
  - Off-Road Cycling Network
- Cycling Network Gaps**
  - Cycling Network Gap
- Other Facilities**
  - Off-Road Pathway
  - Off-Road Trail
  - K & P Trail
  - Waterfront Trail
- Reference Layers**
  - Municipal Border
  - Built Up Area
  - Park
  - Envir. Protection Area
  - Hydro One Easement
  - Highway / Freeway
  - Arterial Road
  - Collector Road
  - Local Road
  - Service Road / Lane
  - Proposed Road
  - Railway
  - School / University

Data Sources: City of Kingston and Government of Ontario.  
Map Created By: WSP | MMM Thornhill



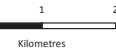
**MAP 3B: EXISTING & CANDIDATE ROUTE ALTERNATIVES - CYCLING & TRAILS (URBAN AREA)**

CITY OF KINGSTON ACTIVE TRANSPORTATION PLAN

Walk 'n' Roll Kingston

- Existing Cycling Network**
  - In-Boulevard Trail
  - Bicycle Lane
  - Paved Shoulder
  - Signed Route with Sharrows
  - Signed Route
  - Planned Facility
- Previously Proposed Cycling Network**
  - On-Road Cycling Network
  - Off-Road Cycling Network
- Cycling Network Gaps**
  - Cycling Network Gap
- Other Facilities**
  - Off-Road Pathway
  - Off-Road Trail
  - K & P Trail
  - Waterfront Trail
- Reference Layers**
  - Municipal Border
  - Built Up Area
  - Park
  - Envir. Protection Area
  - Hydro One Easement
  - Highway / Freeway
  - Arterial Road
  - Collector Road
  - Local Road
  - Service Road / Lane
  - Proposed Road
  - Railway
  - School / University

Data Sources: City of Kingston and Government of Ontario.  
Map Created By: WSP | MMM Thornhill






# We would like your input





The following boards show the Draft Network Concept. When looking at these maps we want you to give us feedback on your experiences and ideas with respect to active transportation and the active transportation network in Kingston. When looking at the map please provide your comments on the following:

1  Use a **red** dot to let us know where you live in Kingston

2  Use a **green** dot to let us know where you work / go to school in Kingston

3  Use a **blue** dot to let us know where you visit most in Kingston

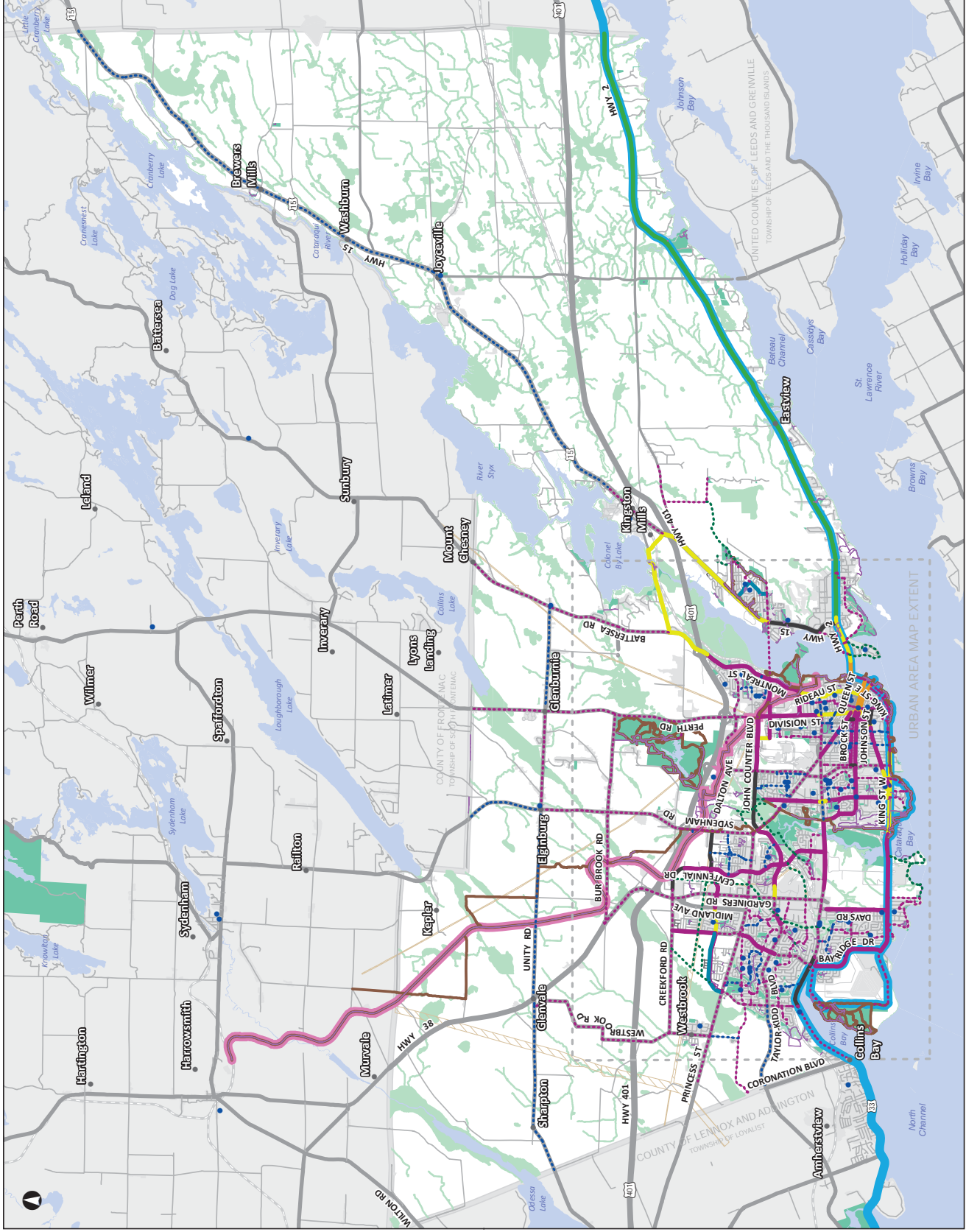
4  Use the provided markers and highlighters to indicated your preferred routes, desire lines, areas of conflict, etc.

5  Use the provided post-it notes to provided additional information or thoughts with regards to the active transportation network in Kingston



If you have any questions about the above activity please let one of the study team members know and they will be happy to help you or answer any of your questions

# Draft Network Concept - Rural



Document Path: J:\01 PROJECTS\2016\160616-16068-001\J0M (Kingston ATMP)\04 Working Files\03 Mapping\MAP 4a- Draft Network Concept - City of Kingston - 20161027.mxd | Date: 10/27/2016 | Time: 1:30:30 PM | User Name: g16v01

## MAP 4A: DRAFT NETWORK CONCEPT - CYCLING & TRAILS (RURAL AREA)

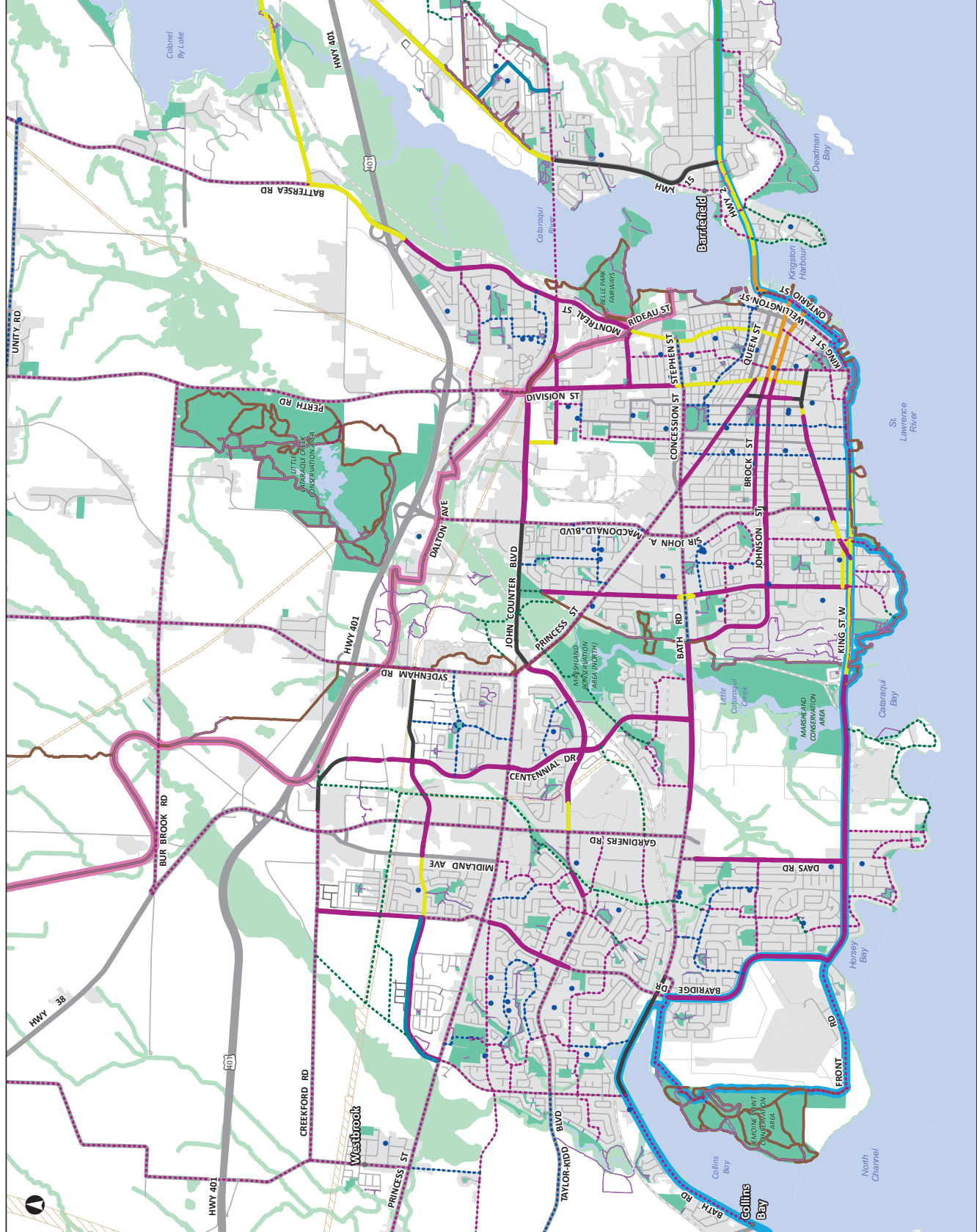
CITY OF KINGSTON ACTIVE TRANSPORTATION PLAN  
Walk 'n' Roll Kingston

- Existing Cycling Network**
- In-Boulevard Trail
  - Bicycle Lane
  - Paved Shoulder
  - Signed Route with Sharrow
  - Signed Route
  - Planned Facility
- Previously Proposed Cycling Network**
- On-Road Cycling Network
  - Off-Road Cycling Network
- Cycling Network Gaps**
- Cycling Network Gap
- Other Facilities**
- Off-Road Pathway
  - Off-Road Trail
  - K & P Trail
  - Waterfront Trail
- Reference Layers**
- Municipal Border
  - Built Up Area
  - Park
  - Envir. Protection Area
  - Hydro One Easement
  - Highway / Freeway
  - Arterial Road
  - Collector Road
  - Local Road
  - Service Road / Lane
  - Proposed Road
  - Railway
  - School / University

Data Sources: City of Kingston and Government of Ontario.  
Map Created By: WSP | MMM Thornhill



# Draft Network Concept - Urban



**MAP 4B: DRAFT NETWORK CONCEPT - CYCLING & TRAILS (URBAN AREA)**

CITY OF KINGSTON ACTIVE TRANSPORTATION PLAN

Walk 'n' Roll Kingston

- Existing Cycling Network**
- In-Boulevard Trail
  - Bicycle Lane
  - Paved Shoulder
  - Signed Route with Sharrow
  - Signed Route
  - Planned Facility
- Previously Proposed Cycling Network**
- On-Road Cycling Network
  - Off-Road Cycling Network
  - Cycling Network Gaps
  - Cycling Network Gap
- Other Facilities**
- Off-Road Pathway
  - Off-Road Trail
  - K & P Trail
  - Waterfront Trail
  - Municipal Border
  - Built Up Area
  - Park
  - Envir. Protection Area
  - Hydro One Easement
  - Highway / Freeway
  - Arterial Road
  - Collector Road
  - Local Road
  - Service Road / Lane
  - Proposed Road
  - Railway
  - School / University

Data Sources: City of Kingston and Government of Ontario.  
Map Created By: WSP | MMM Thomhill

0 1 2  
Kilometres





# THANK YOU FOR COMING



## What are the next steps?



Review and summarize the input received today



Create active transportation vision for the plan and develop supporting policies



Refine & confirm the Network Concept through field investigations



Identify the preferred facility types by route segment

## Staying in touch...



[www.cityofkingston.ca/walkroll](http://www.cityofkingston.ca/walkroll)



Take the online survey



Send an email to [walkroll@cityofkingston.ca](mailto:walkroll@cityofkingston.ca)



Look for Public Open House #2 in Spring 2017

