

New Lookout

- Natural clearing of tree canopy
- Excellent elevated views across the river
- See Trail Details for more information

Woodland Trails

- 2m wide with hard packed granular surface follows the existing slopes through the mixed hardwood forest and down to river
- Trail routes use the location and structure of existing trees and slopes to determine the trail route
- Utilizes existing informal trail routes

New Trail Entry Point

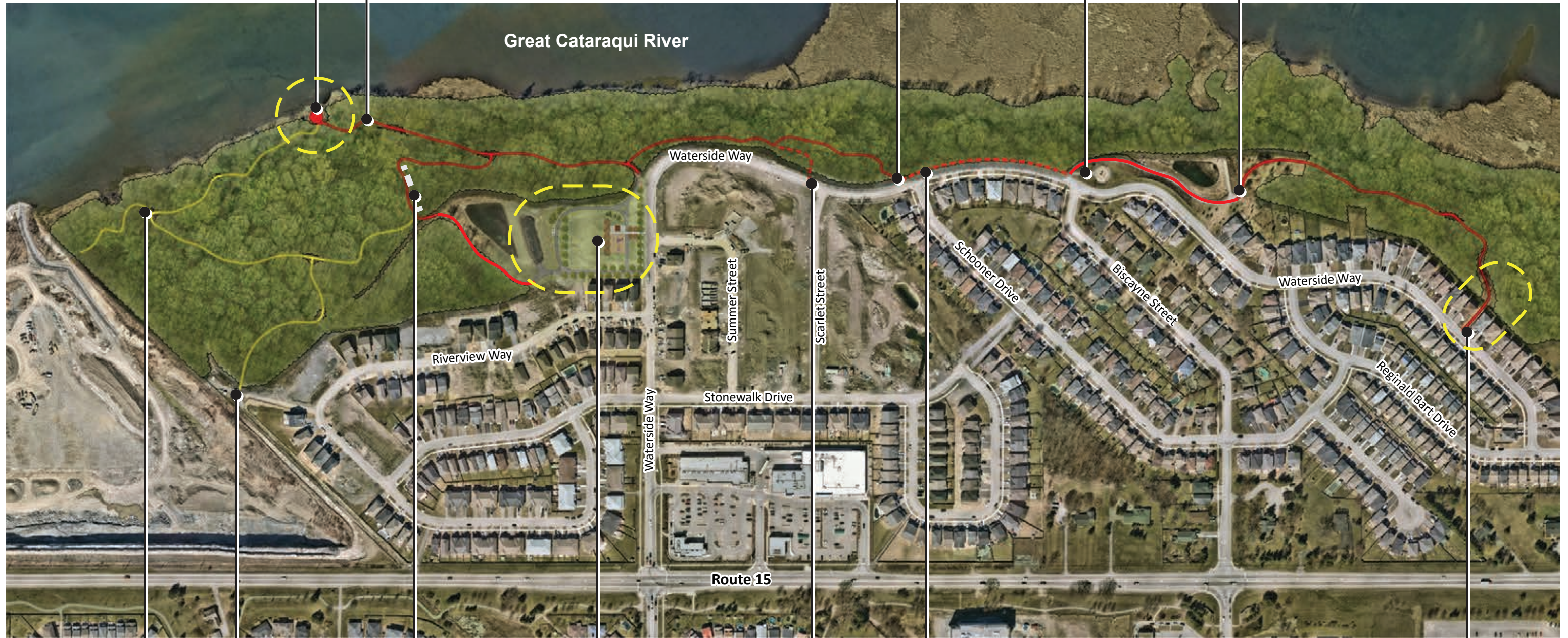
- Trail connects to Waterside Way for access at Schooner Drive
- Level landing at road with sloping grades into woodland
- Selectively remove vegetation to provide sloped trail connection and add fill to reduce slopes where necessary

Greenwood Park and Asphalt Path

- Path follows park and links to storm pond maintenance route

Trail Extension Point

- Located at end of asphalt path
- Add fill and naturalization plantings
- New trail to be established through existing woodland



Future Trail Connections to the South

- Existing Stone Fence**
- Excellent historical and cultural value
 - Trail follows fence line to provide access and improve interpretive value

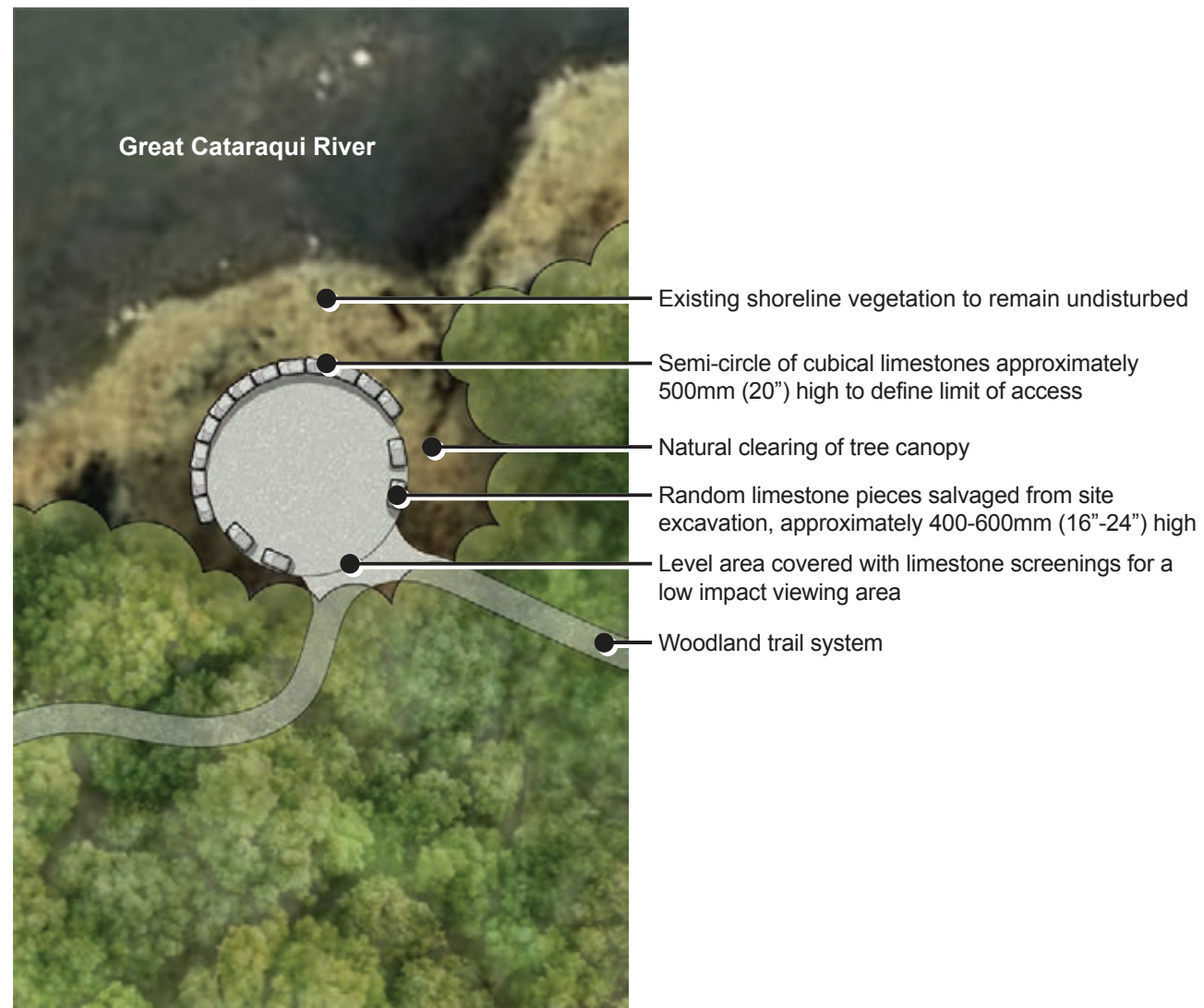
- New Park Location**
- See Park Concept Plans for more information

- Possible Trail Entry Point**
- Potential trail link at Scarlet Street
 - Path must traverse steep slope south for access and woodland viability
 - Practicality of this connection to be studied further

- Future Boulevard Trail Connection**
- New asphalt path on west side of Waterside Way boulevard between Schooner Drive and Greenwood Park
 - Facilitates continuous trail route along west side of Waterside Way

- New Trail Entry Point**
- Steep grass slope
 - See Trail Details for more information

Waterside Lookout



North Trail Entrance Options

Option 1: Sloped Pathway



Option 2: Stairs and Pathway



North Trail Entrance Options

- Existing condition is a steep grass slope
- Option 1 would be a sloped walkway with fill between homes and into the woodland to achieve a 11% slope
- Option 2 would be an integrated stair system and walkway over existing grade with minimal fill or woodland removal

Trails Precedent Imagery



Existing Waterside Lookout Area



Existing Stone Fence Heritage Feature



Woodland Trail Surface Treatment



Existing Asphalt Trail Connection for North Trail



Maintain Existing Woodlot Edge

Existing Drainage Swale
 • Vegetate disturbed area and provide naturalized plantings to provide visual buffer

Existing Storm Pond

Viewing Area
 • Flat paved area with benches viewing over storm water pond and existing woodland

Open Lawn Play Field
 • Flat open turf grass area suitable for informal play activities

Evergreen Plantings
 • Coniferous trees and naturalized plantings to provide a visual buffer

Storm Water Maintenance Route
 • Maintenance route for storm water pond also serves as a park pathway

Woodland Trail Entry Area
 • See Trail Plan for notes

Shade Trees

Basketball Key

Future Sidewalk
 (by developer)

Bench on Concrete Pad

Park Entrance
 • Hard surfaced pathway with park sign

Proposed Playground
 • Junior and senior play equipment including a swingset, a deck and slide structure, and a low climb structure, shade trees and benches

Internal Park Pathway
 • Asphalt surfaced pathway circling playground area and linking to sidewalk and trail





Maintain Existing Woodlot Edge

Existing Drainage Swale
 • Vegetate disturbed area and provide naturalized plantings to provide visual buffer

Evergreen Plantings
 • Coniferous trees and naturalized plantings to provide a visual buffer

Viewing Area
 • Flat paved area with benches viewing over storm water pond and existing woodland

Existing Storm Pond

Open Lawn Play Field
 • Flat open turf grass area suitable for informal play activities

Storm Water Maintenance Route
 • Maintenance route for storm water pond also serves as a park pathway

Woodland Trail Entry Area
 • See Trail Plan for notes

Future Sidewalk
 (by developer)

Shade Trees

Evergreen Trees

Shade Structure with Table Below

Park Entrance
 • Hard surfaced pathway with park sign

Bench on Concrete Pad

Proposed Playground
 • Junior and senior play equipment including a swingset and a deck and slide structure, shade trees and benches

Internal Park Pathway
 • Asphalt surfaced pathway circling playground area and linking to sidewalk and trail



Park Layout - Concept A



Concept A Playground Plan



Basketball Key

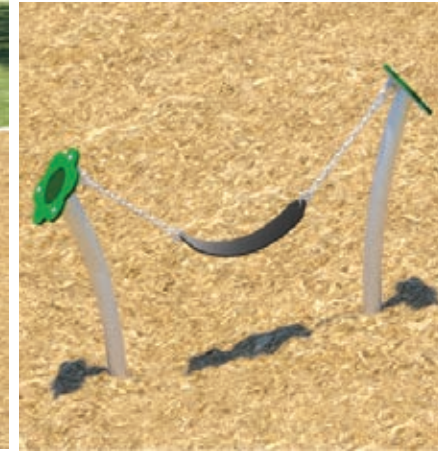
Playground Equipment - Option 1



Deck and Slide Play Structure



Low Climbing Structures

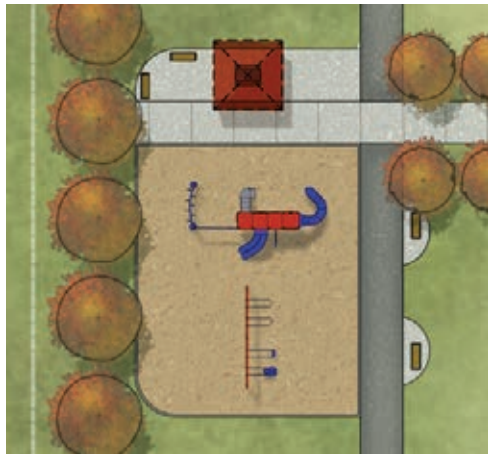


Swing Seat



Swing Set

Park Layout - Concept B



Concept B Playground Plan



Shade Structure

Playground Equipment - Option 2



Deck and Slide Play Structure



Deck and Slide Play Structure and Swing Set

Park Characteristics Imagery



Asphalt Pathways in Waterside Way Park



Naturalized Vegetation Buffers



Open Lawn Play Area



Bench Seating