

Rotary Park Improvement Plans



Rotary Park Improvement Layout Plan



Front View of Proposed Boat House Building



Inside View of Proposed Boat House Building

Existing Trees Proposed to be Removed

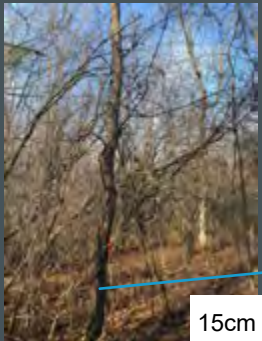


1 - cherry trees at building



3 - cherry trees at building

1 - cherry trees at parking lot



Approximately 20 dead
ash trees and trunks
proposed to be removed



Approximately 300 sqm
of invasive buckthorn
understory proposed to
be removed

Existing trees close to project work to be protected

30cm cedar at parking lot



40 cm DBH sugar maple tree



Multi-stem cedar at parking lot



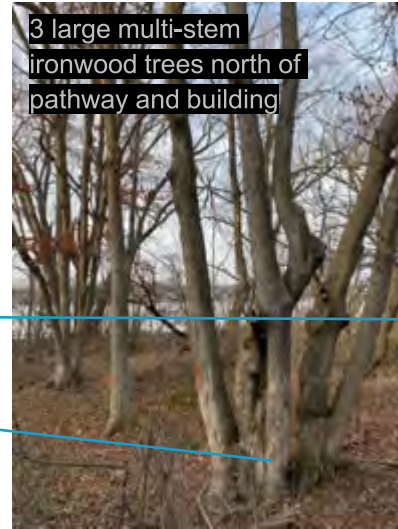
30cm DBH Pine tree at parking lot



60 DBH Pine tree near driveway



3 large multi-stem ironwood trees north of pathway and building



40cm DBH sugar maple



25cm DBH ironwood tree south of pathway



50cm DBH cherry tree southwest of building

