



# Kingston Zoning By-law

## Schedule 2 - Parking Areas

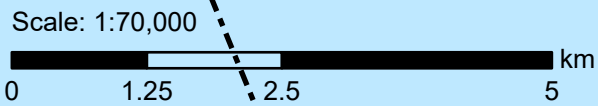
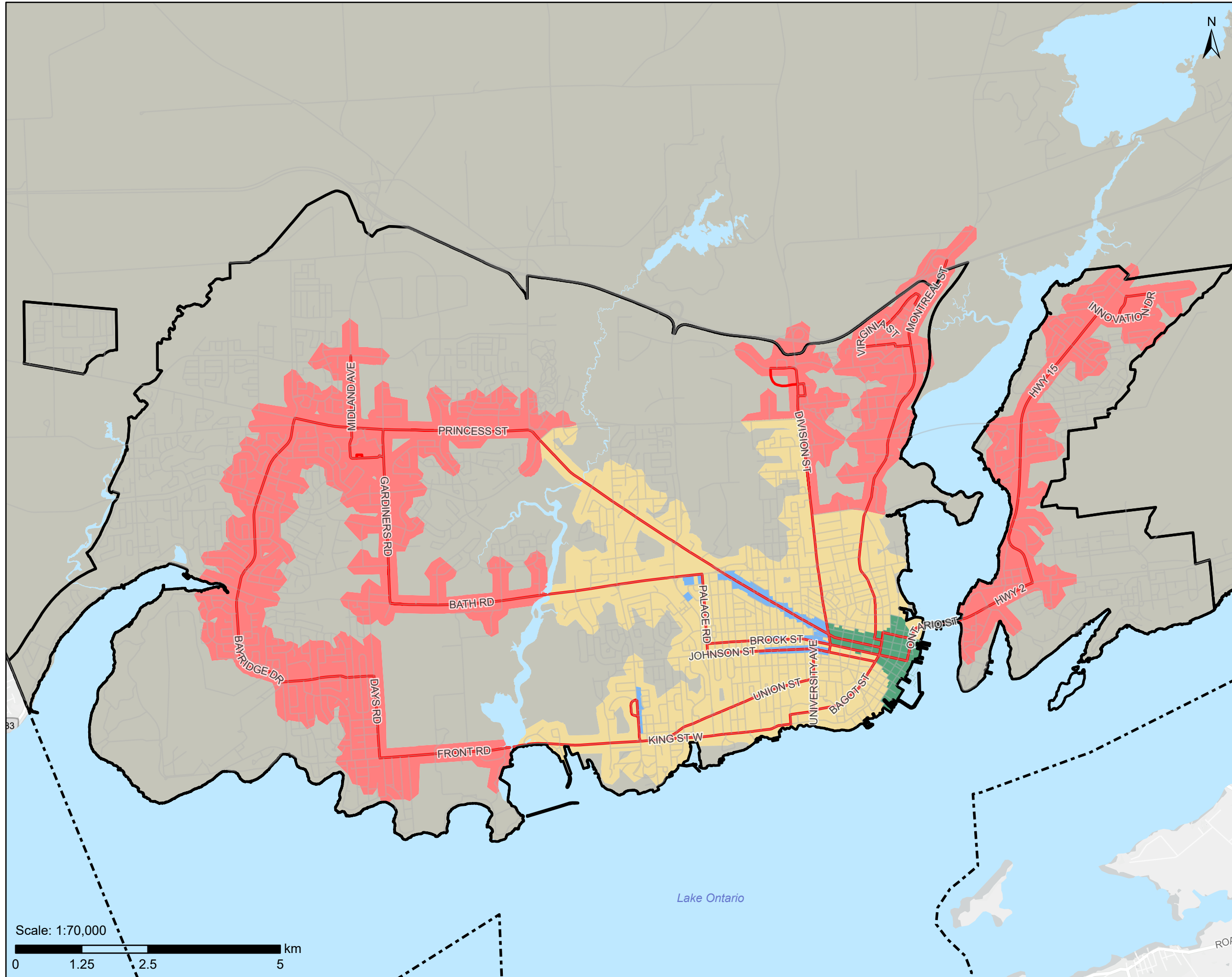
### Schedule 2 - Parking Areas

— Kingston Transit Express Route

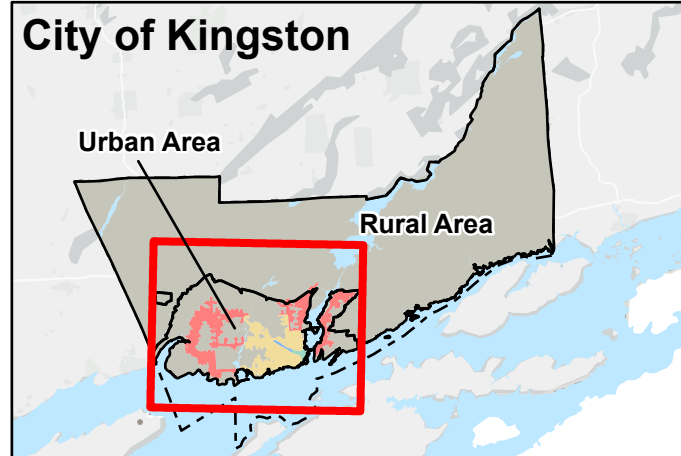
### Parking Area

- Parking Area 1
- Parking Area 2
- Parking Area 3
- Parking Area 4
- Parking Area 5

Lands that are identified as "Not Subject to this By-law" on Schedule 1 – Zoning Map are not subject to this Schedule.



### Key Map



The Corporation of the City of Kingston assumes no responsibility for inaccurate or inconsistent data set out in this map product. The City does not accept any responsibility for reliance thereon. The City does not make any representations or warranty, express or implied, in relation to the website including without limitations, as to the quality, merchantability and fitness for any use. Further, the City does not accept any responsibility for the accuracy of this information, nor is it responsible for any expenses or damages incurred, directly or indirectly, resulting from the use of this information.



# Kingston Zoning By-law

## Schedule 3 - Required Ground Floor Commercial

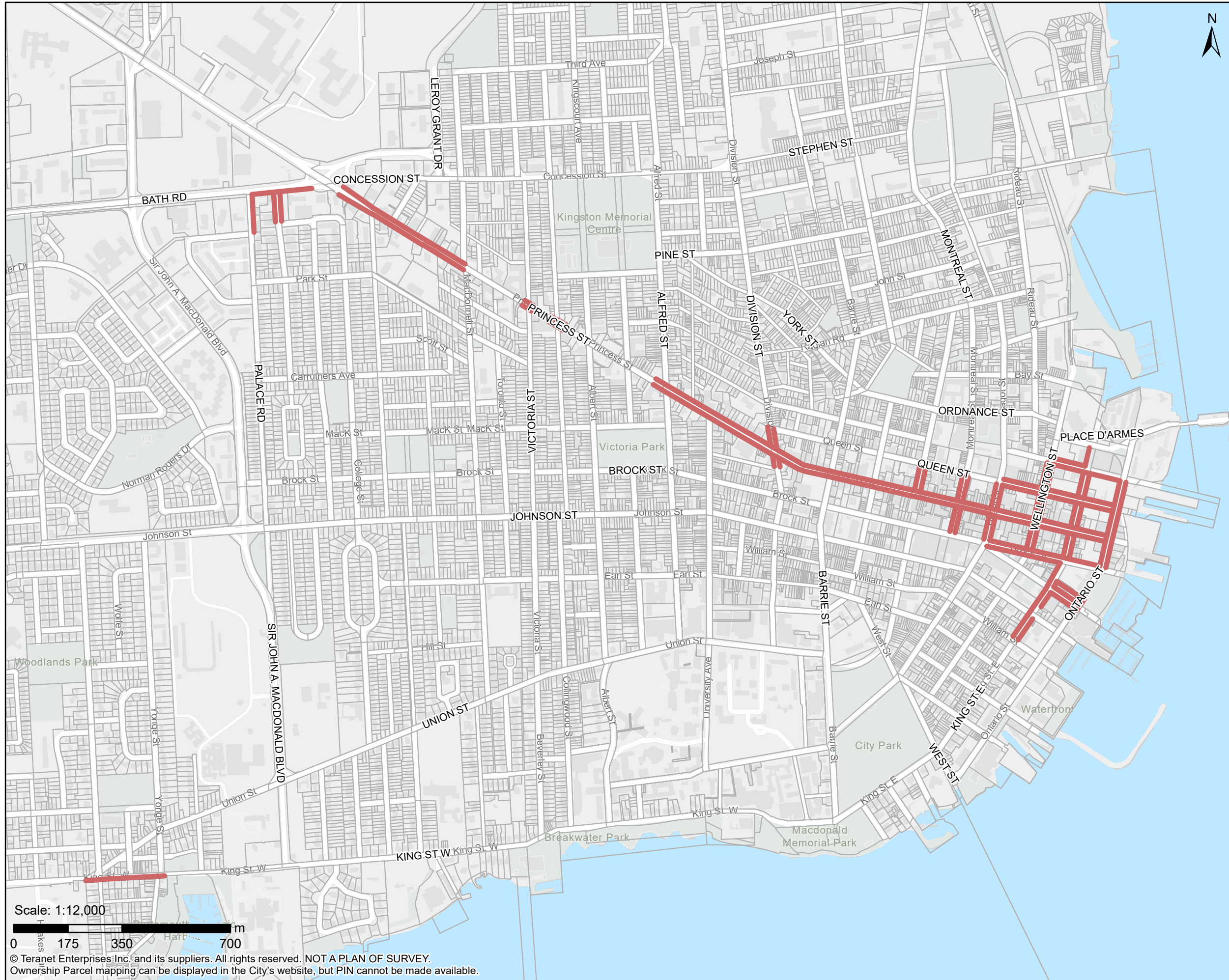
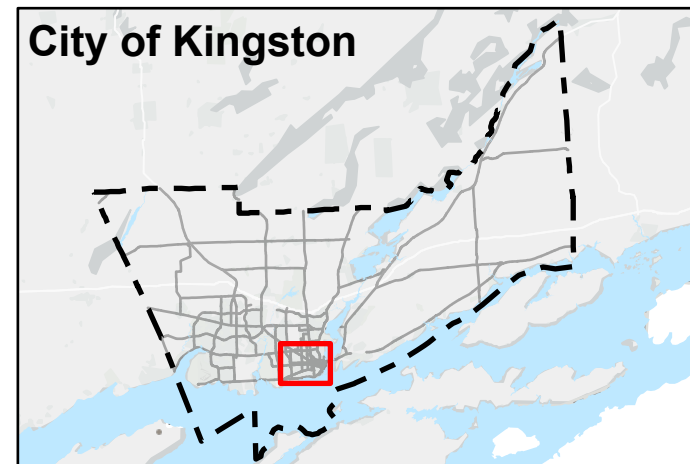
### Schedule 3 - Required Ground Floor Commercial

Required Ground Floor Commercial

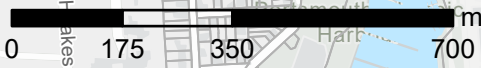
Lands that are identified as "Not Subject to this By-law" on Schedule 1 – Zoning Map are not subject to this Schedule.

### Key Map

#### City of Kingston



Scale: 1:12,000



© Teranet Enterprises Inc. and its suppliers. All rights reserved. NOT A PLAN OF SURVEY. Ownership Parcel mapping can be displayed in the City's website, but PIN cannot be made available.



# Kingston Zoning By-law

## Schedule 4 - Road Classification - Rural

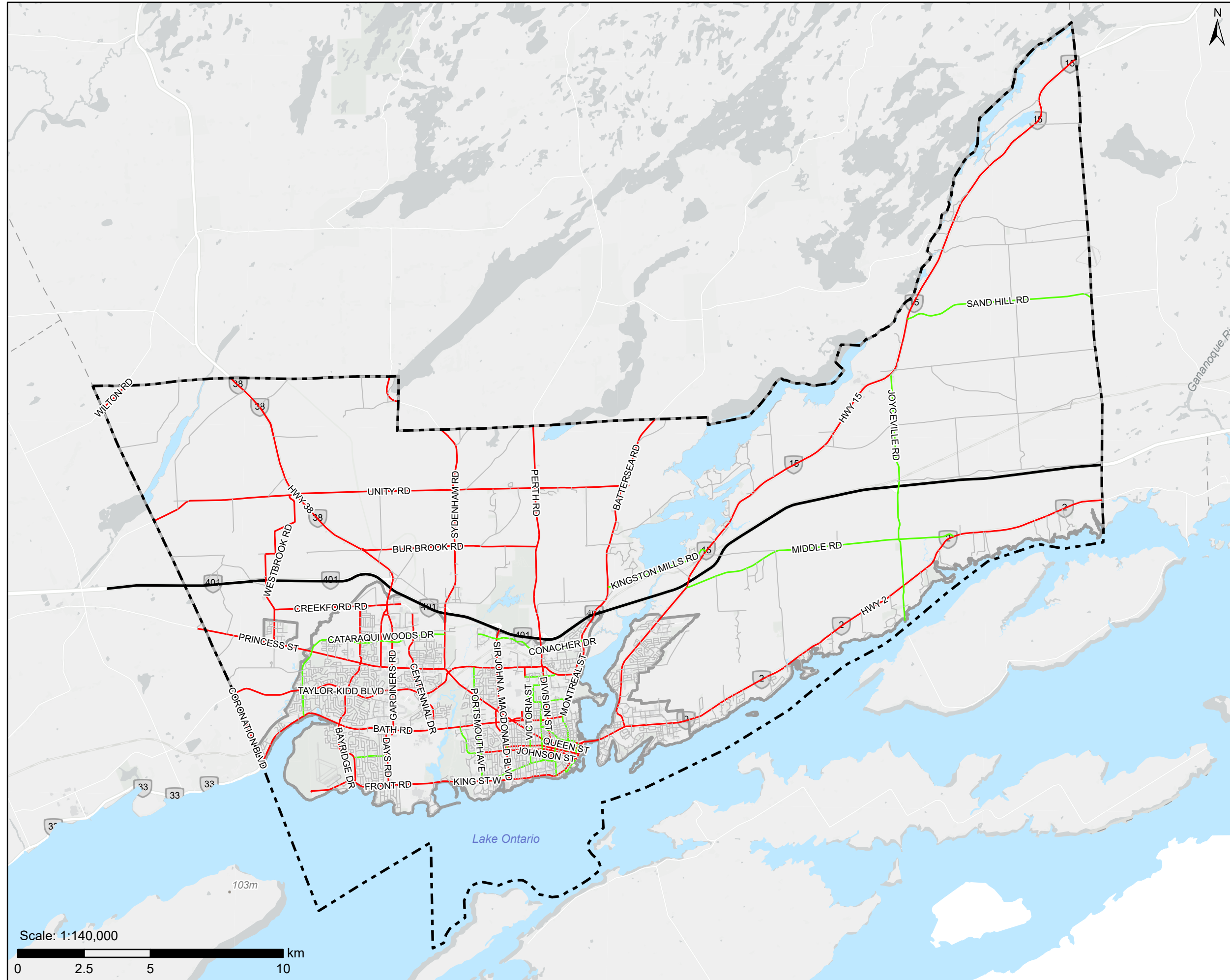
### Schedule 4 - Road Classification

City of Kingston Boundary

#### Road Classification

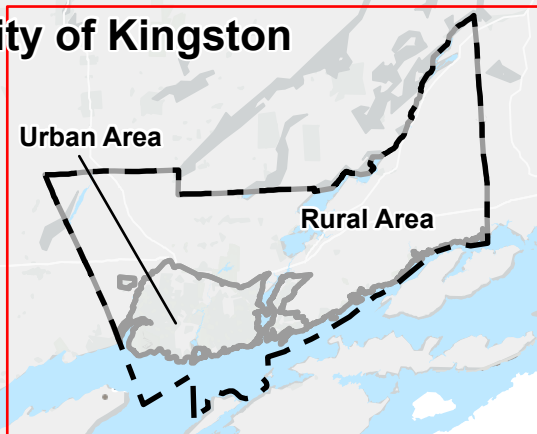
- Freeway
- Arterial Road
- Collector Road
- Local Road

Lands that are identified as "Not Subject to this By-law" on Schedule 1 – Zoning Map are not subject to this Schedule.



### Key Map

#### City of Kingston



The Corporation of the City of Kingston assumes no responsibility for inaccurate or inconsistent data set out in this map product. The City does not accept any responsibility for reliance thereon. The City does not make any representations or warranty, express or implied, in relation to the website including without limitations, as to the quality, merchantability and fitness for any use. Further, the City does not accept any responsibility for the accuracy of this information, nor is it responsible for any expenses or damages incurred, directly or indirectly, resulting from the use of this information.



# Kingston Zoning By-law

## Schedule 4 - Road Classification - Urban

### Schedule 4 - Road Classification

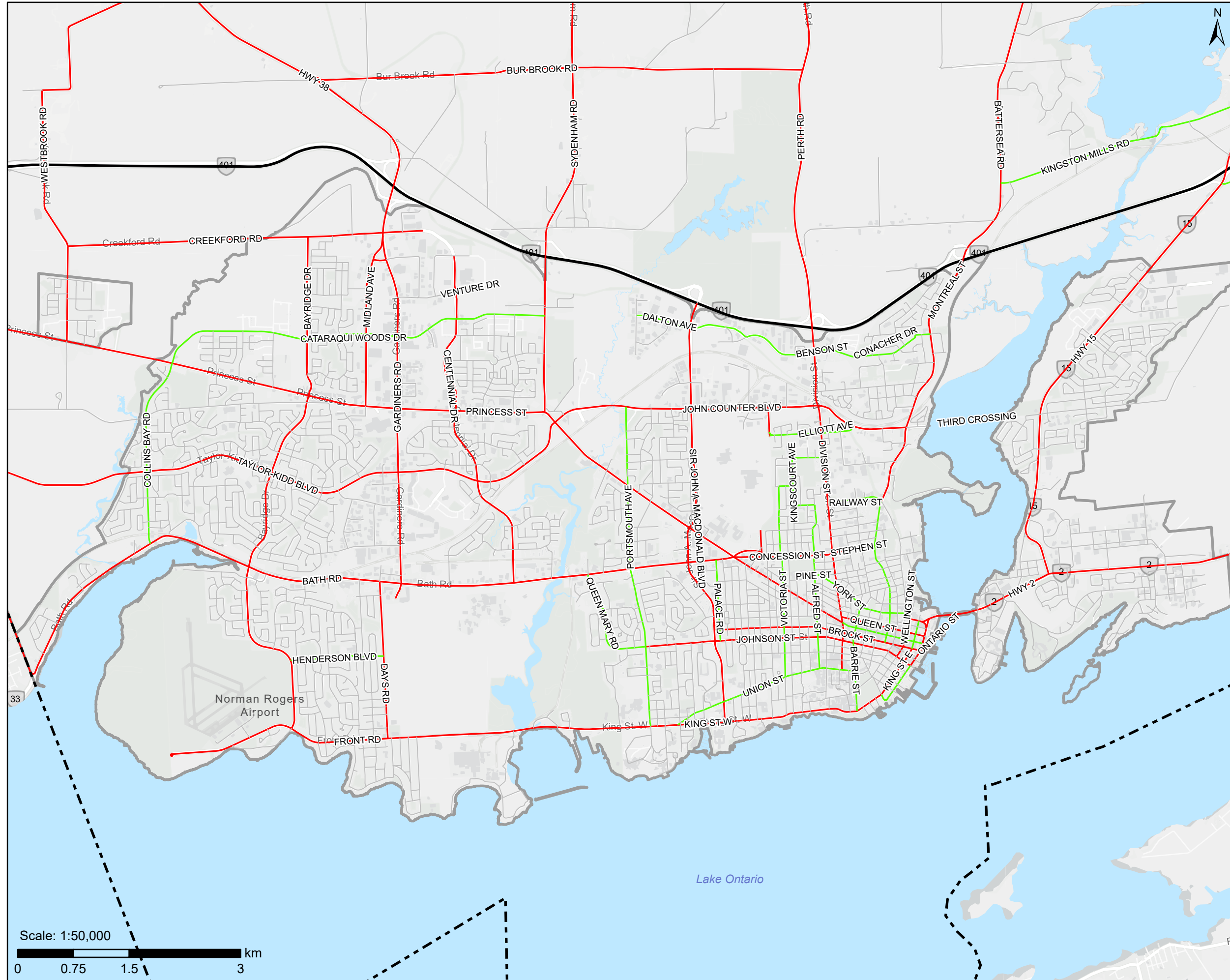
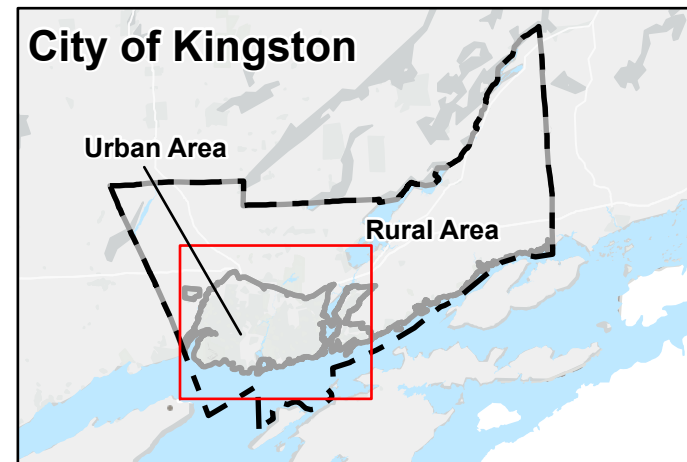
City of Kingston Boundary

#### Road Classification

- Freeway
- Arterial Road
- Collector Road
- Local Road

Lands that are identified as "Not Subject to this By-law" on Schedule 1 – Zoning Map are not subject to this Schedule.

### Key Map



The Corporation of the City of Kingston assumes no responsibility for inaccurate or inconsistent data set out in this map product. The City does not accept any responsibility for reliance thereon. The City does not make any representations or warranty, express or implied, in relation to the website including without limitations, as to the quality, merchantability and fitness for any use. Further, the City does not accept any responsibility for the accuracy of this information, nor is it responsible for any expenses or damages incurred, directly or indirectly, resulting from the use of this information.