


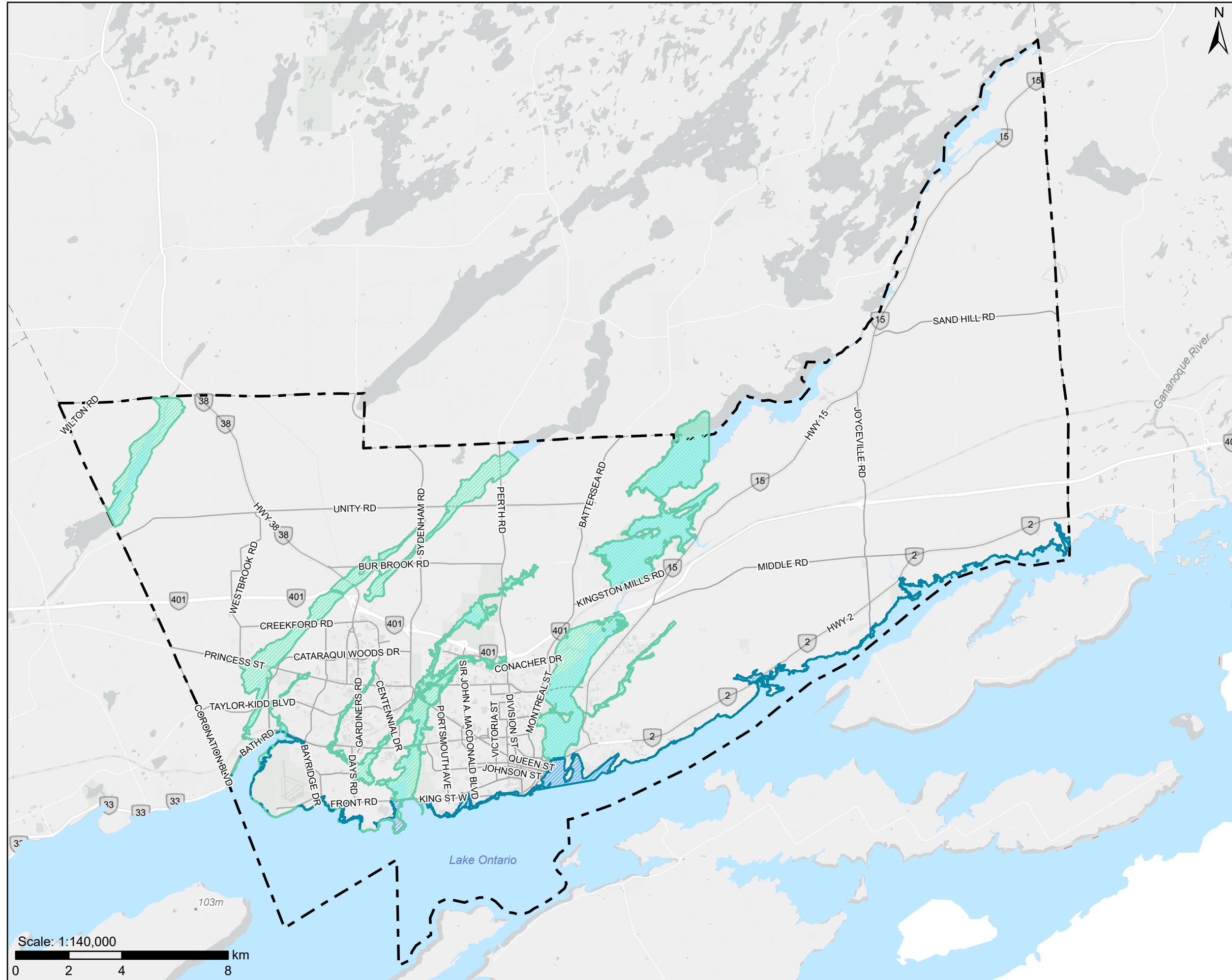




Kingston Zoning By-law

Schedule A - Floodplain Overlay

-  City of Kingston Boundary
- Schedule A - Floodplain Overlay**
-  Floodplain
-  Wave Uprush



Lands that are identified as "Not Subject to this By-law" on Schedule 1 – Zoning Map are not subject to this Schedule.

The Corporation of the City of Kingston assumes no responsibility for inaccurate or inconsistent data set out in this map product. The City does not accept any responsibility for reliance thereon. The City does not make any representations or warranty, express or implied, in relation to the website including without limitations, as to the quality, merchantability and fitness for any use. Further, the City does not accept any responsibility for the accuracy of this information, nor is it responsible for any expenses or damages incurred, directly or indirectly, resulting from the use of this information.



Kingston Zoning By-law

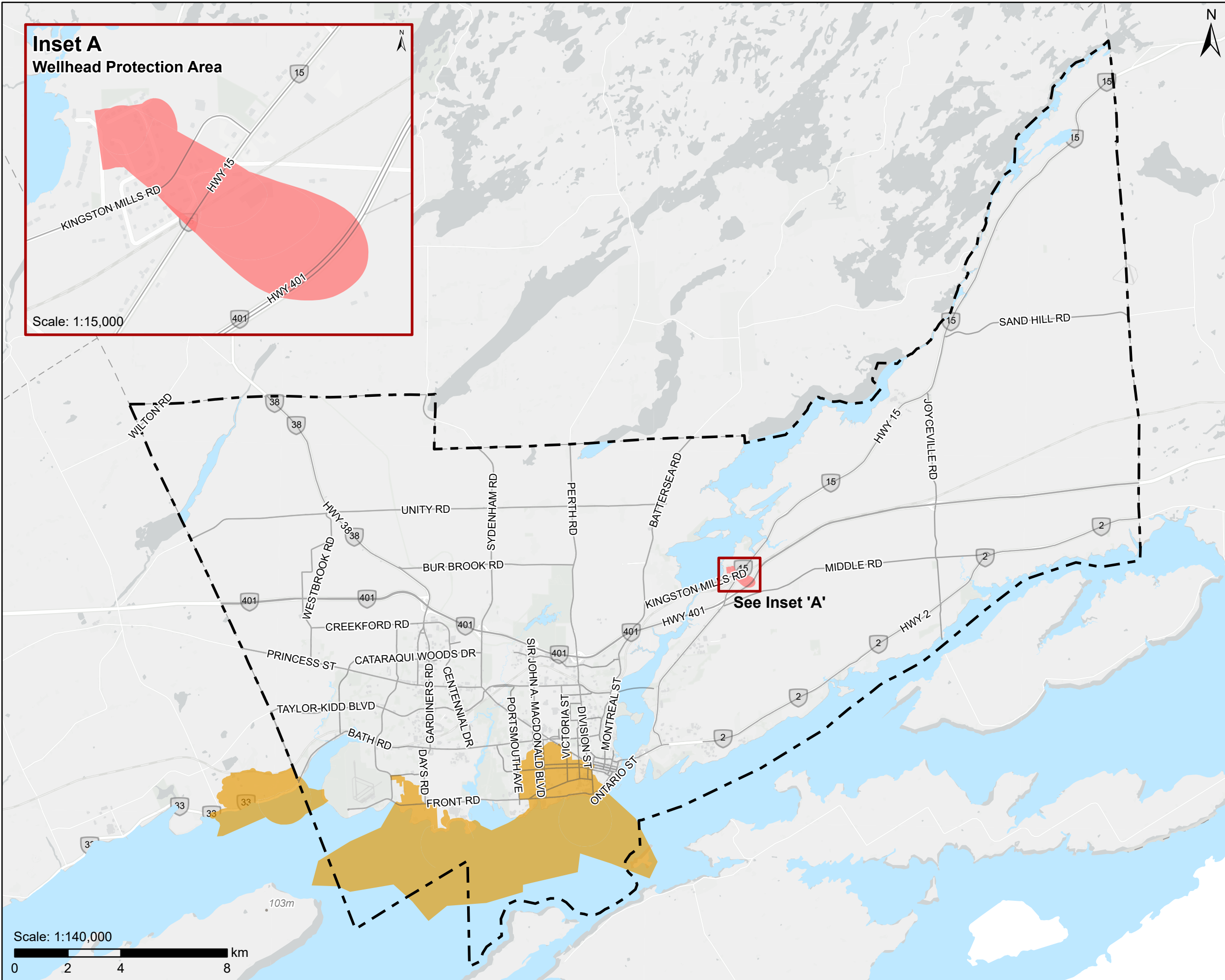
Schedule B - Source Water Protection Overlay

City of Kingston Boundary

Schedule B - Source Water Protection Overlay

- Wellhead Protection Area
- Intake Protection Zone

Lands that are identified as "Not Subject to this By-law" on Schedule 1 – Zoning Map are not subject to this Schedule.



The Corporation of the City of Kingston assumes no responsibility for inaccurate or inconsistent data set out in this map product. The City does not accept any responsibility for reliance thereon. The City does not make any representations or warranty, express or implied, in relation to the website including without limitations, as to the quality, merchantability and fitness for any use. Further, the City does not accept any responsibility for the accuracy of this information, nor is it responsible for any expenses or damages incurred, directly or indirectly, resulting from the use of this information.



Kingston Zoning By-law

Schedule C - Airport Noise Exposure Overlay

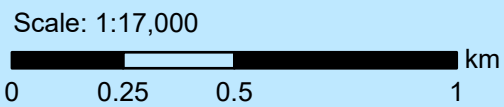
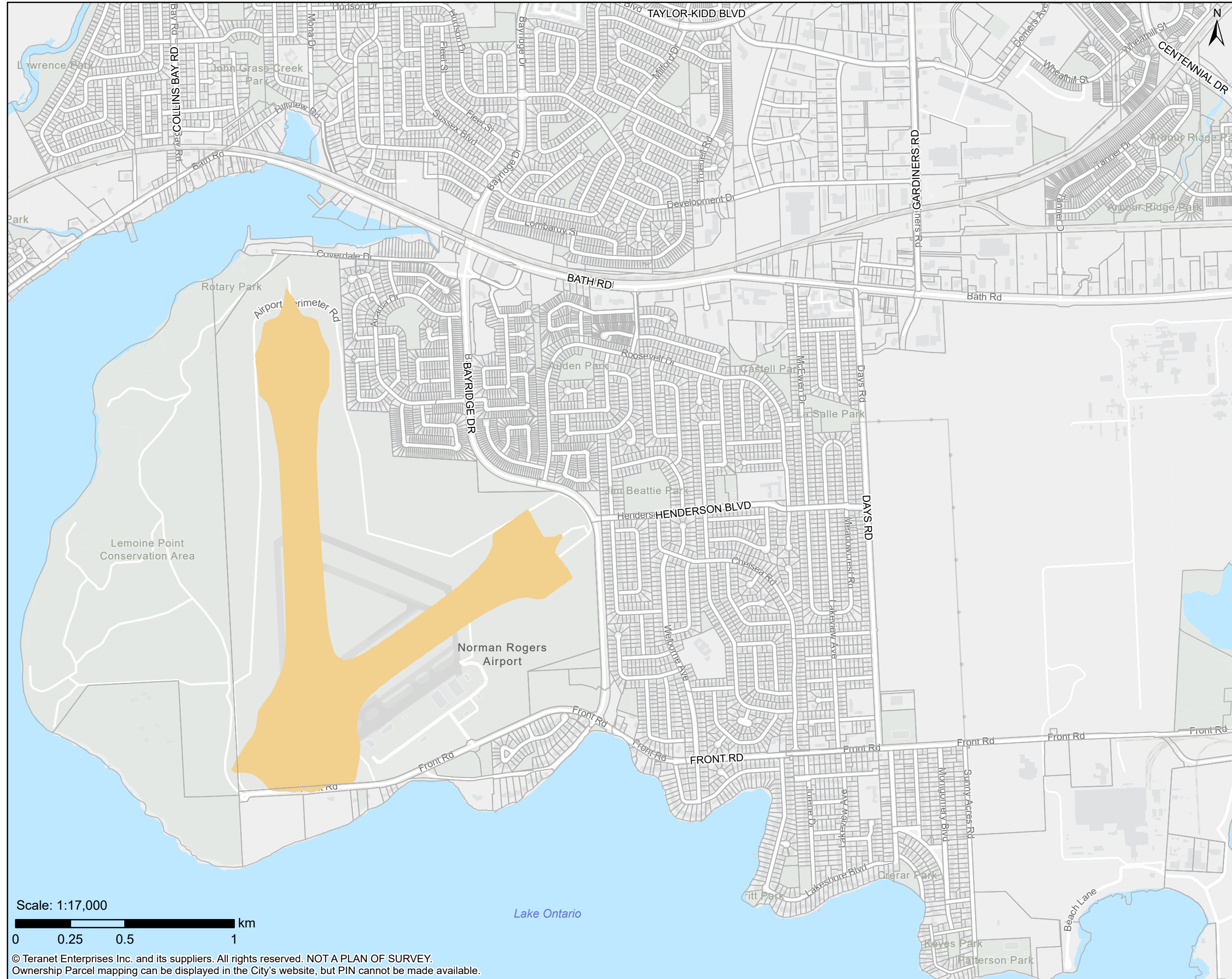
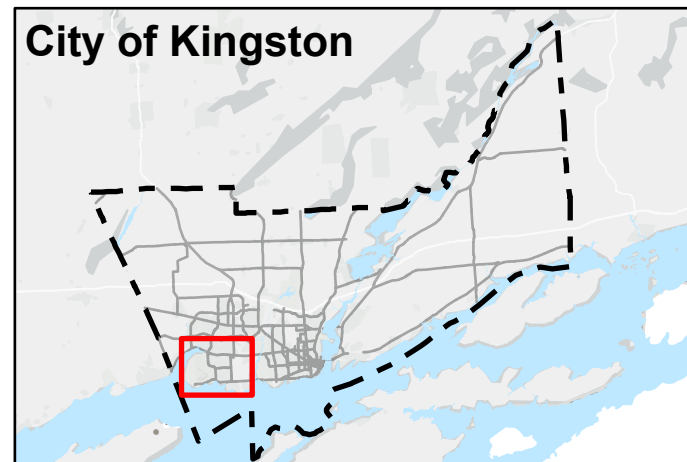
Schedule C - Airport Noise Exposure Overlay

NEF 30

Lands that are identified as "Not Subject to this By-law" on
Schedule 1 – Zoning Map are not subject to this Schedule.

Key Map

City of Kingston



© Teranet Enterprises Inc. and its suppliers. All rights reserved. NOT A PLAN OF SURVEY.
Ownership Parcel mapping can be displayed in the City's website, but PIN cannot be made available.

The Corporation of the City of Kingston assumes no responsibility for inaccurate or inconsistent data set out in this map product. The City does not accept any responsibility for reliance thereon. The City does not make any representations or warranty, express or implied, in relation to the website including without limitations, as to the quality, merchantability and fitness for any use. Further, the City does not accept any responsibility for the accuracy of this information, nor is it responsible for any expenses or damages incurred, directly or indirectly, resulting from the use of this information.



Kingston Zoning By-law

Schedule D - Additional Residential Unit Overlay

Schedule D - Additional Residential Unit Overlay

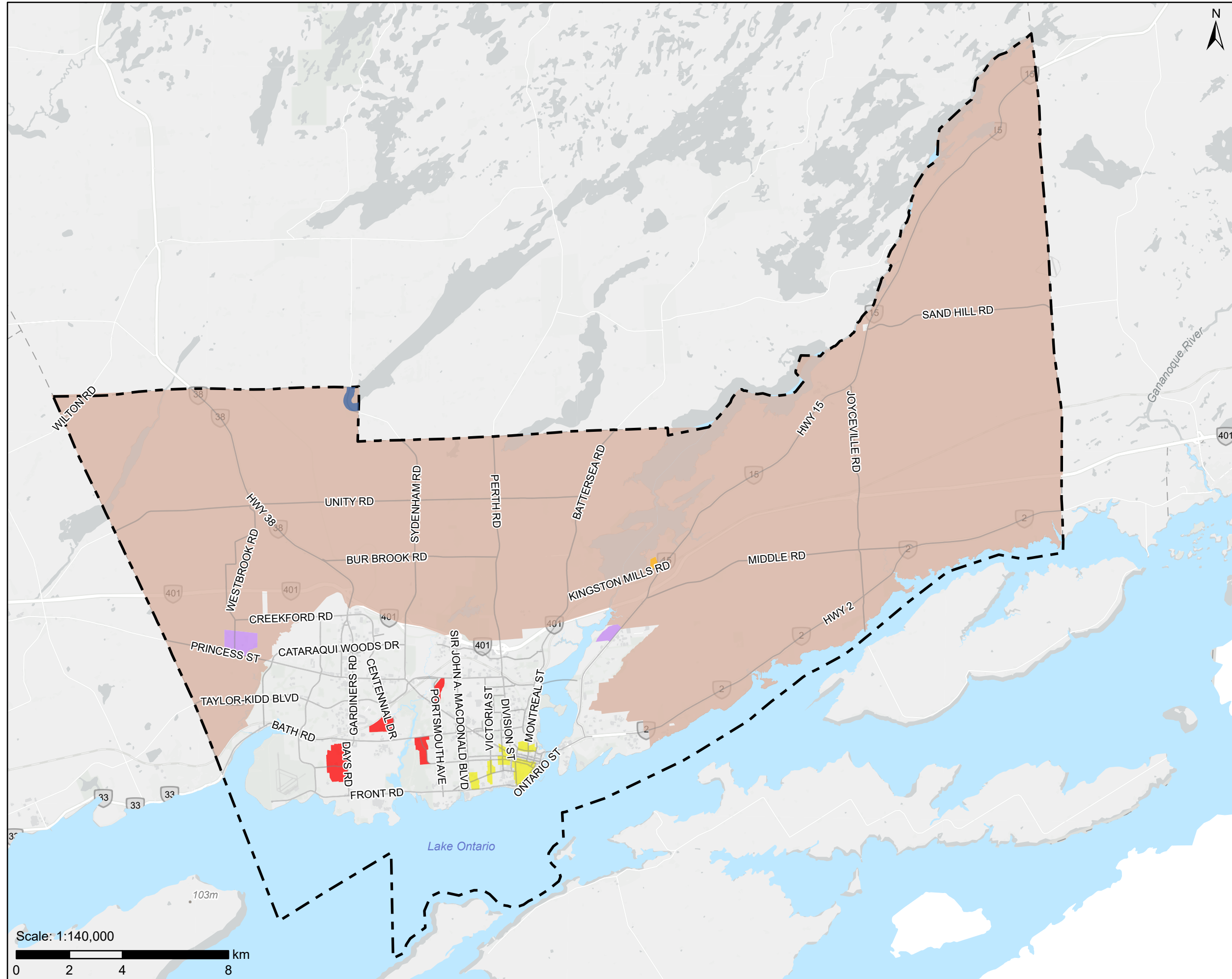
City of Kingston Boundary

Constraint Area (Not Subject to Holding Symbol)

- Sewer Surcharging
- Sewer Surcharging (Combined Storm and Sewer Systems)
- Sewer Capacity Limitations
- Loughborough Lake (At-Capacity Lake)

Constraint Area (Subject to Holding Symbol)

- Water Supply/Water Quality
- Servicing Capacity (Cana Subdivision)



Lands that are identified as "Not Subject to this By-law" on Schedule 1 – Zoning Map are not subject to this Schedule.