



Hwy 15 & Gore Rd. intersection **final design**

Overview

In September 2019, the **Third Crossing project team** provided a draft concept design of **Hwy 15 & Gore Rd intersection** based upon preliminary work on the **Highway 15 Class EA**. Since then, there have been City-wide decisions based on global and municipal interests which have influenced the final design.

These are:

1. City of Kingston Council approves a Climate emergency declaration
2. Council strategic priorities for transportation which means a greater focus on:
 - Sustainable transportation system for active transportation for cyclists, pedestrians and other multi-modal users
 - Support for transit service and ridership growth
 - Considerations for express transit service and ridership growth

As a result, the final design improvements for **Hwy 15 & Gore Rd intersection** prioritizes:





- safety for pedestrians and cyclists by focusing on active transportation and future connectivity
- focuses on transit infrastructure by creating opportunities for enhanced transit service
- improves connectivity for multi-modal uses
- expanding transit and improved alternatives for active transportation movement at the intersection

The Highway 15 Class EA

This engagement is not about the **Hwy 15 Class Environmental Assessment (Class EA)** that looked at the current and future transportation needs of pedestrians, cyclists, transit users, and motorists. For information about the **Hwy 15 road corridor**, visit the Highway 15 project page at **[CityofKingston.ca/city-hall/projects-construction/highway-15/updates](https://www.cityofkingston.ca/city-hall/projects-construction/highway-15/updates)**

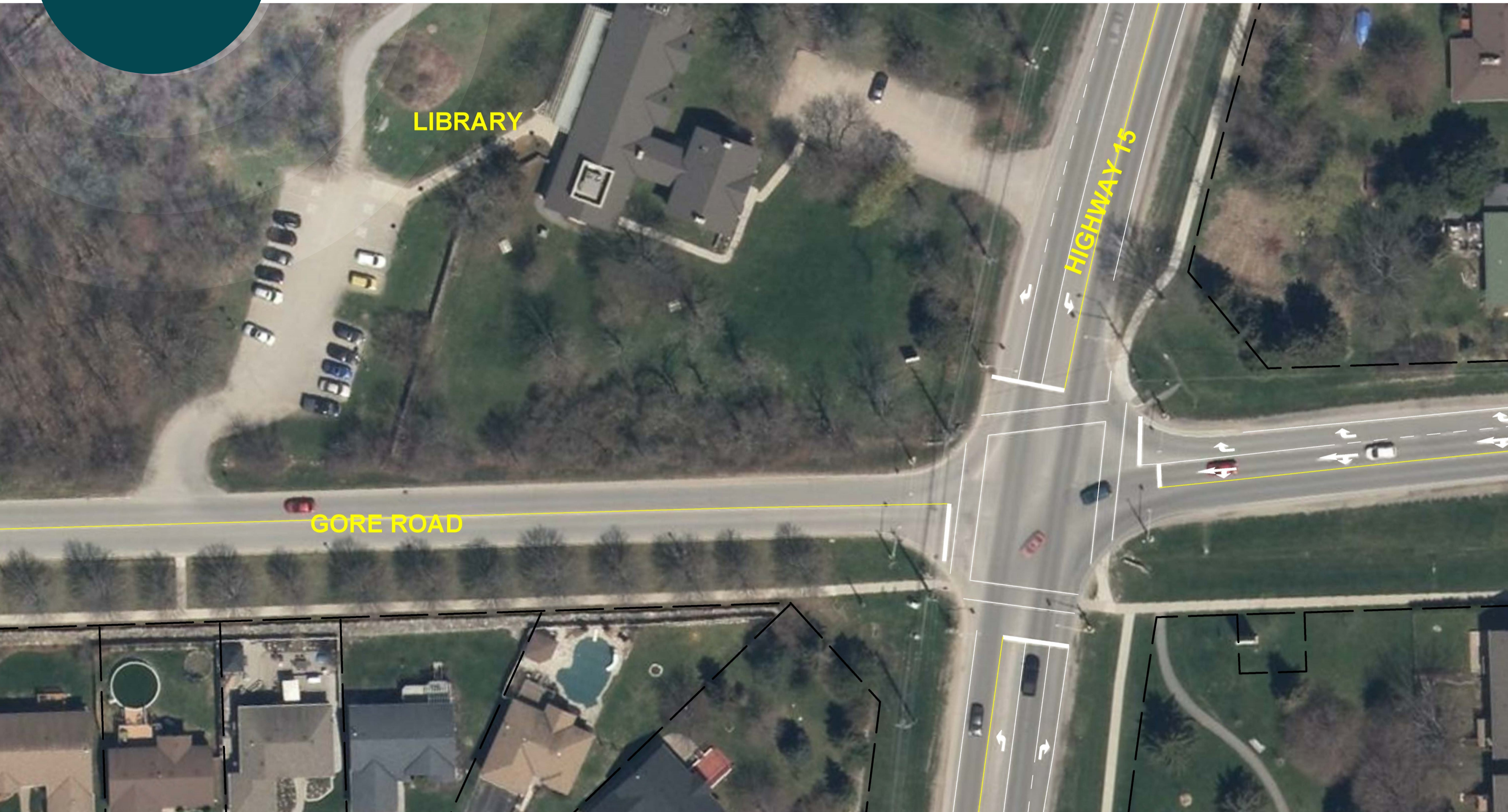


Design changes to Hwy 15 and Gore Rd intersection design

Feature	Existing Intersection	Draft Concept Sept 2019	Final Design June 2020
 Pedestrians			
Crosswalks, sidewalks and multi-use pathways	<p>Sidewalks are located on one side of roadways only.</p> <p>Crosswalks are provided at the intersection with limited pedestrian refuge area at corners.</p> <p>No multi-use pathways.</p>	<p>Sidewalks are located on one side of roadways only.</p> <p>Crosswalk are provided with improved pedestrian refuge area at corners.</p> <p>Multi-use pathway is added on Gore Rd.</p>	<p>Sidewalks/pedestrian facilities at all four corners with improved connectivity to existing facilities</p> <p>Crosswalks are provided with improved pedestrian refuge area.</p> <p>Multi-use pathway is added on Gore Rd.</p> <p>Added multi-use pathway at Hwy 15 intersection which allows for future extension.</p>
 Cyclists			
Bike lane, cycle track and cross ride	<p>No cycling infrastructure is provided.</p>	<p>On-road bike lanes are only on Gore Rd.</p> <p>No cross rides are provided for cyclists at intersection.</p>	<p>Off-road cycling facilities added to make it easier and safer for cyclists to move through the intersection and make left turns. This includes cross rides across each leg of the intersection for improved cycling safety.</p> <p>Multi-use pathway is added on Gore Rd., which provides off-road cycling facility across bridge.</p> <p>Added multi-use pathway at Hwy 15 intersection which allows for future extension</p>
 Transit			
Bus, bus stop	<p>Partial transit infrastructure provided on Hwy 15.</p> <p>No bus stops provided at the intersection.</p>	<p>Partial transit infrastructure provided on Hwy 15.</p> <p>Bus stops are added at the intersection in all directions.</p>	<p>Transit queue-hopping infrastructure is provided through the intersection in all directions.</p> <p>Bus stops are provided in all directions for future service.</p>
 Motor vehicles			
Road ways	<p>Single through lane is provided for vehicles in all directions.</p> <p>Dedicated and/or shared turning lanes with exception of Gore Rd west of the intersection.</p>	<p>Road widened to provide two through lanes for vehicles in both directions on Hwy 15.</p> <p>Double northbound left turn lane on Hwy 15.</p> <p>Dedicated turn lanes provided in all directions.</p>	<p>Single through lanes for vehicles in all directions.</p> <p>Dedicated and/or shared turning lanes provided in all directions.</p> <p>Enhanced cycling, pedestrian and transit infrastructure to help support sustainable transportation goals</p>



Existing Hwy 15 & Gore Rd. intersection



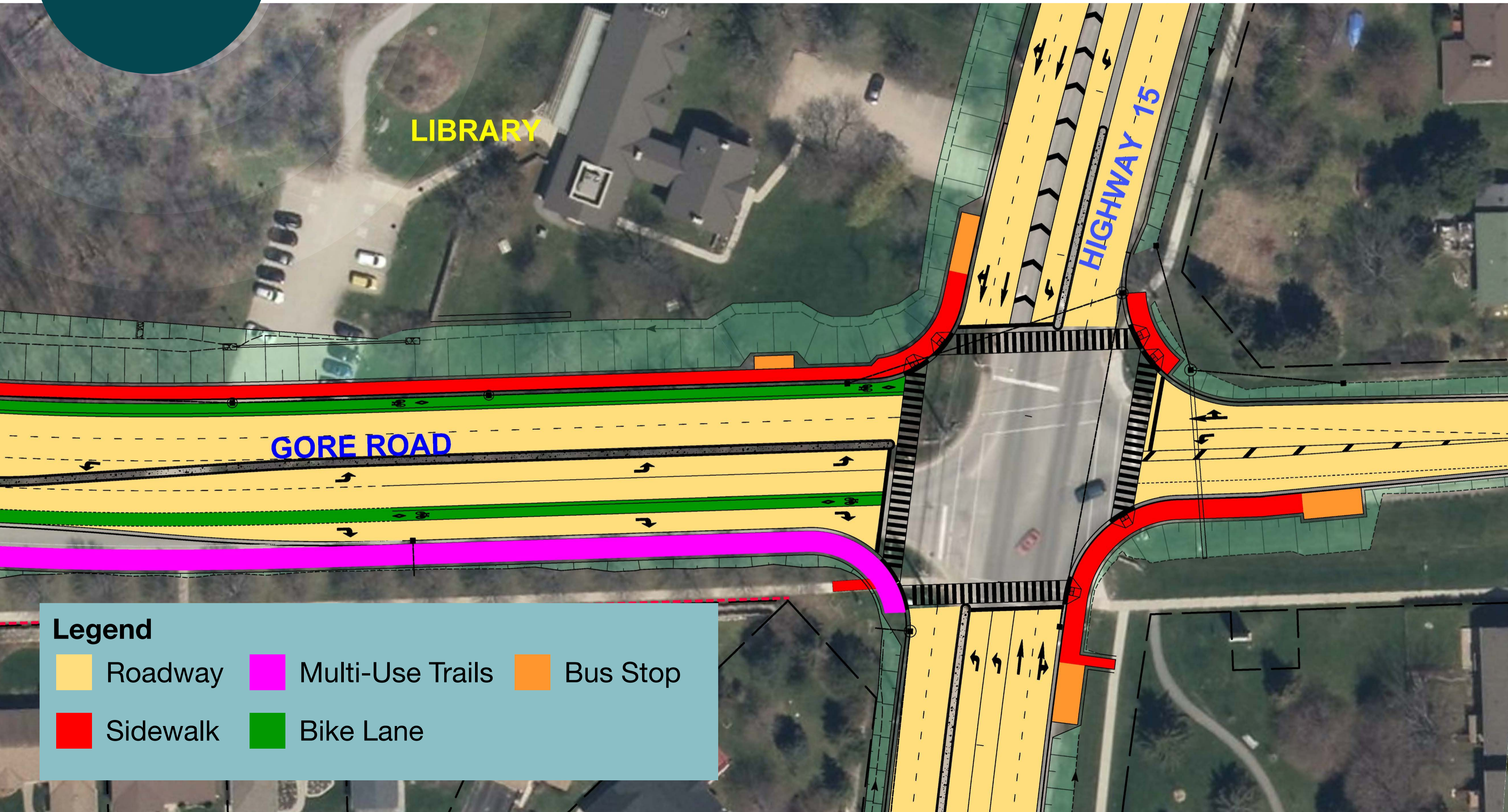
LIBRARY

GORE ROAD

HIGHWAY 15



Draft concept - September 2019

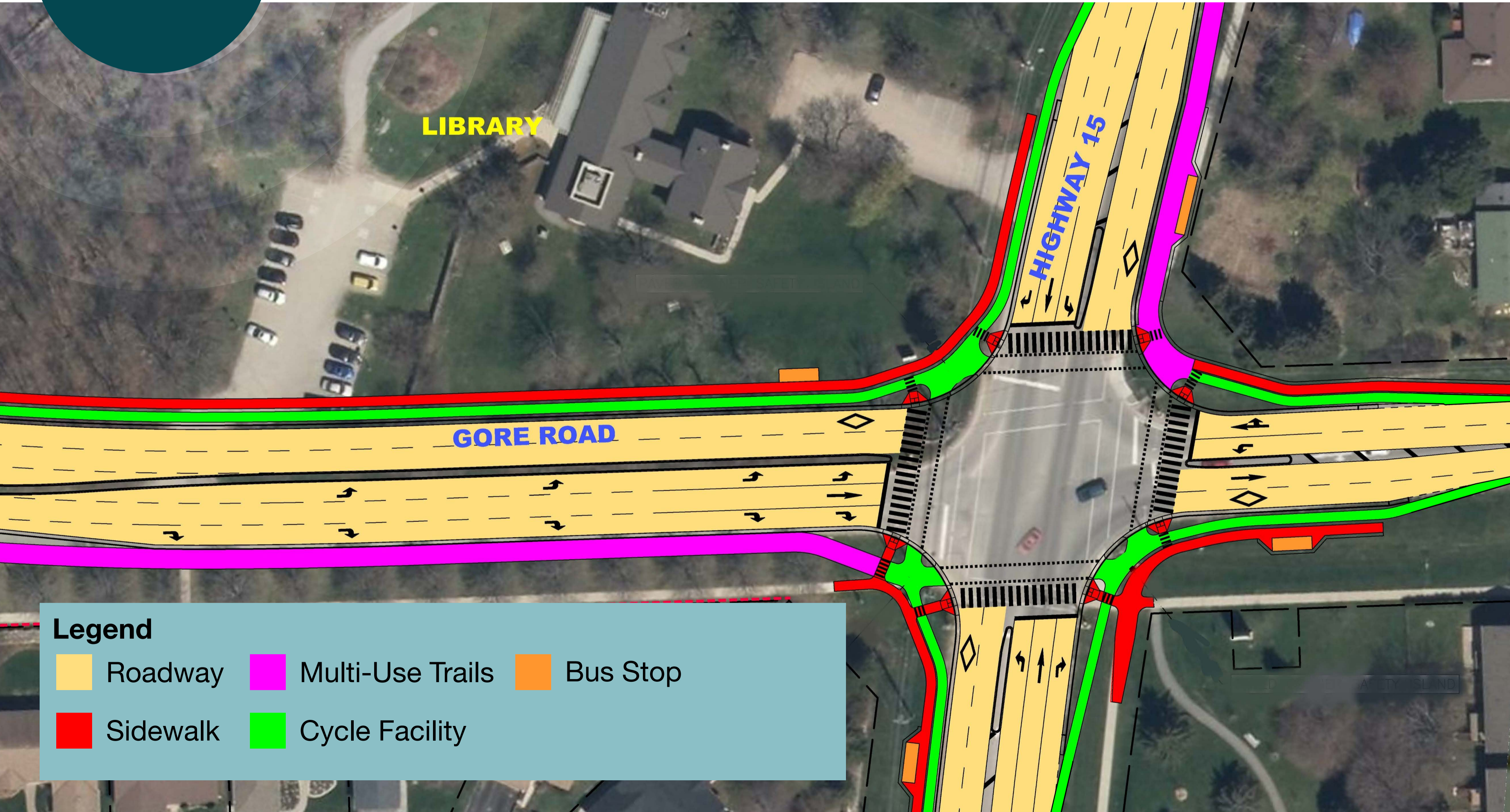


Legend

- | | | |
|--|--|--|
|  Roadway |  Multi-Use Trails |  Bus Stop |
|  Sidewalk |  Bike Lane | |



Final design - June 2020



LIBRARY

HIGHWAY 15

GORE ROAD

Legend

 Roadway	 Multi-Use Trails	 Bus Stop
 Sidewalk	 Cycle Facility	



The users view of the **roadway** and **active transportation**

Gore Road West



Legend

- Roadway
- Sidewalk
- Multi-Use Trails
- Cycle Facility
- Bus Stop

Highway 15

